



## Standard Specification for Castings, Nickel and Nickel Alloy<sup>1</sup>

This standard is issued under the fixed designation A 494/A 494M; the number immediately following the designation indicates the year of original adoption or, in the case of revision, the year of last revision. A number in parentheses indicates the year of last reapproval. A superscript epsilon ( $\epsilon$ ) indicates an editorial change since the last revision or reapproval.

*This standard has been approved for use by agencies of the Department of Defense.*

### 1. Scope \*

1.1 This specification covers nickel, nickel-copper, nickel-copper-silicon, nickel-molybdenum, nickel-chromium, and nickel-molybdenum-chromium alloy castings for corrosion-resistant service.

1.2 The values stated in either inch-pound units or SI units are to be regarded separately as standard. Within the text, the SI units are shown in brackets. The values stated in each system are not exact equivalents; therefore, each system must be used independently of the other. Combining values from the two systems may result in nonconformance with the specification. Inch-pound units are applicable for material ordered to Specification A 494 and SI units for material ordered to Specification A 494M.

### 2. Referenced Documents

#### 2.1 ASTM Standards:

A 370 Test Methods and Definitions for Mechanical Testing of Steel Products<sup>2</sup>

A 488/A488M Practice for Steel Castings, Welding, Qualifications of Procedures and Personnel<sup>3</sup>

A 732/A732M Specification for Castings, Investment, Carbon and Low-Alloy Steel for General Application, and Cobalt Alloy for High Strength at Elevated Temperatures<sup>3</sup>

A 781/A781M Specification for Castings, Steel and Alloy, Common Requirements, for General Industrial Use<sup>3</sup>

E 8 Test Methods for Tension Testing of Metallic Materials<sup>4</sup>

E 29 Practice for Using Significant Digits in Test Data to Determine Conformance with Specifications<sup>5</sup>

E 30 Test Methods for Chemical Analysis of Steel, Cast Iron, Open-Hearth Iron, and Wrought Iron<sup>6</sup>

E 38 Methods for Chemical Analysis of Nickel-Chromium and Nickel-Chromium-Iron Alloys<sup>7</sup>

<sup>1</sup> This specification is under the jurisdiction of ASTM Committee A01 on Steel, Stainless Steel, and Related Alloys and is the direct responsibility of Subcommittee A01.18 on Castings.

Current edition approved Sept. 10, 2001. Published November 2001. Originally published as B 332 – 58 T. Redesignated as A 494 in 1963. Last previous edition A 494/A 494M – 01.

<sup>2</sup> Annual Book of ASTM Standards, Vol 01.03.

<sup>3</sup> Annual Book of ASTM Standards, Vol 01.02.

<sup>4</sup> Annual Book of ASTM Standards, Vol 03.01.

<sup>5</sup> Annual Book of ASTM Standards, Vol 14.02.

<sup>6</sup> Annual Book of ASTM Standards, Vol 03.05.

<sup>7</sup> Discontinued, see 1989 Annual Book of ASTM Standards, Vol 03.05.

E 76 Test Methods for Chemical Analysis of Nickel-Copper Alloys<sup>6</sup>

E 354 Test Methods for Chemical Analysis of High-Temperature, Electrical, Magnetic, and Other Similar Iron, Nickel, and Cobalt Alloys<sup>6</sup>

### 3. Terminology

#### 3.1 Definitions:

3.1.1 *master heat*—a single furnace charge of refined alloy which may either be poured directly into castings or into remelt alloy for individual melts.

3.1.2 *melts*—a single furnace charge poured into castings. When master heats are used to prepare melts, a melt analysis shall be reported.

### 4. General Conditions for Delivery

4.1 Material furnished to this specification shall conform to the requirements of Specification A 781/A 781M, including any supplementary requirements that are indicated in the purchase order. Failure to comply with the general requirements of Specification A 781/A 781M constitutes nonconformance with this specification. In case of conflict between the requirements of this specification and Specification A 781/A 781M, this specification shall prevail.

### 5. Ordering Information

5.1 Orders for castings to this specification should include the following information:

5.1.1 Quantity, in pieces, and

5.1.2 Grade designation (Table 1) and class (Table 2).

5.2 The purchaser shall specify any of the following information required to describe adequately the desired material:

5.2.1 Heat treat condition (see 6.1 and 6.2),

5.2.2 Repair welding (see 11)

5.2.3 Source inspection requirements, if any (see Specification A 781/A 781M),

5.2.4 Marking-for-identification requirements, if any (see 13.1), and

5.2.5 Supplementary requirements desired, including the standards of acceptance.

### 6. Heat Treatment

6.1 Castings shall be heat treated in accordance with the requirements in Table 2.

\*A Summary of Changes section appears at the end of this standard.

**TABLE 1 Chemical Requirements**

NOTE 1—Values are maximum unless otherwise indicated.

Element	Composition, %															
	CZ-100	M-35-1 <sup>A</sup>	M-35-2	M-30H	M-25S	M-30C <sup>A</sup>	N-12MV	N-7M	CY-40	CW-12MW	CW-6M	CW-2M	CW-6MC	CY5SnBiM	CX2MW (N26022)	CU5MCuC (N28820)
C, max	1.00	0.35	0.35	0.30	0.25	0.30	0.12	0.07	0.40	0.12	0.07	0.02	0.06	0.05	0.02	0.050 max
Mn, max	1.50	1.50	1.50	1.50	1.50	1.50	1.00	1.00	1.50	1.00	1.00	1.00	1.00	1.5	1.00	1.0 max
Si, max	2.00	1.25	2.00	2.7-3.7	3.5-4.5	1.0-2.0	1.00	1.00	3.00	1.00	1.00	0.80	1.00	0.5	0.80	1.0 max
P, max	0.03	0.03	0.03	0.03	0.03	0.03	0.040	0.040	0.03	0.040	0.040	0.03	0.015	0.03	0.025	0.030 max
S, max	0.03	0.03	0.03	0.03	0.03	0.03	0.030	0.030	0.03	0.030	0.030	0.03	0.015	0.03	0.025	0.030 max
Cu	1.25 max	26.0-33.0	26.0-33.0	27.0-33.0	27.0-33.0	26.0-33.0	...	...	...	...	...	...	...	...	...	1.50-3.50
Mo	...	...	...	...	...	...	26.0-30.0	30.0-33.0	...	16.0-18.0	17.0-20.0	15.0-17.5	8.0-10.0	2.0-3.5	12.5-14.5	2.5-3.5
Fe	3.00 max	3.50 max	3.50 max	3.50 max	3.50 max	3.50 max	4.0-6.0	3.00 max	11.0 max	4.5-7.5	3.0 max	2.0 max	5.0 max	2.0 max	2.0-6.0	balance
Ni	95.00 min	balance	balance	balance	balance	balance	balance	balance	balance	balance	balance	balance	balance	balance	balance	38.0-44.0
Cr	...	...	...	...	...	...	1.00	1.0	14.0-17.0	15.5-17.5	17.0-20.0	15.0-17.5	20.0-23.0	11.0-14.0	20.0-22.5	19.5-23.5
Cb (Nb)	...	0.5 max	0.5 max	...	...	1.0-3.0	...	...	...	...	...	...	3.15-4.50	...	...	0.60-1.20
W	...	...	...	...	...	...	...	...	...	3.75-5.25	...	1.0 max	...	...	2.5-3.5	...
V	...	...	...	...	...	...	0.20-0.60	...	...	0.20-0.40	...	...	...	...	0.35 max	...
Bi	...	...	...	...	...	...	...	...	...	...	...	...	...	3.0-5.0	...	...
Sn	...	...	...	...	...	...	...	...	...	...	...	...	...	3.0-5.0	...	...

<sup>A</sup>Order M-35-1 or M-30C when weldability is required.

**TABLE 2 Heat Treat Requirements**

Grade	Heat Treatment
CZ-100, M-35-1, M-35-2, CY-40 Class 1, M-30H, M-30C, M-25S Class 1, CY5SnBiM M-25S, Class 2 <sup>A</sup>	As cast  Load into furnace at 600°F [315°C] maximum. Heat to 1600°F [870°C] and hold for 1 h plus an additional 30 min for each ½ in. [13 mm] of cross section over 1 in. <sup>B</sup> Cool to 1300°F [705°C] <sup>C</sup> and hold at temperature for 30 min then quench in oil to room temperature.
M-25S, Class 3	Load into furnace at 600°F [315°C] maximum. Heat slowly to 1100°F [605°C] and hold to develop maximum hardness. Furnace or air cool to room temperature.
N-12MV, N-7M	Heat to 2000°F [1095°C] minimum, hold for sufficient time to heat castings to temperature, quench in water or rapid cool by other means.
CW-12MW, CW-6M, CW-6MC, CW-2M	Heat to 2150°F [1175°C] minimum, hold for sufficient time to heat castings to temperature, quench in water or rapid cool by other means.
CY-40, Class 2	Heat to 1900°F [1040°C] minimum, hold for sufficient time to heat castings to temperature, quench in water or rapid cool by other means.
CX2MW (N26022)	Heat to 2200°F [1205°C] minimum, hold for sufficient time to heat castings to temperature, quench in water or rapid air cool by other means.
CU5MCuC (N28820)	Heat to 2100°F [1150°C] minimum, hold for sufficient time to heat castings to temperature, quench in water. Stabilize at 1725–1815°F [940–990°C], hold for sufficient time to heat castings to temperature, quench in water or rapid cool by other means.

<sup>A</sup> M-25S, while machinable in the “as cast” condition, is capable of being solution treated for improved machinability. It may be subsequently age hardened to the hardness specified in Table 3 and finished machined or ground.

<sup>B</sup> For cross sections over 6 in. [125 mm] it may be necessary to increase the hold time if maximum softness is desired.

<sup>C</sup> For maximum softness and the least variation in hardness levels, castings should be transferred from an oven at 1600°F [870°C] to a second oven at 1300°F [705°C].

NOTE 1—Proper heat treatment of these alloys is usually necessary to enhance corrosion resistance and, in some cases, to meet mechanical properties. Minimum heat treat temperatures are specified; however, it is sometimes necessary to heat treat at higher temperatures, hold for some minimum time at temperature, and then rapidly cool the castings in order to enhance the corrosion resistance and meet mechanical properties.

6.2 When Class 1 is specified, grades CY40 and M-25S shall be supplied in the as-cast condition. When Class 2 is specified, grades CY40 and M-25S shall be supplied in the solution-treated condition. When Class 3 is specified, grade M-25S shall be supplied in the age-hardened condition.

**7. Chemical Composition**

7.1 These alloys shall conform to the chemical composition requirements prescribed in Table 1.

7.2 An analysis of each master heat shall be made by the manufacturer to determine the percentages of the elements specified in Table 1. The analysis shall be made from a representative sample taken during the pouring of the master heat. Chemical composition shall be reported to the purchaser or his representative.

7.3 Test Methods E 76 or Test Methods E 354 shall be used for referee purposes. Test Methods E 30 or Methods E 38 shall

be used if Test Methods E 76 or Test Methods E 354 do not include a method for some element present in the material.

**8. Tensile Properties**

8.1 One tension test shall be made from each master heat except for grades M-25S and CY5SnBiM when the master heat is used to pour the castings. One tension test shall be made from each melt except for grades M-25S and CY5SnBiM. Test results shall conform to the tensile requirements specified in Table 3. Test bars shall be poured in special blocks from the same heat as the castings represented.

8.2 The bar from which the test specimen is taken shall be heat treated in production furnaces to the same procedure as the castings it represents. If the castings are not heat treated, the bar used for the test specimen must not be heat treated.

8.3 Test specimens may be cut from castings, at the producer’s option, instead of from test bars.

8.4 When castings are produced by methods other than investment process, tension test coupons shall be machined to the form and dimension shown in Fig. 8 of, and tested in accordance with, Test Methods E 8.

8.4.1 When castings are produced by the investment process, test specimens in accordance with Specification A 732/

**TABLE 3 Mechanical Properties**

	CZ-100	M-35-1	M-35-2	M-30H	M-25S	M-30C	N-12MV	N-7M	CY-40	CW-12MW	CW-6M	CW-2M	CW-6MC	CY5SnBiM	CX2MW (N26022)	CU5MCuC (N28820)
Tensile strength, min, psi [MPa]	50 000 [345]	65 000 [450]	65 000 [450]	100 00 [690]	...	65 000 [450]	76 000 [525]	76 000 [525]	70 000 [485]	72 000 [495]	72 000 [495]	70 000 [485]	...	80 000 [550]	75 000 [520]	
Yield strength, min, psi [MPa]	18 000 [125]	25 000 [170]	30 000 [205]	60 000 [415]	...	32 500 [225]	40 000 [275]	40 000 [275]	28 000 [195]	40 000 [275]	40 000 [275]	40 000 [275]	...	45 000 [310]	35 000 [240]	
Elongation in 2 in. [50 mm], <sup>A</sup> min, %	10.0	25.0	25.0	10.0	...	25.0	6.0	20.0	30.0	4.0	25.0	20.0	25.0	30.0	20.0	
Hardness HB	...	...	...	...	<sup>B</sup>	...	...	...	...	...	...	...	...	...	...	

<sup>A</sup> When ICI test bars are used in tensile testing as provided for in Specification A 732/A 732M, the gage length to reduced section diameter ratio shall be 4 to 1.

<sup>B</sup> 300 HB minimum for the age hardened condition.

A 732M shall be used for measurement of tensile properties.

8.5 If any specimen shows defective machining or develops flaws, it may be discarded and another substituted from the same heats.

8.6 To determine conformance with the tension test requirements, an observed value or calculated value shall be rounded in accordance with Practice E 29 to the nearest 500 psi [3.5 MPa] for yield and tensile strength and to the nearest 1 % for elongation and reduction of area.

## 9. Workmanship, Finish, and Appearance

9.1 Critical surfaces of all castings intended for corrosion-resistant service shall be cleaned. Cleaning may be accomplished by blasting with clean sand or metallic corrosion-resistant shot or by other approved methods.

## 10. Quality

10.1 The castings shall not be peened, plugged or impregnated to stop leaks.

10.2 Internal chills and chaplets may be used in the manufacture of castings. However, the chills, chaplets and affected cast material must be completely removed.

## 11. Repair by Welding

11.1 Repairs shall be made by using a welding procedure and operators capable of producing sound welds. The composition of deposited weld metal shall be similar to that of the castings.

11.2 Weld repairs shall be considered major in the case of a casting that has leaked on hydrostatic test or when the depth of the cavity after preparation for repair exceeds 20 % of the actual wall thickness, or 1 in. [25 mm], whichever is smaller, or when the extent of the cavity exceeds approximately 10 in.<sup>2</sup> [65 cm<sup>2</sup>]. All other weld repairs shall be considered minor. Major and minor weld repairs shall be subject to the same quality standards as are used to inspect the castings.

11.3 Castings of M-30H, M-25S, and CY5SnBiM may not be weld repaired.

11.4 Grades N-12MV, N-7M, CW-12MW, CW-6M, CW-2M, and CX2MW may require post weld heat treatment after major weld repairs. If post weld heat treatment is required, it must be specified along with the grade. If required, it shall be performed in accordance with Section 6.

11.5 For grade CU5MCuC, the composition of the deposited weld metal shall be similar to that of AWS A5.14 ER NiCrMo-3 (UNS N06625) or AWS A5.11 E NiCrMo-3 (UNS W86112).

## 12. Rejection and Rehearing

12.1 Samples that represent rejected material shall be preserved for two weeks from the date of transmission of the rejection report. In case of dissatisfaction with the results of the tests, the manufacturer may make claim for a rehearing within that time.

## 13. Product Marking

13.1 Castings shall be marked for the material identification with the ASTM specification designation (A 494/A 494M) and grade symbol, that is, CY-40. The manufacturer's name or identification mark and the pattern number shall be cast or stamped on all castings except those of such small size as to make such marking impractical. To minimize small defects caused by dislodged particles of molding sand, the number of cast identification marks shall be minimized. The marking of heat numbers on individual castings shall be agreed upon by the manufacturer and the purchaser. Markings shall be in such position as not to injure the usefulness of the casting.

13.1.1 When the castings are too small to mark individually, a symbol traceable to the heat shall be placed on the castings and the required identification then placed on a tag affixed to the container in which these castings are shipped.

## 14. Keywords

14.1 corrosion resistant applications; nickel; nickel alloy castings; nickel alloys; nickel castings

## SUPPLEMENTARY REQUIREMENTS

The following supplementary requirements shall not apply unless specified in the purchase order. A list of standard supplementary requirements for use at the option of the purchaser is included in Specification A 781/A 781M. Those which are ordinarily considered for use with this specification are given below; others enumerated in Specification A 781/A 781M may be used with this specification upon agreement between the manufacturer and the purchaser.

### S2. Radiographic Examination

### S3. Liquid Penetrant Examination

### S6. Certification

### S10. Hardness Tests

S10.1 When composition M-25S material is ordered with a hardness maximum or range in the as-cast or solution treated condition, hardness tests shall be made in accordance with Test Methods and Definitions A 370. The test location, number of

tests, and hardness values shall be agreed upon between the manufacturer and purchaser.

S10.1.1 If castings are ordered in the as-cast condition, hardness determinations shall be made on two different representative areas of each casting or coupon selected for test.

S10.1.1.1 By agreement between purchaser and producer, those as-cast castings which fail to meet the required hardness may be accepted in the solution annealed and hardened condition if the hardness thus developed meets the hardness requirement of the specification.

S10.1.2 If castings ordered are in the solution-treated condition, two sample castings or two coupons representing the lot shall be heat treated for tests (see S10.1.1). Hardness determinations shall be made on two different representative areas of each casting or coupon.

S10.1.3 When hardness tests are made, the specimens shall be at least 1/4 in. [6 mm] in thickness and the area to be tested shall be ground clean before the hardness tests are made.

**S22. Weldability Test**

S22.1 If weldability tests are specified for M-30-C or M-35-1, prepare a coupon obtained from a test bar shown in Fig. 1 or Fig. 2 for each lot of composition M-30-C or M-35-1 castings. The weld test to be used shall be agreed upon between the purchaser and manufacturer.

S22.1.1 Prepare and weld the test bar cast in accordance with Fig. 1 and in accordance with Fig. 3.

S22.1.1.1 Machine the cast skin and unsound metal from two adjacent faces of the as-cast specimen, exclude the riser face, and cut the specimen into approximately 6-in. [150-mm] lengths.

S22.1.1.2 Clamp the two 6-in. [150 mm] lengths together to form a double V-joint and weld two passes at a time on alternate sides of the specimen using 1/8-in. [3-mm] diameter electrodes that will deposit metal of similar composition of the test pieces.

S22.1.1.3 Allow the specimen to cool to room temperature between passes, remove all flux, and examine visually for cracks.

S22.1.1.4 The clamps may be removed from the specimen after the first two weld passes have been completed.

S22.1.1.5 Deposit alternate series of passes until the double V-groove has been completely filled. After the second series (number 4 pass) a 5/32-in. [4-mm] diameter electrode may be used if desired.

S22.1.1.6 During welding allow each pass to cool, clean, and examine visually for cracks. The presence of cracks shall be cause for rejection.

S22.1.1.7 Upon completion of the welding, cut one section approximately 3/4 in. [19 mm] long transverse to the weld from each end and discard.

S22.1.1.8 Polish each end of the remaining center section on a 100/200-grit wheel and etch with concentrated HNO<sub>3</sub> or with Lepito's etchant. Prepare Lepito's etchant as follows: (a) 15 g of (NH<sub>4</sub>)<sub>2</sub>SO<sub>4</sub> dissolved in 75 cm<sup>3</sup> of water; (b) 250 g of FeCl<sub>3</sub>(powdered) dissolved in 100 cm<sup>3</sup> of HCl; (c) mix solutions (a) and (b) and add 30 cm<sup>3</sup> of HNO<sub>3</sub>.

S22.1.1.9 Examine the etched section under low magnification (5 to 10X). The lot represented by the test specimen shall be accepted if it complies with the following crack requirements: (a) Three cracks maximum in linear inch of base metal and (b) The length of any crack in the base metal does not exceed 0.20 in. [5 mm].

S22.1.1.10 Cracks observed in the weld metal during the low-magnification examination shall not be cause for rejection.

S22.1.1.11 Failure of welded test bars to comply with any of the requirements S22.1 through S22.1.1.10 shall result in rejection of the lot represented.

S22.1.2 Prepare and weld the test bar cast in accordance with Fig. 2 as follows:

S22.1.2.1 Fill the groove in the block completely with weld deposit using manual metallic arc process with 1/8-in. [3.2-mm] or 5/32-in. [4-mm] diameter electrodes that will deposit metal of similar composition of the test piece.

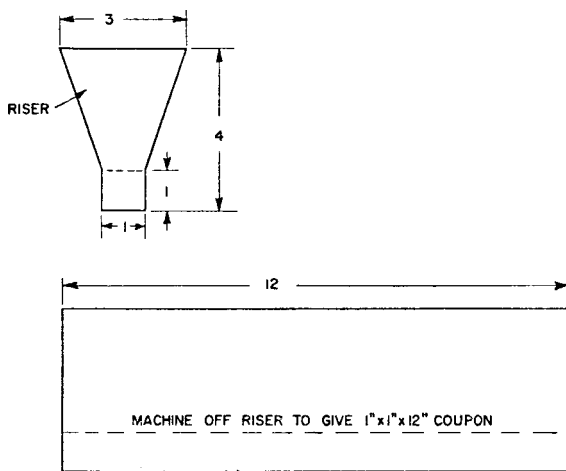
S22.1.2.2 Remove one 3/8-in. [10-mm] thick bend coupon longitudinally from the welded block by machining, sawing, abrasive cutting, or other suitable means. Make a transverse side bend test of the welded joint in accordance with Practice A 488/A 488M.

S22.1.2.3 Remove a transverse weld macro-specimen from the welded plate and visually examine for cracks. This specimen may be the same one to be used for the bend specimen.

**S22.1.3 Acceptance:**

S22.1.3.1 Cracks as tears in the casting in the fusion zone or heat-affected zone of the macro-specimen shall be cause for rejection. Cracks originating at the weld bead undercuts, at weld slag inclusions, or at casting defects shall not be cause for rejection.

S22.1.3.2 Cracks or other open defects exceeding 1/8-in. [3.2 mm] measured in any direction on the convex surface of the bent specimens shall be cause for rejection, except that cracks occurring on the corners while testing and cracks originating at weld bead undercuts shall not be considered.

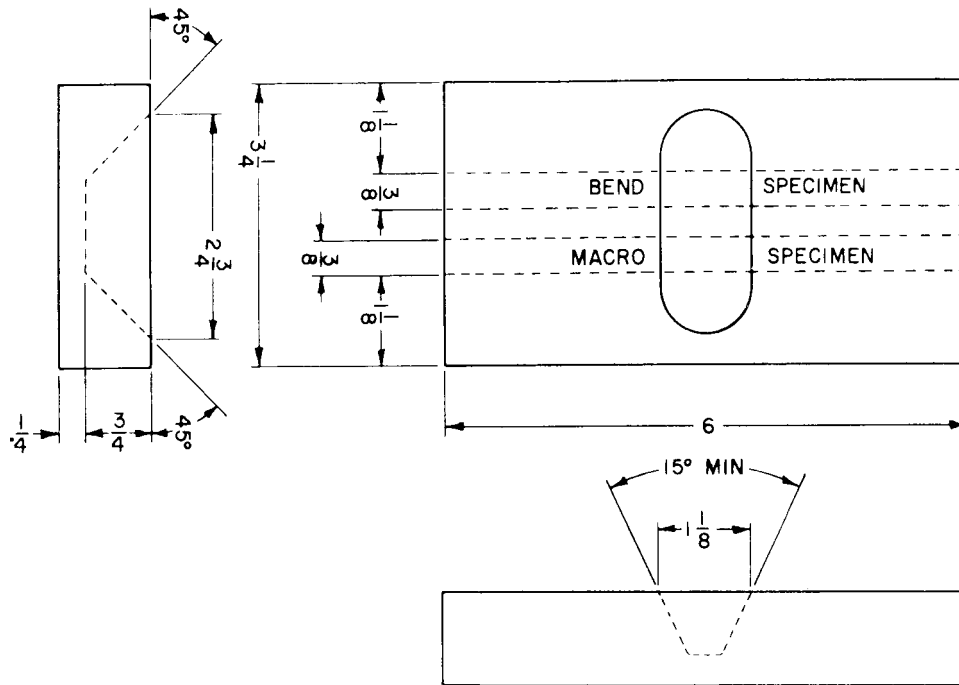


**Metric Equivalents**

in.	1	3	4	12
[mm]	[25]	[75]	[100]	[305]

NOTE 1—Riser shall be machined off and 1 in. [25 mm] square by 12 in. [305 mm] coupon shall be used for x-weld test. See Fig. 3.

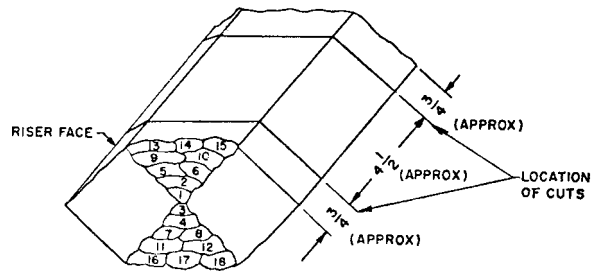
**FIG. 1 Weld Test Bar (As Cast)**



Metric Equivalents

in.	1/4	3/8	3/4	1 1/8	2 3/4	3 1/4	6
[mm]	[5]	[10]	[20]	[30]	[70]	[85]	[155]

FIG. 2 Weld Test Bar (As Cast)



Metric Equivalents


in.	3/4	4 1/2
[mm]	[20]	[115]

FIG. 3 X-Weld Test

### SUMMARY OF CHANGES

This section identifies the the principle changes to this specification that have been made since the last issue.

- (1) Metric value for yield strength of CX2MW in Table 3—Revised.

 **A 494/A 494M**

*The American Society for Testing and Materials takes no position respecting the validity of any patent rights asserted in connection with any item mentioned in this standard. Users of this standard are expressly advised that determination of the validity of any such patent rights, and the risk of infringement of such rights, are entirely their own responsibility.*

*This standard is subject to revision at any time by the responsible technical committee and must be reviewed every five years and if not revised, either reapproved or withdrawn. Your comments are invited either for revision of this standard or for additional standards and should be addressed to ASTM Headquarters. Your comments will receive careful consideration at a meeting of the responsible technical committee, which you may attend. If you feel that your comments have not received a fair hearing you should make your views known to the ASTM Committee on Standards, at the address shown below.*

*This standard is copyrighted by ASTM, 100 Barr Harbor Drive, PO Box C700, West Conshohocken, PA 19428-2959, United States. Individual reprints (single or multiple copies) of this standard may be obtained by contacting ASTM at the above address or at 610-832-9585 (phone), 610-832-9555 (fax), or [service@astm.org](mailto:service@astm.org) (e-mail); or through the ASTM website ([www.astm.org](http://www.astm.org)).*