



Standard Specification for Desk, Log, Marine, Steel, with Cabinet¹

This standard is issued under the fixed designation F 823; the number immediately following the designation indicates the year of original adoption or, in the case of revision, the year of last revision. A number in parentheses indicates the year of last reapproval. A superscript epsilon (ϵ) indicates an editorial change since the last revision or reapproval.

1. Scope

1.1 This specification covers the construction of marine log desks of steel construction with cabinets.

1.2 Values stated in inch-pound units are to be regarded as the standard. The metric equivalents, given in parentheses, are provided for information only.

2. Referenced Documents

2.1 ASTM Standards:

- A 366/A 366M Specification for Commercial Steel (CS) Sheet, Carbon, (0.15 Maximum Percent) Cold-Rolled²
- D 907 Terminology of Adhesives³
- F 782 Specification for Doors, Furniture, Marine⁴
- F 825 Specification for Drawers, Furniture, Marine, Steel⁴
- F 826 Specification for Tops, Furniture, Marine, Steel⁴

2.2 American Institute of Steel Construction Manual:

- AISC Wire and Sheet Metal Gages— Equivalent Thickness in Decimals of an Inch, U.S. Standard Gage for Uncoated Hot and Cold Rolled Sheets⁵

3. Terminology

3.1 Definitions of Terms Specific to This Standard:

3.1.1 *log desk with cabinet*—a desk with attached cabinet located in various places aboard ship for making records and for storage. Log desk has a drawer with a writing surface at the top and a cabinet with adjustable shelves and doors below.

4. Ordering Information

4.1 Orders for items purchased under this specification shall include the following information:

4.1.1 Quantity.

4.1.2 Paint:

4.1.2.1 *Color*—Purchaser shall pick from manufacturer's samples or submit sample chip of color desired.

4.1.2.2 Manufacturer's standard baked enamel will be furnished unless otherwise required and indicated by the purchaser.

4.1.3 Options for Tops:

4.1.3.1 Unless otherwise specified in the ordering documents, the top supplied by the furniture manufacturer may be, at his option, Type I, II, III, or IV in accordance with Specification F 826.

4.1.3.2 Color or pattern of top covering material shall be specified.

4.1.4 *Options for Drawers*—Drawer locks shall be furnished only when specified in ordering documents. Master keying of drawer locks will not be provided unless required and defined by the ordering documents. See Specification F 825 for lock description.

4.1.5 *Options for Doors*—Door locks shall be furnished only when specified in ordering documents. Master keying of door locks will not be provided unless required and defined in the ordering documents. Doors shall be Type I in accordance with Specification F 782.

4.1.6 If the total weight of the chest of drawers is required it shall be requested by the purchaser.

5. Materials and Manufacture

5.1 For typical design, see Fig. 1.

5.2 Sheet metal shall be in accordance with Specification A 366/A 366M, commercial quality.

5.2.1 Minimum sheet metal thickness shall be:

5.2.1.1 Sides and front rails 18 USSG (0.0478 in. or 1.2 mm).

5.2.1.2 Back 20 USSG (0.0359 in. or 0.9 mm).

5.2.1.3 Base frame 16 USSG (0.0598 in. or 1.5 mm).

5.3 Joining of Metal Components:

5.3.1 Metal components shall be joined by welding or gluing with a structural adhesive as defined in Terminology D 907. The back panel may be riveted to case provided rivets are not visible after installation.

5.3.2 Joining shall be adequate to prevent racking of chest during handling.

5.3.3 Spotwelds shall be spaced approximately 3 in. (76 mm) on centers.

5.3.4 Visible spotwelds, higher than the general surface of the adjacent metal, shall be ground flush.

¹ This specification is under the jurisdiction of ASTM Committee F-25 on Ships and Marine Technology and is the direct responsibility of Subcommittee F25.03 on Outfitting.

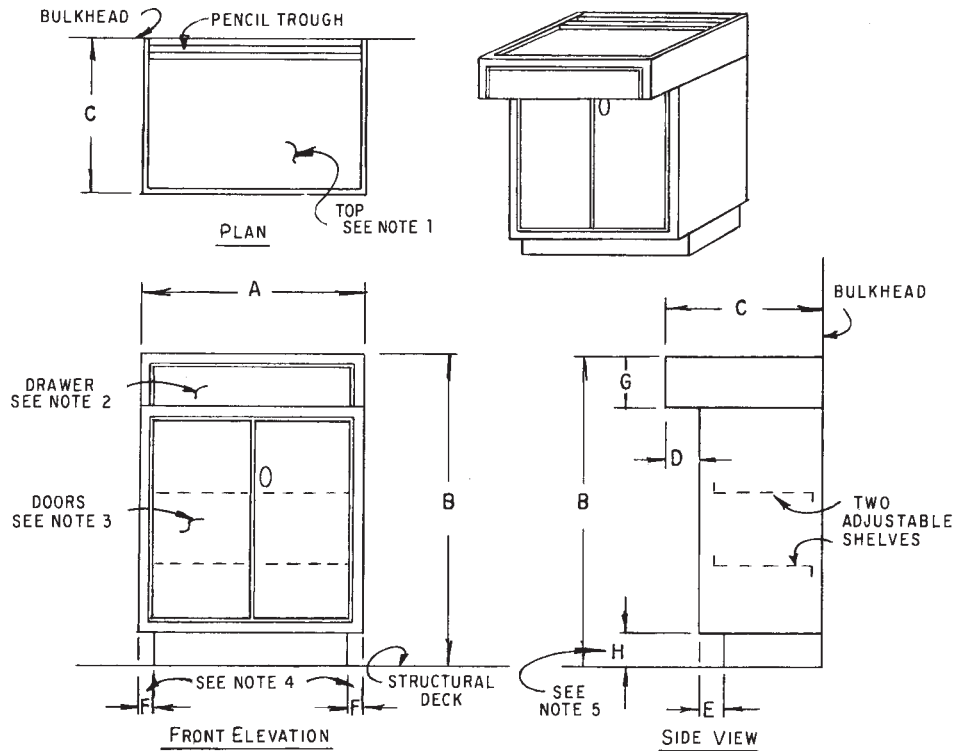
Current edition approved August 15, 1993. Published October 1993. Originally published as F 823 – 83. Last previous edition F 823 – 88.

² *Annual Book of ASTM Standards*, Vol 01.03.

³ *Annual Book of ASTM Standards*, Vol 15.06.

⁴ *Annual Book of ASTM Standards*, Vol 01.07.

⁵ Available from the American Institute of Steel Construction, One E. Wacker Dr., Chicago, IL 60601–2001.



NOTE 1—For description of Type I, II, III, and IV tops, see Specification F 826.

NOTE 2—For description of drawers, see Specification F 825.

NOTE 3—For description of Type I doors and available alternates, see Specification F 782.

NOTE 4—If log desk is located in a corner, Dimension “F” next to this adjacent wall shall be 0 in. (0 mm). In all other cases, the minimum value for Dimension “F” shall be ¾ in. (19.05 mm).

NOTE 5—The minimum value for Dimension “H” shall be 4 in. (102 mm).

FIG. 1 Log Desk with Cabinet

5.3.5 Visible spotweld depressions shall be spot filled and sanded flush.

5.4 Side panels shall be stiffened suitably to prevent buckling or oil-canning.

5.5 Sound deadening shall be vermin proof and applied to back and inner face of sides of chest. Location and thickness of applied sound deadener shall be as required to sound-deaden chest.

5.6 Top shall be manufactured in accordance with Specification F 826.

5.7 Drawers shall be manufactured in accordance with Specification F 825.

5.8 Doors shall be Type I, Grade A and shall be manufactured in accordance with Specification F 782.

5.9 Cabinet section shall be provided with two adjustable shelves.

5.10 Top shall be provided with a pencil tray along back edge.

5.11 A furniture base shall be provided suitable for securing log desk to deck.

6. Performance Requirements

6.1 The completed log desk with cabinet, with top, drawers, and doors installed, shall satisfy the corresponding performance requirements outlined in Specifications F 826, F 825, and F 782.

7. Dimensions

7.1 For dimensions, see Table 1.

8. Workmanship, Finish, and Quality Assurance

8.1 All workmanship and material shall be of specified quality in keeping with the best commercial marine practice so as to produce each item suitable for its intended use.

8.2 All exposed burrs, raw or sharp edges which might be injurious to personnel shall be removed.

8.3 Depressions considered unacceptable for product’s end use shall be spot filled and sanded smooth.

8.4 Finish:

8.4.1 All steel surfaces unless corrosion resistant or with a corrosion-resistant plating shall be painted so as to prevent corrosion.

8.4.2 Unless otherwise required by the ordering documents, all parts normally visible on the completed unit shall have the manufacturer’s standard baked-on enamel finish.

8.4.3 Color to be specified in the ordering documents.

9. Inspection and Certification

9.1 Manufacturer shall inspect and certify that the item of furniture complies with the furniture specification and the loading requirements as defined in Section 6.

TABLE 1 Dimensions of Log Desk with Cabinet

| Designation | in. | | mm | |
|------------------------------|-----------|-----------------------------------|-----------|---------------------|
| | Dimension | Tolerance To + Or – | Dimension | Tolerance To + Or – |
| Width | A | 30 | 762 | 2 |
| Height | B | 42 | 1067 | 2 |
| Depth | C | 24 | 610 | 2 |
| Drawer section overhang | D | 5 ⁵ / ₈ | 143 | 2 |
| Toespace, front, | E | 3 max | 76 max | 2 |
| Toespace, side, ^A | F | 4 max | 102 max | 2 |
| Drawer section height | G | 7 max | 178 max | 2 |
| Base height ^B | H | 4 ³ / ₄ max | 121 max | 2 |

^AIf log desk is located in a corner, Dimension F next to this adjacent wall shall be 0 in. (0 mm). In all other cases, the minimum value for Dimension F shall be ³/₄in. (19 mm).

^BThe minimum value for Dimension H shall be 4 in. (120 mm).

10. Packaging and Package Marking

10.1 Each item shall be marked in accordance with the purchase order.

10.2 Packaging shall be provided and shall be acceptable to a common carrier.

11. Keywords

11.1 cabinets; log desks; marine furniture; marine log desks; steel log desks

The American Society for Testing and Materials takes no position respecting the validity of any patent rights asserted in connection with any item mentioned in this standard. Users of this standard are expressly advised that determination of the validity of any such patent rights, and the risk of infringement of such rights, are entirely their own responsibility.

This standard is subject to revision at any time by the responsible technical committee and must be reviewed every five years and if not revised, either reapproved or withdrawn. Your comments are invited either for revision of this standard or for additional standards and should be addressed to ASTM Headquarters. Your comments will receive careful consideration at a meeting of the responsible technical committee, which you may attend. If you feel that your comments have not received a fair hearing you should make your views known to the ASTM Committee on Standards, at the address shown below.

This standard is copyrighted by ASTM, 100 Barr Harbor Drive, PO Box C700, West Conshohocken, PA 19428-2959, United States. Individual reprints (single or multiple copies) of this standard may be obtained by contacting ASTM at the above address or at 610-832-9585 (phone), 610-832-9555 (fax), or service@astm.org (e-mail); or through the ASTM website (www.astm.org).