



Designation: C 1433 – 00a

Standard Specification for Precast Reinforced Concrete Box Sections for Culverts, Storm Drains, and Sewers¹

This standard is issued under the fixed designation C 1433; the number immediately following the designation indicates the year of original adoption or, in the case of revision, the year of last revision. A number in parentheses indicates the year of last reapproval. A superscript epsilon (ϵ) indicates an editorial change since the last revision or reapproval.

1. Scope

1.1 This specification covers single-cell precast reinforced concrete box sections intended to be used for the construction of culverts and for the conveyance of storm water industrial wastes and sewage.

1.2 This specification is the companion to SI Specification C 1433M; therefore, no SI equivalents are shown in this specification.

NOTE 1—This specification is primarily a manufacturing and purchasing specification. However, standard designs are included and the criteria used to develop these designs are given in Appendix X1. The successful performance of this product depends upon the proper selection of the box section, bedding, backfill, and care that the installation conforms to the construction specifications. The purchaser of the precast reinforced concrete box sections specified herein is cautioned that proper correlation of the loading conditions and the field requirements with the box section specified, and provision for inspection at the construction site, are required.

2. Referenced Documents

2.1 *ASTM Standards*:

- A 82 Specification for Steel Wire, Plain, for Concrete Reinforcement²
- A 185 Specification for Steel Welded Wire Fabric, Plain, for Concrete Reinforcement²
- A 496 Specification for Steel Wire, Deformed, for Concrete Reinforcement²
- A 497 Specification for Steel Welded Wire Fabric, Deformed, for Concrete Reinforcement²

¹ This specification is under the jurisdiction of Committee C13 on Concrete Pipe and is the direct responsibility of Subcommittee C13.07 on Acceptance Specifications and Precast Concrete Box Sections.

Current edition approved Oct. 10, 2000. Published November 2000. Originally published as C 1433-99. Last previous edition C 1433-00.

² *Annual Book of ASTM Standards*, Vol 01.04.

- A 615/A 615M Specification for Deformed and Plain Billet-Steel Bars for Concrete Reinforcement²
- C 31/C 31M Practice for Making and Curing Concrete Test Specimens in the Field³
- C 33 Specification for Concrete Aggregates³
- C 39 Test Method for Compressive Strength of Cylindrical Concrete Specimens³
- C 150 Specification for Portland Cement⁴
- C 309 Specification for Liquid Membrane-Forming Compounds for Curing Concrete³
- C 497 Test Methods for Concrete Pipe, Manhole Sections, or Tile [Metric]⁵
- C 595 Specification for Blended Hydraulic Cements⁴
- C 618 Specification for Coal Fly Ash and Raw or Calcined Natural Pozzolan for Use as a Mineral Admixture in Concrete³
- C 822 Terminology Relating to Concrete Pipe and Related Products⁵
- 2.2 *AASHTO Standard*:⁶
Specifications for Highway Bridges, 1997 Edition

3. Terminology

3.1 *Definitions*—For definitions of terms relating to concrete pipe, see Terminology C 822.

4. Types

4.1 Precast reinforced concrete box sections manufactured in accordance with this specification shall be one of two types identified in Tables 1 and 2, and shall be designated by type, span, rise, and design earth cover.

³ *Annual Book of ASTM Standards*, Vol 04.02.

⁴ *Annual Book of ASTM Standards*, Vol 04.01.

⁵ *Annual Book of ASTM Standards*, Vol 04.05.

⁶ Available from American Association of State Highway and Transportation Officials (AASHTO).

TABLE 1 Design Requirements for Precast Concrete Box Sections Under Earth Dead and HS20 Live Load Conditions

NOTE 1—Design earth covers and reinforcement areas are based on the weight of a column of earth over the width of the box section as defined in Appendix X1.

NOTE 2—Concrete design strength 5000 psi.

NOTE 3—The design earth cover indicated is the height of fill above the top of the box section. Design requirements are based on the material and soil properties, loading data, and typical section as included in Appendix X1. For alternative or special designs, see 7.2.

NOTE 4—Design steel area in square inches per linear foot of box section at those locations which are indicated on the typical section included in Appendix X1.

NOTE 5—The top section designation, for example, 3 ft by 2 ft by 4 in. indicates (interior horizontal span in feet) by (interior vertical rise in feet) by (wall and slab thickness in inches).

NOTE 6—In accordance with the acceptance criteria in 7.2, the manufacturer may interpolate the steel area requirements for fill heights between noted increments or may submit independent designs.

3 ft by 2 ft by 4 in.									
Design Earth Cover, ft	Circumferential Reinforcement Areas, in. ² /ft								"M," in.
	A _{s1}	A _{s2}	A _{s3}	A _{s4}	A _{s5}	A _{s6}	A _{s7}	A _{s8}	
0<2 ^A	0.17	0.39	0.22	0.10	0.19	0.17	0.17	0.14	
2<3	0.15	0.27	0.27	0.10					18
3-5	0.10	0.12	0.12	0.10					18
10	0.10	0.10	0.10	0.10					18
15	0.10	0.13	0.14	0.10					18
20	0.11	0.17	0.18	0.10					18
25	0.14	0.22	0.22	0.10					18
30	0.17	0.26	0.26	0.10					18

^A Top slab 7 in., bottom slab 6 in.

3 ft by 3 ft by 4 in.									
Design Earth Cover, ft	Circumferential Reinforcement Areas, in. ² /ft								"M," in.
	A _{s1}	A _{s2}	A _{s3}	A _{s4}	A _{s5}	A _{s6}	A _{s7}	A _{s8}	
0<2 ^A	0.17	0.41	0.23	0.10	0.20	0.17	0.17	0.14	
2<3	0.11	0.31	0.31	0.10					18
3-5	0.10	0.14	0.14	0.10					18
10	0.10	0.11	0.11	0.10					18
15	0.10	0.15	0.15	0.10					18
20	0.10	0.19	0.20	0.10					18
25	0.10	0.23	0.24	0.10					18
30	0.12	0.28	0.29	0.10					18

^A Top slab 7 in., bottom slab 6 in.

4 ft by 2 ft by 5 in.									
Design Earth Cover, ft	Circumferential Reinforcement Areas, in. ² /ft								"M," in.
	A _{s1}	A _{s2}	A _{s3}	A _{s4}	A _{s5}	A _{s6}	A _{s7}	A _{s8}	
0<2 ^A	0.18	0.42	0.22	0.12	0.21	0.18	0.18	0.14	
2<3	0.24	0.29	0.25	0.12					18
3-5	0.12	0.14	0.14	0.12					18
10	0.12	0.12	0.12	0.12					18
15	0.15	0.16	0.16	0.12					18
20	0.19	0.21	0.21	0.12					18
25	0.24	0.26	0.26	0.12					18
30	0.28	0.31	0.31	0.12					18

^A Top slab 8 in., bottom slab 6 in.

4 ft by 3 ft by 5 in.									
Design Earth Cover, ft	Circumferential Reinforcement Areas, in. ² /ft								"M," in.
	A _{s1}	A _{s2}	A _{s3}	A _{s4}	A _{s5}	A _{s6}	A _{s7}	A _{s8}	
0<2 ^A	0.18	0.46	0.25	0.12	0.23	0.18	0.18	0.14	
2<3	0.20	0.35	0.31	0.12					18
3-5	0.12	0.17	0.17	0.12					18
10	0.12	0.14	0.14	0.12					18

15	0.12	0.19	0.19	0.12					18
20	0.14	0.24	0.25	0.12					18
25	0.18	0.30	0.30	0.12					18
30	0.21	0.36	0.36	0.12					18

^A Top slab 8 in., bottom slab 6 in.

4 ft by 4 ft by 5 in.									
Design Earth Cover, ft	Circumferential Reinforcement Areas, in. ² /ft								"M," in.
	A _{s1}	A _{s2}	A _{s3}	A _{s4}	A _{s5}	A _{s6}	A _{s7}	A _{s8}	
0<2 ^A	0.18	0.48	0.27	0.12	0.24	0.18	0.18	0.14	
2<3	0.16	0.38	0.34	0.12					18
3-5	0.12	0.18	0.18	0.12					18
10	0.12	0.15	0.15	0.12					18
15	0.12	0.20	0.21	0.12					18
20	0.12	0.26	0.26	0.12					18
25	0.15	0.31	0.32	0.12					18
30	0.17	0.38	0.38	0.12					18

^A Top slab 8 in., bottom slab 6 in.

5 ft by 3 ft by 6 in.									
Design Earth Cover, ft	Circumferential Reinforcement Areas, in. ² /ft								"M," in.
	A _{s1}	A _{s2}	A _{s3}	A _{s4}	A _{s5}	A _{s6}	A _{s7}	A _{s8}	
0<2 ^A	0.19	0.47	0.24	0.14	0.22	0.19	0.19	0.17	
2<3	0.26	0.36	0.28	0.14					18
3-5	0.14	0.19	0.19	0.14					18
10	0.14	0.16	0.16	0.14					18
15	0.17	0.22	0.22	0.14					18
20	0.21	0.28	0.29	0.14					18
25	0.26	0.35	0.35	0.14					18
30	0.32	0.42	0.42	0.14					18

^A Top slab 8 in., bottom slab 7 in.

5 ft by 4 ft by 6 in.									
Design Earth Cover, ft	Circumferential Reinforcement Areas, in. ² /ft								"M," in.
	A _{s1}	A _{s2}	A _{s3}	A _{s4}	A _{s5}	A _{s6}	A _{s7}	A _{s8}	
0<2 ^A	0.19	0.50	0.27	0.14	0.24	0.19	0.19	0.17	
2<3	0.22	0.41	0.33	0.14					18
3-5	0.14	0.21	0.21	0.14					18
10	0.14	0.17	0.18	0.14					18
15	0.14	0.24	0.25	0.14					18
20	0.18	0.31	0.32	0.14					18
25	0.22	0.38	0.39	0.14					18
30	0.26	0.46	0.46	0.14					18

^A Top slab 8 in., bottom slab 7 in.

5 ft by 5 ft by 6 in.									
Design Earth Cover, ft	Circumferential Reinforcement Areas, in. ² /ft								"M," in.
	A _{s1}	A _{s2}	A _{s3}	A _{s4}	A _{s5}	A _{s6}	A _{s7}	A _{s8}	
0<2 ^A	0.19	0.52	0.29	0.14	0.24	0.19	0.19	0.17	
2<3	0.19	0.43	0.35	0.14					18
3-5	0.14	0.22	0.22	0.14					18
10	0.14	0.18	0.19	0.14					18
15	0.14	0.25	0.26	0.14					18
20	0.15	0.32	0.33	0.14					18
25	0.19	0.40	0.41	0.14					18
30	0.23	0.47	0.48	0.14					18

^A Top slab 8 in., bottom slab 7 in.

6 ft by 3 ft by 7 in.									
Design Earth Cover, ft	Circumferential Reinforcement Areas, in. ² /ft								"M," in.
	A _{s1}	A _{s2}	A _{s3}	A _{s4}	A _{s5}	A _{s6}	A _{s7}	A _{s8}	
0<2 ^A	0.25	0.48	0.23	0.17	0.21	0.19	0.19	0.17	18
2<3	0.30	0.38	0.26	0.17					18
3-5	0.17	0.20	0.17	0.17					18
10	0.17	0.18	0.18	0.17					18
15	0.23	0.25	0.25	0.17					18

20	0.29	0.32	0.32	0.17	18
25	0.36	0.39	0.40	0.17	18
30	0.43	0.47	0.47	0.17	18

^A Top slab 8 in.

6 ft by 4 ft by 7 in.

Design Earth Cover, ft	Circumferential Reinforcement Areas, in. ² /ft								"M," in.
	A _{s1}	A _{s2}	A _{s3}	A _{s4}	A _{s5}	A _{s6}	A _{s7}	A _{s8}	
0<2 ^A	0.20	0.52	0.26	0.17	0.22	0.19	0.19	0.17	
2<3	0.26	0.42	0.31	0.17					18
3-5	0.17	0.23	0.21	0.17					18
10	0.17	0.20	0.21	0.17					18
15	0.19	0.28	0.28	0.17					18
20	0.25	0.36	0.36	0.17					18
25	0.30	0.44	0.45	0.17					18
30	0.36	0.52	0.53	0.17					18

^A Top slab 8 in.

6 ft by 5 ft by 7 in.

Design Earth Cover, ft	Circumferential Reinforcement Areas, in. ² /ft								"M," in.
	A _{s1}	A _{s2}	A _{s3}	A _{s4}	A _{s5}	A _{s6}	A _{s7}	A _{s8}	
0<2 ^A	0.19	0.55	0.29	0.17	0.24	0.19	0.19	0.17	
2<3	0.23	0.45	0.34	0.17					18
3-5	0.17	0.24	0.22	0.17					18
10	0.17	0.21	0.23	0.17					18
15	0.17	0.29	0.31	0.17					18
20	0.21	0.38	0.39	0.17					18
25	0.26	0.46	0.48	0.17					18
30	0.31	0.56	0.58	0.17					18

^A Top slab 8 in.

6 ft by 6 ft by 7 in.

Design Earth Cover, ft	Circumferential Reinforcement Areas, in. ² /ft								"M," in.
	A _{s1}	A _{s2}	A _{s3}	A _{s4}	A _{s5}	A _{s6}	A _{s7}	A _{s8}	
0<2 ^A	0.19	0.57	0.31	0.17	0.25	0.19	0.19	0.17	
2<3	0.21	0.48	0.36	0.17					18
3-5	0.17	0.25	0.23	0.17					18
10	0.17	0.22	0.24	0.17					18
15	0.17	0.31	0.32	0.17					18
20	0.19	0.39	0.41	0.17					18
25	0.23	0.48	0.49	0.17					18
30	0.28	0.58	0.61	0.17					18

^A Top slab 8 in.

7 ft by 4 ft by 8 in.

Design Earth Cover, ft	Circumferential Reinforcement Areas, in. ² /ft								"M," in.
	A _{s1}	A _{s2}	A _{s3}	A _{s4}	A _{s5}	A _{s6}	A _{s7}	A _{s8}	
0<2	0.28	0.53	0.24	0.19	0.21	0.19	0.19	0.19	
2<3	0.30	0.43	0.29	0.19					18
3-5	0.19	0.24	0.19	0.19					18
10	0.19	0.22	0.23	0.19					18
15	0.25	0.31	0.32	0.19					18
20	0.32	0.40	0.40	0.19					18
25	0.39	0.49	0.49	0.19					18
30	0.47	0.58	0.59	0.19					18

7 ft by 5 ft by 8 in.

Design Earth Cover, ft	Circumferential Reinforcement Areas, in. ² /ft								"M," in.
	A _{s1}	A _{s2}	A _{s3}	A _{s4}	A _{s5}	A _{s6}	A _{s7}	A _{s8}	
0<2	0.25	0.56	0.28	0.19	0.22	0.19	0.19	0.19	
2<3	0.27	0.47	0.33	0.19					18
3-5	0.19	0.26	0.22	0.19					18
10	0.19	0.24	0.25	0.19					18
15	0.22	0.33	0.34	0.19					18
20	0.28	0.43	0.44	0.19					18
25	0.34	0.52	0.54	0.19					18
30	0.41	0.64	0.66	0.19					18

7 ft by 6 ft by 8 in.

Design Earth Cover, ft	Circumferential Reinforcement Areas, in. ² /ft								"M," in.
	A _{s1}	A _{s2}	A _{s3}	A _{s4}	A _{s5}	A _{s6}	A _{s7}	A _{s8}	
0<2	0.22	0.58	0.30	0.19	0.23	0.19	0.19	0.19	
2<3	0.24	0.49	0.35	0.19					18
3-5	0.19	0.27	0.23	0.19					18
10	0.19	0.26	0.27	0.19					18
15	0.20	0.35	0.37	0.19					18
20	0.25	0.45	0.46	0.19					18
25	0.30	0.55	0.57	0.19					18
30	0.36	0.68	0.73	0.19					18

7 ft by 7 ft by 8 in.

Design Earth Cover, ft	Circumferential Reinforcement Areas, in. ² /ft								"M," in.
	A _{s1}	A _{s2}	A _{s3}	A _{s4}	A _{s5}	A _{s6}	A _{s7}	A _{s8}	
0<2	0.23	0.60	0.31	0.19	0.24	0.19	0.19	0.19	
2<3	0.22	0.51	0.37	0.19					18
3-5	0.19	0.28	0.24	0.19					18
10	0.19	0.27	0.29	0.19					18
15	0.19	0.36	0.38	0.19					18
20	0.23	0.46	0.48	0.19					18
25	0.28	0.56	0.58	0.19					18
30	0.33	0.70	0.77	0.19					18

8 ft by 4 ft by 8 in.

Design Earth Cover, ft	Circumferential Reinforcement Areas, in. ² /ft								"M," in.
	A _{s1}	A _{s2}	A _{s3}	A _{s4}	A _{s5}	A _{s6}	A _{s7}	A _{s8}	
0<2	0.34	0.58	0.27	0.19	0.19	0.19	0.19	0.19	
2<3	0.37	0.50	0.33	0.19					37
3-5	0.23	0.29	0.25	0.19					18
10	0.26	0.28	0.29	0.19					18
15	0.36	0.39	0.40	0.19					18
20	0.46	0.50	0.51	0.19					18
25	0.57	0.63	0.64	0.19					36

8 ft by 5 ft by 8 in.

Design Earth Cover, ft	Circumferential Reinforcement Areas, in. ² /ft								"M," in.
	A _{s1}	A _{s2}	A _{s3}	A _{s4}	A _{s5}	A _{s6}	A _{s7}	A _{s8}	
0<2	0.30	0.62	0.30	0.19	0.23	0.19	0.19	0.19	
2<3	0.35	0.54	0.37	0.19					18
3-5	0.20	0.31	0.26	0.19					18
10	0.23	0.30	0.32	0.19					18
15	0.32	0.42	0.43	0.19					18
20	0.41	0.54	0.56	0.19					18
25	0.50	0.71	0.73	0.19					31

8 ft by 6 ft by 8 in.

Design Earth Cover, ft	Circumferential Reinforcement Areas, in. ² /ft								"M," in.
	A _{s1}	A _{s2}	A _{s3}	A _{s4}	A _{s5}	A _{s6}	A _{s7}	A _{s8}	
0<2	0.28	0.64	0.33	0.19	0.24	0.19	0.19	0.19	
2<3	0.32	0.57	0.40	0.19					18
3-5	0.19	0.33	0.27	0.19					18
10	0.21	0.32	0.34	0.19					18
15	0.29	0.45	0.46	0.19					18
20	0.37	0.57	0.59	0.19					18
25	0.45	0.77	0.79	0.19					31

8 ft by 7 ft by 8 in.

Design Earth Cover, ft	Circumferential Reinforcement Areas, in. ² /ft								"M," in.
	A _{s1}	A _{s2}	A _{s3}	A _{s4}	A _{s5}	A _{s6}	A _{s7}	A _{s8}	
0<2	0.27	0.66	0.35	0.19	0.24	0.19	0.19	0.19	
2<3	0.29	0.60	0.42	0.19					18
3-5	0.19	0.33	0.29	0.19					18
10	0.20	0.34	0.36	0.19					18
15	0.27	0.46	0.49	0.19					18
20	0.34	0.60	0.62	0.19					18
25	0.42	0.80	0.84	0.19					31

8 ft by 8 ft by 8 in.

Design Earth Cover, ft	Circumferential Reinforcement Areas, in. ² /ft								"M," in.
	A _{s1}	A _{s2}	A _{s3}	A _{s4}	A _{s5}	A _{s6}	A _{s7}	A _{s8}	
0<2	0.30	0.68	0.36	0.19	0.25	0.19	0.19	0.19	
2<3	0.27	0.61	0.43	0.19					18
3-5	0.19	0.34	0.31	0.19					18
10	0.19	0.35	0.38	0.19					18
15	0.25	0.48	0.51	0.19					18
20	0.32	0.61	0.65	0.19					18
25	0.39	0.83	0.87	0.19					31

9 ft by 5 ft by 9 in.

Design Earth Cover, ft	Circumferential Reinforcement Areas, in. ² /ft								"M," in.
	A _{s1}	A _{s2}	A _{s3}	A _{s4}	A _{s5}	A _{s6}	A _{s7}	A _{s8}	
0<2	0.32	0.59	0.29	0.22	0.22	0.22	0.22	0.22	
2<3	0.37	0.54	0.35	0.22					18
3-5	0.22	0.32	0.26	0.22					18
10	0.28	0.33	0.34	0.22					18
15	0.38	0.45	0.46	0.22					18
20	0.49	0.58	0.59	0.22					18
25	0.60	0.75	0.77	0.22					33

9 ft by 6 ft by 9 in.

Design Earth Cover, ft	Circumferential Reinforcement Areas, in. ² /ft								"M," in.
	A _{s1}	A _{s2}	A _{s3}	A _{s4}	A _{s5}	A _{s6}	A _{s7}	A _{s8}	
0<2	0.29	0.62	0.31	0.22	0.22	0.22	0.22	0.22	
2<3	0.34	0.57	0.38	0.22					18
3-5	0.22	0.34	0.28	0.22					18
10	0.26	0.35	0.37	0.22					18
15	0.35	0.48	0.50	0.22					18
20	0.44	0.62	0.64	0.22					18
25	0.54	0.82	0.84	0.22					33

9 ft by 7 ft by 9 in.

Design Earth Cover, ft	Circumferential Reinforcement Areas, in. ² /ft								"M," in.
	A _{s1}	A _{s2}	A _{s3}	A _{s4}	A _{s5}	A _{s6}	A _{s7}	A _{s8}	
0<2	0.27	0.64	0.33	0.22	0.22	0.22	0.22	0.22	
2<3	0.31	0.60	0.41	0.22					18
3-5	0.22	0.35	0.30	0.22					18
10	0.24	0.37	0.39	0.22					18
15	0.32	0.50	0.53	0.22					18
20	0.41	0.65	0.67	0.22					18
25	0.50	0.87	0.92	0.22					33

9 ft by 8 ft by 9 in.

Design Earth Cover, ft	Circumferential Reinforcement Areas, in. ² /ft								"M," in.
	A _{s1}	A _{s2}	A _{s3}	A _{s4}	A _{s5}	A _{s6}	A _{s7}	A _{s8}	
0<2	0.28	0.65	0.35	0.22	0.23	0.22	0.22	0.22	
2<3	0.29	0.62	0.42	0.22					18
3-5	0.22	0.33	0.35	0.22					18
10	0.22	0.38	0.41	0.22					18
15	0.30	0.52	0.55	0.22					18
20	0.38	0.66	0.71	0.22					18
25	0.46	0.90	0.98	0.22					33

9 ft by 9 ft by 9 in.

Design Earth Cover, ft	Circumferential Reinforcement Areas, in. ² /ft								"M," in.
	A _{s1}	A _{s2}	A _{s3}	A _{s4}	A _{s5}	A _{s6}	A _{s7}	A _{s8}	
0<2	0.31	0.66	0.35	0.22	0.23	0.22	0.22	0.22	
2<3	0.27	0.63	0.43	0.22					18
3-5	0.22	0.35	0.35	0.22					18
10	0.22	0.39	0.43	0.22					18
15	0.28	0.53	0.57	0.22					18
20	0.36	0.68	0.74	0.22					18
25	0.44	0.93	1.03	0.22					33

10 ft by 5 ft by 10 in.

Design Earth Cover, ft	Circumferential Reinforcement Areas, in. ² /ft								"M," in.
	A _{s1}	A _{s2}	A _{s3}	A _{s4}	A _{s5}	A _{s6}	A _{s7}	A _{s8}	
0<2	0.33	0.57	0.27	0.24	0.24	0.24	0.24	0.24	
2<3	0.39	0.55	0.34	0.24					18
3-5	0.25	0.33	0.27	0.24					18
10	0.32	0.35	0.36	0.24					18
15	0.44	0.48	0.49	0.24					18
20	0.57	0.61	0.63	0.24					18
25	0.70	0.78	0.80	0.24					40

10 ft by 6 ft by 10 in.

Design Earth Cover, ft	Circumferential Reinforcement Areas, in. ² /ft								"M," in.
	A _{s1}	A _{s2}	A _{s3}	A _{s4}	A _{s5}	A _{s6}	A _{s7}	A _{s8}	
0<2	0.30	0.60	0.30	0.24	0.24	0.24	0.24	0.24	
2<3	0.37	0.58	0.37	0.24					18
3-5	0.24	0.35	0.29	0.24					18
10	0.30	0.37	0.39	0.24					18
15	0.40	0.51	0.53	0.24					18
20	0.52	0.66	0.68	0.24					18
25	0.64	0.86	0.91	0.24					35

10 ft by 7 ft by 10 in.

Design Earth Cover, ft	Circumferential Reinforcement Areas, in. ² /ft								"M," in.
	A _{s1}	A _{s2}	A _{s3}	A _{s4}	A _{s5}	A _{s6}	A _{s7}	A _{s8}	
0<2	0.28	0.62	0.32	0.24	0.24	0.24	0.24	0.24	
2<3	0.34	0.60	0.40	0.24					18
3-5	0.24	0.36	0.31	0.24					18
10	0.28	0.39	0.42	0.24					18
15	0.37	0.54	0.56	0.24					18
20	0.48	0.69	0.72	0.24					18
25	0.58	0.92	1.01	0.24					35

10 ft by 8 ft by 10 in.

Design Earth Cover, ft	Circumferential Reinforcement Areas, in. ² /ft								"M," in.
	A _{s1}	A _{s2}	A _{s3}	A _{s4}	A _{s5}	A _{s6}	A _{s7}	A _{s8}	
0<2	0.26	0.63	0.34	0.24	0.24	0.24	0.24	0.24	
2<3	0.31	0.62	0.42	0.24					18
3-5	0.24	0.37	0.34	0.24					18
10	0.26	0.41	0.44	0.24					18
15	0.35	0.56	0.59	0.24					18
20	0.44	0.72	0.75	0.24					18
25	0.54	0.97	1.09	0.24					35

10 ft by 9 ft by 10 in.

Design Earth Cover, ft	Circumferential Reinforcement Areas, in. ² /ft								"M," in.
	A _{s1}	A _{s2}	A _{s3}	A _{s4}	A _{s5}	A _{s6}	A _{s7}	A _{s8}	
0<2	0.29	0.65	0.35	0.24	0.24	0.24	0.24	0.24	
2<3	0.29	0.64	0.43	0.24					18
3-5	0.24	0.37	0.36	0.24					18
10	0.25	0.43	0.46	0.24					18
15	0.33	0.58	0.61	0.24					18
20	0.42	0.74	0.80	0.24					18
25	0.51	1.01	1.16	0.24					35

10 ft by 10 ft by 10 in.

Design Earth Cover, ft	Circumferential Reinforcement Areas, in. ² /ft								"M," in.
	A _{s1}	A _{s2}	A _{s3}	A _{s4}	A _{s5}	A _{s6}	A _{s7}	A _{s8}	
0<2	0.32	0.65	0.37	0.24	0.24	0.24	0.24	0.24	
2<3	0.27	0.65	0.44	0.24					18
3-5	0.24	0.37	0.38	0.24					18
10	0.24	0.44	0.48	0.24					18
15	0.32	0.59	0.64	0.24					18
20	0.40	0.76	0.83	0.24					18
25	0.49	1.03	1.21	0.24					35

11 ft by 4 ft by 11 in.

Design Earth Cover, ft	Circumferential Reinforcement Areas, in. ² /ft								"M," in.
	A _{s1}	A _{s2}	A _{s3}	A _{s4}	A _{s5}	A _{s6}	A _{s7}	A _{s8}	
0<2	0.38	0.52	0.26	0.26	0.26	0.26	0.26	0.26	
2<3	0.45	0.51	0.28	0.26					18
3-5	0.30	0.30	0.26	0.26					18
10	0.40	0.33	0.34	0.26					18
15	0.56	0.46	0.47	0.26					18
20	0.72	0.59	0.60	0.26					42
25	0.89	0.72	0.73	0.26					44

11 ft by 6 ft by 11 in.

Design Earth Cover, ft	Circumferential Reinforcement Areas, in. ² /ft								"M," in.
	A _{s1}	A _{s2}	A _{s3}	A _{s4}	A _{s5}	A _{s6}	A _{s7}	A _{s8}	
0<2	0.32	0.58	0.29	0.26	0.26	0.26	0.26	0.26	
2<3	0.38	0.58	0.36	0.26					18
3-5	0.26	0.35	0.30	0.26					18
10	0.34	0.39	0.41	0.26					18
15	0.47	0.54	0.56	0.26					18
20	0.60	0.69	0.71	0.26					18
25	0.73	0.90	0.97	0.26					36

11 ft by 8 ft by 11 in.

Design Earth Cover, ft	Circumferential Reinforcement Areas, in. ² /ft								"M," in.
	A _{s1}	A _{s2}	A _{s3}	A _{s4}	A _{s5}	A _{s6}	A _{s7}	A _{s8}	
0<2	0.27	0.62	0.33	0.26	0.26	0.26	0.26	0.26	
2<3	0.33	0.63	0.41	0.26					18
3-5	0.26	0.38	0.35	0.26					18
10	0.30	0.44	0.47	0.26					18
15	0.41	0.60	0.63	0.26					18
20	0.51	0.77	0.80	0.26					18
25	0.63	1.07	1.20	0.26					36

11 ft by 10 ft by 11 in.

Design Earth Cover, ft	Circumferential Reinforcement Areas, in. ² /ft								"M," in.
	A _{s1}	A _{s2}	A _{s3}	A _{s4}	A _{s5}	A _{s6}	A _{s7}	A _{s8}	
0<2	0.30	0.64	0.36	0.26	0.26	0.26	0.26	0.26	
2<3	0.29	0.65	0.43	0.26					18
3-5	0.26	0.38	0.39	0.26					18
10	0.28	0.47	0.51	0.26					18
15	0.37	0.64	0.68	0.26					18
20	0.46	0.82	0.89	0.26					18
25	0.56	1.16	1.35	0.26					36

11 ft by 11 ft by 11 in.

Design Earth Cover, ft	Circumferential Reinforcement Areas, in. ² /ft								"M," in.
	A _{s1}	A _{s2}	A _{s3}	A _{s4}	A _{s5}	A _{s6}	A _{s7}	A _{s8}	
0<2	0.34	0.64	0.39	0.26	0.26	0.26	0.26	0.26	
2<3	0.27	0.66	0.45	0.26					18
3-5	0.26	0.39	0.42	0.26					18
10	0.27	0.49	0.54	0.26					18
15	0.35	0.65	0.71	0.26					18
20	0.44	0.84	0.93	0.26					18
25	0.54	1.18	1.40	0.26					36

12 ft by 4 ft by 12 in.

Design Earth Cover, ft	Circumferential Reinforcement Areas, in. ² /ft								"M," in.
	A _{s1}	A _{s2}	A _{s3}	A _{s4}	A _{s5}	A _{s6}	A _{s7}	A _{s8}	
0<2	0.39	0.50	0.29	0.29	0.29	0.29	0.29	0.29	
2<3	0.48	0.51	0.29	0.29					18
5	0.33	0.30	0.29	0.29					18
10	0.46	0.35	0.36	0.29					18
15	0.63	0.48	0.49	0.29					18
20	0.81	0.62	0.63	0.29					18
25	1.00	0.76	0.77	0.29					46

12 ft by 6 ft by 12 in.

Design Earth Cover, ft	Circumferential Reinforcement Areas, in. ² /ft								"M," in.
	A _{s1}	A _{s2}	A _{s3}	A _{s4}	A _{s5}	A _{s6}	A _{s7}	A _{s8}	
0<2	0.33	0.57	0.29	0.29	0.29	0.29	0.29	0.29	
2<3	0.40	0.58	0.35	0.29					18
3-5	0.29	0.36	0.31	0.29					18
10	0.39	0.42	0.43	0.29					18
15	0.53	0.57	0.59	0.29					18
20	0.68	0.73	0.75	0.29					18
25	0.83	0.94	1.02	0.29					44

12 ft by 8 ft by 12 in.

Design Earth Cover, ft	Circumferential Reinforcement Areas, in. ² /ft								"M," in.
	A _{s1}	A _{s2}	A _{s3}	A _{s4}	A _{s5}	A _{s6}	A _{s7}	A _{s8}	
0<2	0.29	0.61	0.33	0.29	0.29	0.29	0.29	0.29	
2<3	0.35	0.63	0.40	0.29					18
3-5	0.29	0.39	0.36	0.29					18
10	0.35	0.46	0.49	0.29					18
15	0.46	0.63	0.66	0.29					18
20	0.59	0.81	0.84	0.29					18
25	0.72	1.15	1.29	0.29					38

12 ft by 10 ft by 12 in.

Design Earth Cover, ft	Circumferential Reinforcement Areas, in. ² /ft								"M," in.
	A _{s1}	A _{s2}	A _{s3}	A _{s4}	A _{s5}	A _{s6}	A _{s7}	A _{s8}	
0<2	0.29	0.63	0.36	0.29	0.29	0.29	0.29	0.29	
2<3	0.31	0.66	0.43	0.29					18
3-5	0.29	0.40	0.41	0.29					18
10	0.32	0.50	0.55	0.29					18
15	0.42	0.68	0.73	0.29					18
20	0.53	0.87	0.94	0.29					18
25	0.64	1.28	1.47	0.29					38

12 ft by 12 ft by 12 in.

Design Earth Cover, ft	Circumferential Reinforcement Areas, in. ² /ft								"M," in.
	A _{s1}	A _{s2}	A _{s3}	A _{s4}	A _{s5}	A _{s6}	A _{s7}	A _{s8}	
0<2	0.35	0.64	0.41	0.33	0.29	0.29	0.29	0.29	
2<3	0.29	0.67	0.48	0.29					18
3-5	0.29	0.42	0.45	0.29					18
10	0.29	0.53	0.59	0.29					18
15	0.39	0.71	0.78	0.29					18
20	0.48	0.93	1.03	0.29					18
25	0.59	1.34	1.61	0.29					38

TABLE 2 Design Requirements for Precast Concrete Box Sections Under Earth Dead and Interstate Live Load Conditions

NOTE 1—Design earth covers and reinforcement areas are based on the weight of a column of earth over the width of the box section as defined in Appendix X1.

NOTE 2—Concrete design strength 5000 psi.

NOTE 3—The design earth cover indicated is the height of fill above the top of the box section. Design requirements are based on the material and soil properties, loading data, and typical section as included in Appendix X1. For alternative or special designs, see 7.2.

NOTE 4—Design steel area in square inches per linear foot of box section at those locations which are indicated on the typical section included in Appendix X1.

NOTE 5—The top section designation, for example, 3 ft by 2 ft by 4 in. indicates (interior horizontal span in feet) by (interior vertical rise in feet) by (wall and slab thickness in inches).

NOTE 6—In accordance with the acceptance criteria in 7.2, the manufacturer may interpolate the steel area requirements for fill heights between noted increments or may submit independent designs.

3 ft by 2 ft by 4 in.									
Design Earth Cover, ft	Circumferential Reinforcement Areas, in. ² /ft								"M," in.
	A _{s1}	A _{s2}	A _{s3}	A _{s4}	A _{s5}	A _{s6}	A _{s7}	A _{s8}	
0<2 ^A	0.17	0.39	0.22	0.10	0.19	0.17	0.17	0.14	
2<3	0.15	0.27	0.27	0.10					18
3-5	0.10	0.12	0.12	0.10					18
10	0.10	0.10	0.10	0.10					18
15	0.10	0.14	0.14	0.10					18
20	0.12	0.18	0.18	0.10					18
25	0.14	0.22	0.22	0.10					18
30	0.17	0.26	0.26	0.10					18

^A Top slab 7 in., bottom slab 6 in.

3 ft by 3 ft by 4 in.									
Design Earth Cover, ft	Circumferential Reinforcement Areas, in. ² /ft								"M," in.
	A _{s1}	A _{s2}	A _{s3}	A _{s4}	A _{s5}	A _{s6}	A _{s7}	A _{s8}	
0<2 ^A	0.17	0.41	0.23	0.10	0.20	0.17	0.17	0.14	
2<3	0.11	0.31	0.31	0.10					18
3-5	0.10	0.14	0.14	0.10					18
10	0.10	0.11	0.11	0.10					18
15	0.10	0.15	0.16	0.10					18
20	0.10	0.19	0.20	0.10					18
25	0.10	0.24	0.24	0.10					18
30	0.12	0.28	0.29	0.10					18

^A Top slab 7 in., bottom slab 6 in.

4 ft by 2 ft by 5 in.									
Design Earth Cover, ft	Circumferential Reinforcement Areas, in. ² /ft								"M," in.
	A _{s1}	A _{s2}	A _{s3}	A _{s4}	A _{s5}	A _{s6}	A _{s7}	A _{s8}	
0<2 ^A	0.18	0.42	0.22	0.12	0.21	0.18	0.18	0.14	
2<3	0.24	0.29	0.25	0.12					18
3-5	0.12	0.14	0.14	0.12					18
10	0.12	0.12	0.12	0.12					18
15	0.15	0.17	0.17	0.12					18
20	0.19	0.21	0.21	0.12					18
25	0.24	0.26	0.26	0.12					18
30	0.29	0.31	0.31	0.12					18

^A Top slab 8 in., bottom slab 6 in.

4 ft by 3 ft by 5 in.									
Design Earth Cover, ft	Circumferential Reinforcement Areas, in. ² /ft								"M," in.
	A _{s1}	A _{s2}	A _{s3}	A _{s4}	A _{s5}	A _{s6}	A _{s7}	A _{s8}	
0<2 ^A	0.18	0.46	0.25	0.12	0.23	0.18	0.18	0.14	
2<3	0.20	0.35	0.31	0.12					18
3-5	0.12	0.17	0.17	0.12					18
10	0.12	0.14	0.14	0.12					18

15	0.12	0.19	0.20	0.12					18
20	0.15	0.25	0.25	0.12					18
25	0.18	0.30	0.31	0.12					18
30	0.21	0.36	0.36	0.12					18

^A Top slab 8 in., bottom slab 6 in.

4 ft by 4 ft by 5 in.									
Design Earth Cover, ft	Circumferential Reinforcement Areas, in. ² /ft								"M," in.
	A _{s1}	A _{s2}	A _{s3}	A _{s4}	A _{s5}	A _{s6}	A _{s7}	A _{s8}	
0<2 ^A	0.18	0.48	0.27	0.12	0.24	0.18	0.18	0.14	
2<3	0.16	0.38	0.34	0.12					18
3-5	0.12	0.18	0.18	0.12					18
10	0.12	0.15	0.16	0.12					18
15	0.12	0.20	0.21	0.12					18
20	0.12	0.26	0.27	0.12					18
25	0.15	0.32	0.33	0.12					18
30	0.18	0.38	0.39	0.12					18

^A Top slab 8 in., bottom slab 6 in.

5 ft by 3 ft by 6 in.									
Design Earth Cover, ft	Circumferential Reinforcement Areas, in. ² /ft								"M," in.
	A _{s1}	A _{s2}	A _{s3}	A _{s4}	A _{s5}	A _{s6}	A _{s7}	A _{s8}	
0<2 ^A	0.20	0.47	0.30	0.14	0.22	0.19	0.19	0.17	
2<3	0.26	0.36	0.28	0.14					18
3-5	0.14	0.19	0.19	0.14					18
10	0.14	0.16	0.17	0.14					18
15	0.17	0.22	0.23	0.14					18
20	0.22	0.29	0.29	0.14					18
25	0.27	0.35	0.36	0.14					18
30	0.32	0.42	0.43	0.14					18

^A Top slab 8 in., bottom slab 7 in.

5 ft by 4 ft by 6 in.									
Design Earth Cover, ft	Circumferential Reinforcement Areas, in. ² /ft								"M," in.
	A _{s1}	A _{s2}	A _{s3}	A _{s4}	A _{s5}	A _{s6}	A _{s7}	A _{s8}	
0<2 ^A	0.19	0.50	0.34	0.14	0.24	0.19	0.19	0.17	
2<3	0.22	0.41	0.33	0.14					18
3-5	0.14	0.21	0.21	0.14					18
10	0.14	0.18	0.19	0.14					18
15	0.14	0.24	0.25	0.14					18
20	0.18	0.31	0.32	0.14					18
25	0.22	0.38	0.39	0.14					18
30	0.26	0.46	0.47	0.14					18

^A Top slab 8 in., bottom slab 7 in.

5 ft by 5 ft by 6 in.									
Design Earth Cover, ft	Circumferential Reinforcement Areas, in. ² /ft								"M," in.
	A _{s1}	A _{s2}	A _{s3}	A _{s4}	A _{s5}	A _{s6}	A _{s7}	A _{s8}	
0<2 ^A	0.19	0.52	0.36	0.14	0.24	0.19	0.19	0.17	
2<3	0.19	0.43	0.35	0.14					18
3-5	0.14	0.22	0.22	0.14					18
10	0.14	0.19	0.20	0.14					18
15	0.14	0.26	0.27	0.14					18
20	0.16	0.33	0.34	0.14					18
25	0.19	0.40	0.41	0.14					18
30	0.23	0.48	0.49	0.14					18

^A Top slab 8 in., bottom slab 7 in.

6 ft by 3 ft by 7 in.									
Design Earth Cover, ft	Circumferential Reinforcement Areas, in. ² /ft								"M," in.
	A _{s1}	A _{s2}	A _{s3}	A _{s4}	A _{s5}	A _{s6}	A _{s7}	A _{s8}	
0<2 ^A	0.25	0.48	0.32	0.17	0.21	0.19	0.19	0.17	
2<3	0.30	0.38	0.26	0.17					18
3-5	0.17	0.20	0.17	0.17					18
10	0.17	0.18	0.19	0.17					18
15	0.23	0.25	0.26	0.17					18

20	0.29	0.32	0.33	0.17	18
25	0.36	0.40	0.40	0.17	18
30	0.44	0.47	0.48	0.17	29

^A Top slab 8 in.

6 ft by 4 ft by 7 in.

Design Earth Cover, ft	Circumferential Reinforcement Areas, in. ² /ft								"M," in.
	A _{s1}	A _{s2}	A _{s3}	A _{s4}	A _{s5}	A _{s6}	A _{s7}	A _{s8}	
0<2 ^A	0.22	0.52	0.36	0.17	0.22	0.19	0.19	0.17	
2<3	0.26	0.42	0.31	0.17					18
3-5	0.17	0.23	0.21	0.17					18
10	0.17	0.21	0.21	0.17					18
15	0.20	0.28	0.29	0.17					18
20	0.25	0.36	0.37	0.17					18
25	0.30	0.44	0.45	0.17					18
30	0.36	0.53	0.53	0.17					18

^A Top slab 8 in.

6 ft by 5 ft by 7 in.

Design Earth Cover, ft	Circumferential Reinforcement Areas, in. ² /ft								"M," in.
	A _{s1}	A _{s2}	A _{s3}	A _{s4}	A _{s5}	A _{s6}	A _{s7}	A _{s8}	
0<2 ^A	0.19	0.55	0.39	0.17	0.24	0.19	0.19	0.17	
2<3	0.23	0.45	0.34	0.17					18
3-5	0.17	0.24	0.22	0.17					18
10	0.17	0.22	0.23	0.17					18
15	0.17	0.30	0.31	0.17					18
20	0.22	0.38	0.39	0.17					18
25	0.26	0.47	0.48	0.17					18
30	0.31	0.56	0.58	0.17					18

^A Top slab 8 in.

6 ft by 6 ft by 7 in.

Design Earth Cover, ft	Circumferential Reinforcement Areas, in. ² /ft								"M," in.
	A _{s1}	A _{s2}	A _{s3}	A _{s4}	A _{s5}	A _{s6}	A _{s7}	A _{s8}	
0<2 ^A	0.19	0.57	0.41	0.17	0.25	0.19	0.19	0.17	
2<3	0.21	0.48	0.36	0.17					18
3-5	0.17	0.25	0.23	0.17					18
10	0.17	0.23	0.25	0.17					18
15	0.17	0.31	0.33	0.17					18
20	0.19	0.40	0.41	0.17					18
25	0.24	0.48	0.50	0.17					18
30	0.28	0.58	0.61	0.17					18

^A Top slab 8 in.

7 ft by 4 ft by 8 in.

Design Earth Cover, ft	Circumferential Reinforcement Areas, in. ² /ft								"M," in.
	A _{s1}	A _{s2}	A _{s3}	A _{s4}	A _{s5}	A _{s6}	A _{s7}	A _{s8}	
0<2	0.27	0.53	0.36	0.19	0.21	0.19	0.19	0.19	
2<3	0.31	0.43	0.42	0.19					18
3-5	0.19	0.24	0.19	0.19					18
10	0.19	0.23	0.24	0.19					18
15	0.25	0.31	0.32	0.19					18
20	0.32	0.40	0.41	0.19					18
25	0.40	0.49	0.50	0.19					18
30	0.47	0.58	0.59	0.19					18

7 ft by 5 ft by 8 in.

Design Earth Cover, ft	Circumferential Reinforcement Areas, in. ² /ft								"M," in.
	A _{s1}	A _{s2}	A _{s3}	A _{s4}	A _{s5}	A _{s6}	A _{s7}	A _{s8}	
0<2	0.23	0.56	0.39	0.19	0.19	0.19	0.19	0.19	
2<3	0.27	0.47	0.46	0.19					18
3-5	0.19	0.26	0.22	0.19					18
10	0.19	0.25	0.26	0.19					18
15	0.22	0.34	0.35	0.19					18
20	0.28	0.43	0.44	0.19					18
25	0.34	0.53	0.54	0.19					18
30	0.41	0.64	0.66	0.19					18

7 ft by 6 ft by 8 in.

Design Earth Cover, ft	Circumferential Reinforcement Areas, in. ² /ft								"M," in.
	A _{s1}	A _{s2}	A _{s3}	A _{s4}	A _{s5}	A _{s6}	A _{s7}	A _{s8}	
0<2	0.21	0.58	0.42	0.19	0.23	0.19	0.19	0.19	
2<3	0.24	0.49	0.49	0.19					18
3-5	0.19	0.27	0.23	0.19					18
10	0.19	0.26	0.28	0.19					18
15	0.20	0.36	0.37	0.19					18
20	0.25	0.45	0.47	0.19					18
25	0.31	0.55	0.57	0.19					18
30	0.37	0.69	0.74	0.19					18

7 ft by 7 ft by 8 in.

Design Earth Cover, ft	Circumferential Reinforcement Areas, in. ² /ft								"M," in.
	A _{s1}	A _{s2}	A _{s3}	A _{s4}	A _{s5}	A _{s6}	A _{s7}	A _{s8}	
0<2	0.23	0.60	0.44	0.19	0.24	0.19	0.19	0.19	
2<3	0.21	0.51	0.52	0.19					18
3-5	0.19	0.28	0.24	0.19					18
10	0.19	0.27	0.29	0.19					18
15	0.19	0.37	0.39	0.19					18
20	0.23	0.47	0.49	0.19					18
25	0.28	0.57	0.59	0.19					18
30	0.33	0.71	0.78	0.19					18

8 ft by 4 ft by 8 in.

Design Earth Cover, ft	Circumferential Reinforcement Areas, in. ² /ft								"M," in.
	A _{s1}	A _{s2}	A _{s3}	A _{s4}	A _{s5}	A _{s6}	A _{s7}	A _{s8}	
0<2	0.35	0.58	0.39	0.19	0.21	0.19	0.19	0.19	
2<3	0.43	0.50	0.47	0.19					37
3-5	0.23	0.29	0.25	0.19					18
10	0.27	0.29	0.30	0.19					18
15	0.36	0.39	0.40	0.19					18
20	0.46	0.51	0.52	0.19					18
25	0.57	0.63	0.65	0.19					36

8 ft by 5 ft by 8 in.

Design Earth Cover, ft	Circumferential Reinforcement Areas, in. ² /ft								"M," in.
	A _{s1}	A _{s2}	A _{s3}	A _{s4}	A _{s5}	A _{s6}	A _{s7}	A _{s8}	
0<2	0.31	0.62	0.43	0.19	0.23	0.19	0.19	0.19	
2<3	0.38	0.55	0.51	0.19					18
3-5	0.20	0.31	0.27	0.19					18
10	0.24	0.31	0.32	0.19					18
15	0.32	0.43	0.44	0.19					18
20	0.41	0.55	0.56	0.19					18
25	0.51	0.71	0.73	0.19					31

8 ft by 6 ft by 8 in.

Design Earth Cover, ft	Circumferential Reinforcement Areas, in. ² /ft								"M," in.
	A _{s1}	A _{s2}	A _{s3}	A _{s4}	A _{s5}	A _{s6}	A _{s7}	A _{s8}	
0<2	0.28	0.64	0.46	0.19	0.24	0.19	0.19	0.19	
2<3	0.34	0.59	0.55	0.19					18
3-5	0.19	0.32	0.28	0.19					18
10	0.22	0.33	0.35	0.19					18
15	0.29	0.45	0.47	0.19					18
20	0.37	0.58	0.60	0.19					18
25	0.46	0.77	0.80	0.19					31

8 ft by 7 ft by 8 in.

Design Earth Cover, ft	Circumferential Reinforcement Areas, in. ² /ft								"M," in.
	A _{s1}	A _{s2}	A _{s3}	A _{s4}	A _{s5}	A _{s6}	A _{s7}	A _{s8}	
0<2	0.28	0.66	0.48	0.19	0.24	0.19	0.19	0.19	
2<3	0.30	0.61	0.58	0.19					18
3-5	0.19	0.33	0.30	0.19					18
10	0.20	0.35	0.37	0.19					18
15	0.27	0.47	0.49	0.19					18
20	0.34	0.60	0.63	0.19					18
25	0.42	0.81	0.85	0.19					31

8 ft by 8 ft by 8 in.

Design Earth Cover, ft	Circumferential Reinforcement Areas, in. ² /ft								"M," in.
	A _{s1}	A _{s2}	A _{s3}	A _{s4}	A _{s5}	A _{s6}	A _{s7}	A _{s8}	
0<2	0.30	0.68	0.50	0.24	0.25	0.19	0.19	0.19	
2<3	0.28	0.63	0.60	0.19					18
3-5	0.19	0.34	0.32	0.19					18
10	0.19	0.36	0.39	0.19					18
15	0.26	0.49	0.51	0.19					18
20	0.32	0.62	0.66	0.19					18
25	0.39	0.83	0.88	0.19					31

9 ft by 5 ft by 9 in.

Design Earth Cover, ft	Circumferential Reinforcement Areas, in. ² /ft								"M," in.
	A _{s1}	A _{s2}	A _{s3}	A _{s4}	A _{s5}	A _{s6}	A _{s7}	A _{s8}	
0<2	0.37	0.59	0.40	0.22	0.22	0.22	0.22	0.22	
2<3	0.43	0.57	0.49	0.22					18
3-5	0.25	0.34	0.33	0.22					18
10	0.28	0.33	0.35	0.22					18
15	0.38	0.46	0.47	0.22					18
20	0.49	0.59	0.60	0.22					18
25	0.60	0.75	0.77	0.22					33

9 ft by 6 ft by 9 in.

Design Earth Cover, ft	Circumferential Reinforcement Areas, in. ² /ft								"M," in.
	A _{s1}	A _{s2}	A _{s3}	A _{s4}	A _{s5}	A _{s6}	A _{s7}	A _{s8}	
0<2	0.34	0.62	0.44	0.22	0.22	0.22	0.22	0.22	
2<3	0.39	0.60	0.53	0.22					18
3-5	0.22	0.35	0.35	0.22					18
10	0.26	0.36	0.37	0.22					18
15	0.35	0.49	0.50	0.22					18
20	0.45	0.62	0.64	0.22					18
25	0.55	0.82	0.85	0.22					33

9 ft by 7 ft by 9 in.

Design Earth Cover, ft	Circumferential Reinforcement Areas, in. ² /ft								"M," in.
	A _{s1}	A _{s2}	A _{s3}	A _{s4}	A _{s5}	A _{s6}	A _{s7}	A _{s8}	
0<2	0.31	0.64	0.46	0.22	0.22	0.22	0.22	0.22	
2<3	0.35	0.64	0.56	0.22					18
3-5	0.22	0.37	0.37	0.22					18
10	0.24	0.38	0.40	0.22					18
15	0.32	0.51	0.53	0.22					18
20	0.41	0.65	0.68	0.22					18
25	0.50	0.87	0.93	0.22					33

9 ft by 8 ft by 9 in.

Design Earth Cover, ft	Circumferential Reinforcement Areas, in. ² /ft								"M," in.
	A _{s1}	A _{s2}	A _{s3}	A _{s4}	A _{s5}	A _{s6}	A _{s7}	A _{s8}	
0<2	0.29	0.65	0.48	0.22	0.22	0.22	0.22	0.22	
2<3	0.33	0.66	0.59	0.22					18
3-5	0.22	0.38	0.38	0.22					18
10	0.23	0.39	0.42	0.22					18
15	0.30	0.53	0.56	0.22					18
20	0.38	0.67	0.71	0.22					18
25	0.47	0.91	1.00	0.22					33

9 ft by 9 ft by 9 in.

Design Earth Cover, ft	Circumferential Reinforcement Areas, in. ² /ft								"M," in.
	A _{s1}	A _{s2}	A _{s3}	A _{s4}	A _{s5}	A _{s6}	A _{s7}	A _{s8}	
0<2	0.31	0.66	0.50	0.26	0.22	0.22	0.22	0.22	
2<3	0.31	0.68	0.60	0.22					18
3-5	0.22	0.38	0.38	0.22					18
10	0.22	0.40	0.44	0.22					18
15	0.29	0.54	0.58	0.22					18
20	0.36	0.69	0.75	0.22					18
25	0.44	0.93	1.04	0.22					33

10 ft by 5 ft by 10 in.

Design Earth Cover, ft	Circumferential Reinforcement Areas, in. ² /ft								"M," in.
	A _{s1}	A _{s2}	A _{s3}	A _{s4}	A _{s5}	A _{s6}	A _{s7}	A _{s8}	
0<2	0.41	0.57	0.38	0.24	0.24	0.24	0.24	0.24	
2<3	0.48	0.58	0.47	0.24					18
3-5	0.28	0.35	0.33	0.24					18
10	0.33	0.35	0.37	0.24					18
15	0.45	0.48	0.50	0.24					18
20	0.57	0.62	0.63	0.24					18
25	0.71	0.78	0.80	0.24					40

10 ft by 6 ft by 10 in.

Design Earth Cover, ft	Circumferential Reinforcement Areas, in. ² /ft								"M," in.
	A _{s1}	A _{s2}	A _{s3}	A _{s4}	A _{s5}	A _{s6}	A _{s7}	A _{s8}	
0<2	0.37	0.60	0.42	0.24	0.24	0.24	0.24	0.24	
2<3	0.44	0.62	0.51	0.24					18
3-5	0.25	0.37	0.35	0.24					18
10	0.31	0.38	0.40	0.24					18
15	0.41	0.52	0.54	0.24					18
20	0.52	0.66	0.68	0.24					18
25	0.64	0.87	0.93	0.24					35

10 ft by 7 ft by 10 in.

Design Earth Cover, ft	Circumferential Reinforcement Areas, in. ² /ft								"M," in.
	A _{s1}	A _{s2}	A _{s3}	A _{s4}	A _{s5}	A _{s6}	A _{s7}	A _{s8}	
0<2	0.34	0.62	0.45	0.24	0.24	0.24	0.24	0.24	
2<3	0.40	0.65	0.55	0.24					18
3-5	0.24	0.39	0.37	0.24					18
10	0.29	0.40	0.43	0.24					18
15	0.38	0.55	0.57	0.24					18
20	0.48	0.70	0.72	0.24					18
25	0.59	0.93	1.03	0.24					35

10 ft by 8 ft by 10 in.

Design Earth Cover, ft	Circumferential Reinforcement Areas, in. ² /ft								"M," in.
	A _{s1}	A _{s2}	A _{s3}	A _{s4}	A _{s5}	A _{s6}	A _{s7}	A _{s8}	
0<2	0.32	0.63	0.47	0.24	0.24	0.24	0.24	0.24	
2<3	0.37	0.68	0.58	0.24					18
3-5	0.24	0.40	0.38	0.24					18
10	0.27	0.42	0.45	0.24					18
15	0.36	0.57	0.60	0.24					18
20	0.45	0.73	0.76	0.24					18
25	0.55	0.99	1.11	0.24					35

10 ft by 9 ft by 10 in.

Design Earth Cover, ft	Circumferential Reinforcement Areas, in. ² /ft								"M," in.
	A _{s1}	A _{s2}	A _{s3}	A _{s4}	A _{s5}	A _{s6}	A _{s7}	A _{s8}	
0<2	0.30	0.65	0.48	0.24	0.24	0.24	0.24	0.24	
2<3	0.35	0.70	0.60	0.24					18
3-5	0.24	0.40	0.39	0.24					18
10	0.26	0.44	0.47	0.24					18
15	0.34	0.59	0.62	0.24					18
20	0.42	0.75	0.81	0.24					18
25	0.51	1.03	1.18	0.24					35

10 ft by 10 ft by 10 in.

Design Earth Cover, ft	Circumferential Reinforcement Areas, in. ² /ft								"M," in.
	A _{s1}	A _{s2}	A _{s3}	A _{s4}	A _{s5}	A _{s6}	A _{s7}	A _{s8}	
0<2	0.32	0.65	0.50	0.28	0.24	0.24	0.24	0.24	
2<3	0.33	0.71	0.61	0.24					18
3-5	0.24	0.41	0.40	0.24					18
10	0.24	0.45	0.49	0.24					18
15	0.32	0.60	0.65	0.24					18
20	0.40	0.77	0.84	0.24					18
25	0.49	1.05	1.23	0.24					35

11 ft by 4 ft by 11 in.									
Design Earth Cover, ft	Circumferential Reinforcement Areas, in. ² /ft								"M," in.
	A _{s1}	A _{s2}	A _{s3}	A _{s4}	A _{s5}	A _{s6}	A _{s7}	A _{s8}	
0<2	0.45	0.52	0.32	0.26	0.26	0.26	0.26	0.26	
2<3	0.57	0.54	0.40	0.26					44
3-5	0.35	0.33	0.28	0.26					18
10	0.42	0.34	0.35	0.26					18
15	0.57	0.47	0.47	0.26					18
20	0.73	0.60	0.60	0.26					44
25	0.90	0.73	0.74	0.26					44

11 ft by 6 ft by 11 in.									
Design Earth Cover, ft	Circumferential Reinforcement Areas, in. ² /ft								"M," in.
	A _{s1}	A _{s2}	A _{s3}	A _{s4}	A _{s5}	A _{s6}	A _{s7}	A _{s8}	
0<2	0.40	0.58	0.40	0.26	0.26	0.26	0.26	0.26	
2<3	0.48	0.63	0.50	0.26					18
3-5	0.28	0.38	0.34	0.26					18
10	0.35	0.40	0.42	0.26					18
15	0.47	0.55	0.57	0.26					18
20	0.60	0.70	0.72	0.26					18
25	0.74	0.91	0.99	0.26					36

11 ft by 8 ft by 11 in.									
Design Earth Cover, ft	Circumferential Reinforcement Areas, in. ² /ft								"M," in.
	A _{s1}	A _{s2}	A _{s3}	A _{s4}	A _{s5}	A _{s6}	A _{s7}	A _{s8}	
0<2	0.34	0.62	0.45	0.26	0.26	0.26	0.26	0.26	
2<3	0.41	0.70	0.56	0.26					18
3-5	0.26	0.42	0.38	0.26					18
10	0.31	0.45	0.48	0.26					18
15	0.41	0.61	0.64	0.26					18
20	0.52	0.77	0.81	0.26					18
25	0.63	1.09	1.22	0.26					36

11 ft by 10 ft by 11 in.									
Design Earth Cover, ft	Circumferential Reinforcement Areas, in. ² /ft								"M," in.
	A _{s1}	A _{s2}	A _{s3}	A _{s4}	A _{s5}	A _{s6}	A _{s7}	A _{s8}	
0<2	0.30	0.64	0.49	0.26	0.26	0.26	0.26	0.26	
2<3	0.37	0.73	0.60	0.26					18
3-5	0.26	0.43	0.41	0.26					18
10	0.28	0.48	0.53	0.26					18
15	0.37	0.65	0.69	0.26					18
20	0.46	0.83	0.90	0.26					18
25	0.56	1.18	1.37	0.26					36

11 ft by 11 ft by 11 in.									
Design Earth Cover, ft	Circumferential Reinforcement Areas, in. ² /ft								"M," in.
	A _{s1}	A _{s2}	A _{s3}	A _{s4}	A _{s5}	A _{s6}	A _{s7}	A _{s8}	
0<2	0.34	0.64	0.49	0.26	0.26	0.26	0.26	0.26	
2<3	0.34	0.75	0.61	0.26					18
3-5	0.26	0.43	0.43	0.26					18
10	0.27	0.50	0.55	0.26					18
15	0.36	0.66	0.72	0.26					18
20	0.45	0.85	0.94	0.26					18
25	0.54	1.21	1.42	0.26					36

12 ft by 4 ft by 12 in.									
Design Earth Cover, ft	Circumferential Reinforcement Areas, in. ² /ft								"M," in.
	A _{s1}	A _{s2}	A _{s3}	A _{s4}	A _{s5}	A _{s6}	A _{s7}	A _{s8}	
0<2	0.47	0.50	0.36	0.29	0.29	0.29	0.29	0.29	
2<3	0.61	0.55	0.38	0.29					18
3-5	0.39	0.33	0.31	0.29					18
10	0.47	0.36	0.37	0.29					18
15	0.64	0.49	0.50	0.29					18
20	0.82	0.62	0.63	0.29					46
25	1.01	0.76	0.77	0.29					46

12 ft by 6 ft by 12 in.									
Design Earth Cover, ft	Circumferential Reinforcement Areas, in. ² /ft								"M," in.
	A _{s1}	A _{s2}	A _{s3}	A _{s4}	A _{s5}	A _{s6}	A _{s7}	A _{s8}	
0<2	0.42	0.57	0.39	0.29	0.29	0.29	0.29	0.29	
2<3	0.52	0.64	0.48	0.29					18
3-5	0.32	0.40	0.36	0.29					18
10	0.40	0.43	0.44	0.29					18
15	0.54	0.58	0.60	0.29					18
20	0.69	0.74	0.76	0.29					18
25	0.84	0.96	1.05	0.29					44

12 ft by 8 ft by 12 in.									
Design Earth Cover, ft	Circumferential Reinforcement Areas, in. ² /ft								"M," in.
	A _{s1}	A _{s2}	A _{s3}	A _{s4}	A _{s5}	A _{s6}	A _{s7}	A _{s8}	
0<2	0.37	0.61	0.44	0.29	0.29	0.29	0.29	0.29	
2<3	0.45	0.71	0.55	0.29					18
3-5	0.29	0.43	0.40	0.29					18
10	0.36	0.48	0.51	0.29					18
15	0.47	0.64	0.67	0.29					18
20	0.59	0.82	0.85	0.29					18
25	0.72	1.18	1.31	0.29					38

12 ft by 10 ft by 12 in.									
Design Earth Cover, ft	Circumferential Reinforcement Areas, in. ² /ft								"M," in.
	A _{s1}	A _{s2}	A _{s3}	A _{s4}	A _{s5}	A _{s6}	A _{s7}	A _{s8}	
0<2	0.32	0.63	0.48	0.29	0.29	0.29	0.29	0.29	
2<3	0.40	0.75	0.60	0.29					18
3-5	0.29	0.45	0.45	0.29					18
10	0.32	0.52	0.56	0.29					18
15	0.42	0.69	0.74	0.29					18
20	0.53	0.88	0.95	0.29					18
25	0.64	1.30	1.50	0.29					38

12 ft by 12 ft by 12 in.									
Design Earth Cover, ft	Circumferential Reinforcement Areas, in. ² /ft								"M," in.
	A _{s1}	A _{s2}	A _{s3}	A _{s4}	A _{s5}	A _{s6}	A _{s7}	A _{s8}	
0<2	0.35	0.64	0.50	0.33	0.29	0.29	0.29	0.29	
2<3	0.36	0.78	0.62	0.29					18
3-5	0.29	0.45	0.50	0.29					18
10	0.30	0.55	0.61	0.29					18
15	0.39	0.73	0.79	0.29					18
20	0.49	0.94	1.04	0.29					18
25	0.59	1.36	1.63	0.29					38

5. Basis of Acceptance

5.1 Acceptability of the box sections produced in accordance with Section 7 shall be determined by the results of the concrete compressive strength tests described in Section 10, by the material requirements described in Section 6, and by inspection of the finished box sections.

5.2 Box sections shall be considered ready for acceptance when they conform to the requirements of this specification.

6. Material

6.1 *Reinforced Concrete*—The reinforced concrete shall consist of cementitious materials, mineral aggregates and water, in which steel has been embedded in such a manner that the steel and concrete act together.

6.2 *Cementitious Materials:*

6.2.1 *Cement*—Cement shall conform to the requirements for portland cement of Specification C 150 or shall be portland blast-furnace slag cement or portland-pozzolan cement conforming to the requirements of Specification C 595, except that the pozzolan constituent in the Type IP portland-pozzolan cement shall be fly ash.

6.2.2 *Fly Ash*—Fly ash shall conform to the requirements of Specification C 618, Class F or Class C.

6.2.3 *Allowable Combinations of Cementitious Materials*—The combination of cementitious materials used in concrete shall be one of the following:

- 6.2.3.1 Portland cement,
- 6.2.3.2 Portland blast furnace slag cement,
- 6.2.3.3 Portland pozzolan cement, or
- 6.2.3.4 A combination of portland cement and fly ash.

6.3 *Aggregates*—Aggregates shall conform to Specification C 33, except that the requirements for gradation shall not apply.

6.4 *Admixtures and Blends*—Admixtures and blends shall be allowed to be used with the approval of the purchaser.

6.5 *Steel Reinforcement*—Reinforcement shall consist of welded wire fabric conforming to Specifications A 185 or A 497. Circumferential reinforcement areas in Tables 1 and 2 are based solely on the use of welded wire fabric, refer to 11.6 if alternate steel designs utilizing steel bars, Grade 60, in conjunction with or in lieu of welded wire fabric are to be submitted for the owner's approval. Longitudinal distribution reinforcement shall be allowed to consist of welded wire fabric or deformed billet-steel bars conforming to Specification A 615, Grade 60.

7. Design

7.1 *Design Tables*—The box section dimensions, compressive strength of the concrete, and reinforcement details shall be as prescribed in Table 1 or Table 2 and Figs. 1-4, subject to the provisions of Section 11. Table 1 sections are designed for combined earth dead load and AASHTO HS20 live load conditions. Table 2 sections are designed for combined earth dead load and interstate live load conditions when the interstate live loading exceeds the HS20 live loading. Criteria used to develop Tables 1 and 2 are given in Appendix X1.

NOTE 2—The tabular designs in this specification were prepared according to AASHTO Standard Specifications for Highway Bridges, 1997 Edition.

7.2 *Modified and Special Designs*—The manufacturer shall be allowed to request approval by the purchaser of modified designs which differ from the designs in Section 7; or special designs for sizes and loads other than those shown in Tables 1 and 2.

NOTE 3—Construction procedures, such as heavy equipment movement or stockpiling of material over or adjacent to a box structure, can induce higher loads than those used for the structure's final design. These construction loads are approved as long as the steel areas in the box are larger than those required for the construction procedures.

7.3 *Placement of Reinforcement*—The cover of concrete over the circumferential reinforcement shall be 1 in., subject to the provisions of Section 11. The inside circumferential reinforcement shall extend into the tongue portion of the joint and the outside circumferential reinforcement shall extend into the groove portion of the joint. The clear distance of the end circumferential wires shall be not less than 1/2 in. nor more than 2 in. from the ends of the box section. Reinforcement shall be assembled utilizing any combination of single or multiple layers of welded-wire fabric. A common reinforcement unit may be utilized for both A_{s2} or (or A_{s3}) and A_{s4} , and also for both A_{s7} (or A_{s8}) and A_{s1} , with the largest area requirement governing, bending the reinforcement 90° at the corners and waiving the extension requirements of Fig. 3 (see Fig. 5). The welded-wire fabric shall be composed of circumferential and longitudinal wires meeting the spacing requirements of 7.4 and shall contain sufficient longitudinal wires extending through the box section to maintain the shape and position of reinforcement. Longitudinal distribution reinforcement may be welded-wire fabric or deformed billet-steel bars and shall meet the spacing requirements of 7.4. The ends of the longitudinal distribution reinforcement shall not be more than 2 in. from the

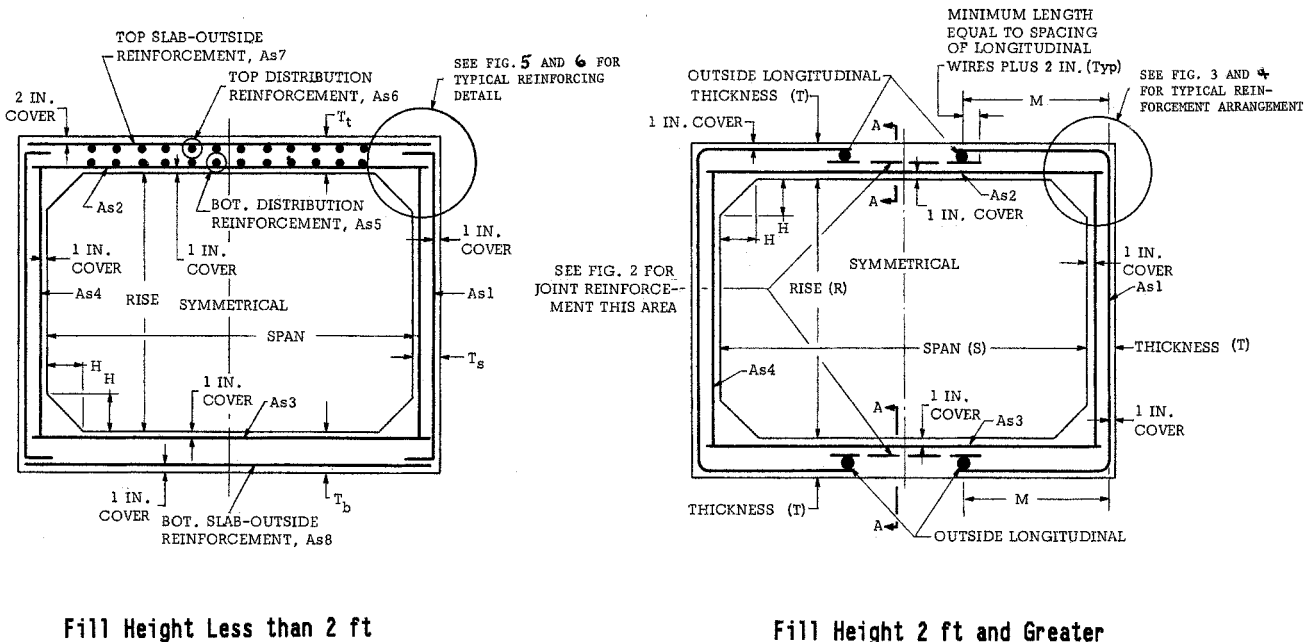


FIG. 1 Typical Box Sections

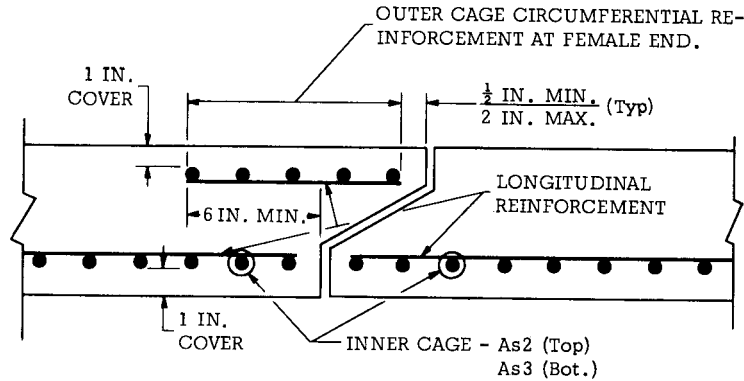


FIG. 2 Section A-A Top and Bottom Slab Joint Reinforcement

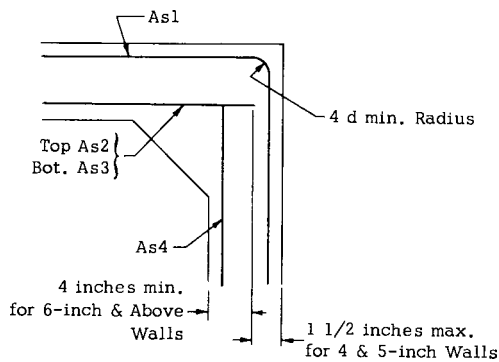


FIG. 3 Detail Inner Reinforcement

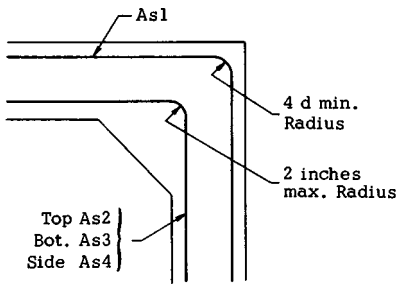


FIG. 4 Detail Option (see Fig. 3)

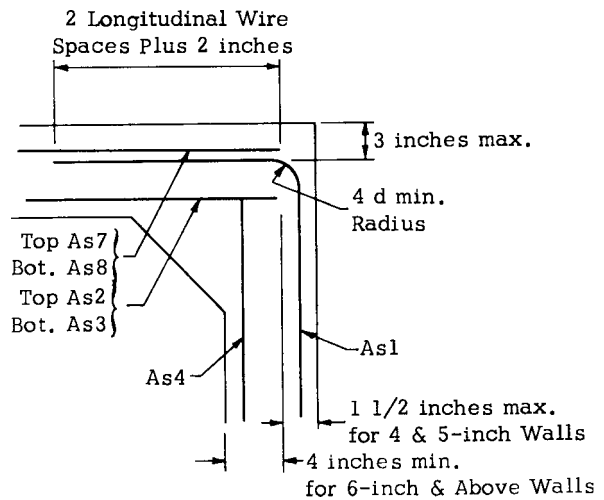


FIG. 5 Detailed Reinforcement Arrangement

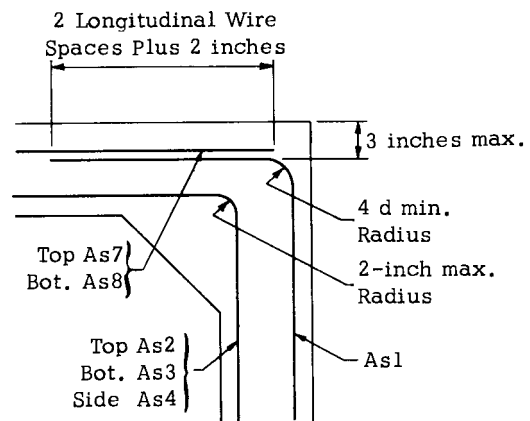


FIG. 6 Detail Option

ends of the box section. The exposure of the ends of longitudinals, stirrups, and spacers used to position the reinforcement shall not be a cause for rejection.

7.4 *Laps, Welds, and Spacing*—Splices in the circumferential reinforcement shall be made by lapping. The overlap measured between the outermost longitudinal wires of each fabric sheet shall not be less than the spacing of the longitudinal wires plus 2 in. but not less than 10 in. If A_{s1} is extended and connected, welded splices shall be allowed in the connection. When used, A_{s7} and A_{s8} shall be lapped with A_{s1} as shown in Fig. 5 or Fig. 6 and shall be allowed to be connected by welding. A_{s4} shall be allowed to be lapped and welded at any location or connected by welding at the corners to A_{s2} and A_{s3} . The spacing center to center of the circumferential wires shall not be less than 2 in. nor more than 4 in. The spacing center to center of the longitudinal wires shall not be more than 8 in.

8. Joints

8.1 The precast reinforced concrete box sections shall be

produced with tongue and groove ends. The ends shall be of such design and the ends of the box sections so formed that the sections can be laid together to make a continuous line of box sections compatible with the permissible variations given in Section 11.

8.2 Outer cage circumferential reinforcement as shown in Figs. 1 and 2 shall be placed in the top and bottom slabs at the groove portion of the joint when A_{s1} is not continuous over the span. The minimum area of such reinforcement in square

inches per linear foot of box section length shall be the same as the areas specified for A_{s4} in Tables 1 and 2.

9. Manufacture

9.1 *Mixture*—The aggregates shall be sized, graded, proportioned, and mixed with such proportions of cementitious materials and water as will produce a homogeneous concrete mixture of such quality that the pipe will conform to the test and design requirements of this specification. All concrete shall have a water-cementitious materials ratio not exceeding 0.53 by weight. Cementitious materials shall be as specified in 6.2 and shall be added to the mix in a proportion not less than 470 lb/yd³ unless mix designs with a lower cementitious materials content demonstrate that the quality and performance of the pipe meet the requirements of this specification.

9.2 *Curing*—The box sections shall be cured for a sufficient length of time so that the concrete will develop the specified compressive strength in 28 days or less. Any one of the following methods of curing or combinations thereof shall be allowed to be used:

9.2.1 *Steam Curing*—The box sections shall be allowed to be low pressure, steam-cured by a system that will maintain a moist atmosphere.

9.2.2 *Water Curing*—The box sections shall be allowed to be water-cured by any method that will keep the sections moist.

9.2.3 *Membrane Curing*—A sealing membrane conforming to the requirements of Specification C 309 shall be allowed to be applied and shall be left intact until the required concrete compressive strength is attained. The concrete temperature at the time of application shall be within 10°F of the atmospheric temperature. All surfaces shall be kept moist prior to the application of the compounds and shall be damp when the compound is applied.

9.3 *Forms*—The forms used in manufacture shall be sufficiently rigid and accurate to maintain the box section dimensions within the permissible variations given in Section 11. All casting surfaces shall be of smooth nonporous material.

9.4 *Handling*—Handling devices or holes shall be permitted in each box section for the purpose of handling and laying.

10. Physical Requirements

10.1 *Type of Test Specimen*—Compression tests for determining concrete compressive strength shall be allowed to be made on either standard rodded concrete cylinders or concrete cylinders compacted and cured in like manner as the box sections, or on cores drilled from the box section.

10.2 *Compression Testing of Cylinders:*

10.2.1 Cylinders shall be obtained and tested for compressive strength in accordance with the provisions of Practice C 31/C 31M and Test Method C 39, except that the cylinders may be prepared by methods comparable to those used to consolidate and cure the concrete in the actual box section manufactured. Cylindrical specimens of sizes other than 6 by 12 in. may be used provided all other requirements of Practice C 31/C 31M are met. If the concrete is of a consistency too stiff for compaction by rodding or internal vibration, the alternate method described in Section II of Test Methods C 497 may be used. Cylinders shall be exposed to the same curing conditions

as the manufactured box sections and shall remain with the sections until tested.

10.2.2 Prepare not less than three test cylinders from each concrete mix used within a group (one day's production) of box sections.

10.2.3 *Acceptability on the Basis of Cylinder Test Results:*

10.2.3.1 When the average compressive strength of all cylinders tested is equal to or greater than the design concrete strength, not more than 10 % of the cylinders tested have a compressive strength less than the design concrete strength, and no cylinder tested has a compressive strength less than 80 % of the design concrete strength, the lot shall be accepted.

10.2.3.2 When the compressive strength of the cylinders tested does not conform to the acceptance criteria stated in 10.2.3.1, the acceptability of the lot shall be determined in accordance with the provisions of 10.3.

10.3 *Compression Testing of Cores:*

10.3.1 Cores shall be obtained and tested for compressive strength in accordance with the provisions of Test Methods C 497.

10.3.2 One core shall be cut from a section selected at random from each group of 15 box sections or fraction thereof, of a single size from each continuous production run.

10.3.3 *Acceptability by Core Tests:*

10.3.3.1 The compressive strength of the concrete in each group of box sections defined in 10.1 is acceptable when concrete compressive strength of the core is equal to or greater than 80 % of the specified strength of the concrete.

10.3.3.2 When the compressive strength of the core tested is less than 80 % of the design concrete strength, the box section from which that core was taken may be recored. When the compressive strength of the recore is equal to or greater than 80 % of the specified strength of the concrete, the compressive strength of the concrete in that group of box sections is acceptable.

10.3.3.3 When the compressive strength of any recore is less than 80 % of the specified strength of the concrete, the box section from which the core was taken shall be rejected. Two box sections from the remainder of the group shall be selected at random and one core shall be taken from each. If the compressive strength of either of the two cores tested is less than 80 % of the specified strength of the concrete, the remainder of the group of box sections shall be rejected, or, at the option of the manufacturer, each box section of the remainder of the group shall be cored and accepted individually, and any of these box sections that have cores with less than 80 % of the specified strength of the concrete shall be rejected.

10.4 *Plugging Core Holes*—The core holes shall be plugged and sealed by the manufacturer in a manner such that the box section will meet all of the test requirements of this specification. Box sections so sealed shall be considered as satisfactory for use.

10.5 *Test Equipment*—Every manufacturer furnishing box sections under this specification shall furnish all facilities and personnel necessary to carry out the tests required.

11. Permissible Variations

11.1 *Internal Dimensions*—The internal dimension shall not

vary more than 1 % from the design dimensions. The haunch dimensions shall not vary more than $\frac{1}{4}$ in. from the design dimensions.

11.2 *Slab and Wall Thickness*—The slab and wall thickness shall not be less than that shown in the design by more than 5 % or $\frac{3}{16}$ in., whichever is greater. A thickness more than that required in the design shall not be a cause for rejection.

11.3 *Length of Opposite Surfaces*—Variations in laying lengths of two opposite surfaces of the box section shall not be more than $\frac{1}{8}$ in./ft of internal span, with a maximum of $\frac{5}{8}$ in. for all sizes through 7 ft internal span, and a maximum of $\frac{3}{4}$ in. for internal spans greater than 7 ft, except where beveled ends for laying of curves are specified by the purchaser.

11.4 *Length of Section*—The underrun in length of a section shall not be more than $\frac{1}{8}$ in./ft of length with a maximum of $\frac{1}{2}$ in. in any box section.

11.5 *Position of Reinforcement*—The maximum variation in the position of the reinforcement or 5-in. or less slab and wall thickness shall be $\pm \frac{3}{8}$ in., and for greater than 5-in. slab and wall thickness shall be $\pm \frac{1}{2}$ in. In no case, however, shall the cover over the reinforcement be less than $\frac{5}{8}$ in., as measured to the internal surface or the external surface except the cover over the reinforcement for the external surface of the top slab for boxes with under 2 ft of cover shall not be less than $1\frac{3}{8}$ in. The preceding minimum cover limitation does not apply at the mating surfaces of the joint.

11.6 *Area of Reinforcement*—The areas of steel reinforcement shall be the design steel areas as shown in Tables 1 and 2. Steel areas greater than those required shall not be cause for rejection. The permissible variation in diameter of any wire in finished fabric shall conform to the tolerances prescribed for the wire before fabrication by either Specification A 82 or A 496 as applicable. If steel bars (Grade 60) are used in lieu of welded wire fabric, the steel areas presented in Tables 1 and 2 shall be increased to account for the difference in steel yield strength, steel spacing, concrete cover, and crack control between the welded wire fabric and steel bars.

11.7 *Haunch Dimensions*—The minimum vertical and horizontal dimensions shall be equal to the slab thickness. Haunch configurations greater than those specified in Tables 1 and 2 shall be permitted, provided no reductions are made to the required steel areas.

12. Repairs

12.1 Box sections shall be repaired, if necessary, because of

imperfections in manufacture or handling damage and will be acceptable if, in the opinion of the purchaser, the repaired box section conforms to the requirements of this specification.

13. Inspection

13.1 The quality of materials, the process of manufacture, and the finished box sections shall be subject to inspection by the purchaser.

14. Rejection

14.1 Box sections shall be subject to rejection on account of failure to conform to any of the specification requirements. Individual box sections shall be allowed to be rejected because of any of the following:

14.1.1 Fractures or cracks passing through the wall, except for a single end crack that does not exceed the depth of the joint,

14.1.2 Defects that indicate mixing and molding not in compliance with 9.1, or honeycombed or open texture that would adversely affect the function of the box sections,

14.1.3 Abnormalities in the ends of the box sections to the walls and center line of the box section, within the limits of variations given in Section 11, except where beveled ends are specified, and

14.1.4 Damaged ends, where such damage would prevent making a satisfactory joint.

15. Marking

15.1 The following information shall be legibly marked on each box section by indentation, waterproof paint, or other approved means:

15.1.1 Box section span, rise, table number, maximum and minimum design earth cover, and specification designation.

15.1.2 Date of manufacture, and

15.1.3 Name or trademark of the manufacturer.

15.2 Each section shall be clearly marked by indentation on either the inner or outer surface during the process of manufacture so that the location of the top will be evident immediately after the forms are stripped. In addition, the word “top” shall be lettered with waterproof paint on the inside top surface.

APPENDIX

(Nonmandatory Information)

X1. DESIGN CRITERIA USED TO DEVELOP TABLES 1 AND 2

X1.1 *Bedding and Backfill Assumptions:*

X1.1.1 The bedding is assumed to provide a slightly yielding, uniformly distributed support over the bottom width of the box section.

X1.1.2 The design earth covers and reinforcement areas are based on the weight of a column of earth over the width of the box section multiplied by a soil-structure interaction factor (see Table X1.1).

X1.2 *Criteria for Loads:*

X1.2.1 Design loads are based on the American Association of State Highway and Transportation Officials (AASHTO) *Standard Specifications for Highway Bridges*, 1997.

X1.2.2 Live loads for designs given in Table 1 are HS20 loadings as defined in the AASHTO specifications. Live loads for designs given in Table 2 are interstate loadings as defined in U.S. Dept. of Commerce, Bureau of Public Roads Circular Memorandum 22-40, 22 April 1957.⁷ Impact allowances are in accordance with AASHTO specifications. For box sections

with less than 2 ft of cover, wheel loads are distributed over a width of $[48 + 0.06 \times (\text{span minus one haunch})]$, in inches, perpendicular to the span by use of longitudinal distribution reinforcement in top and bottom of top slab. Live loads are applied parallel to the span as concentrated point loads. Box sections with 2 ft or more of cover have the live load applied as a concentrated point load on the surfaces and distributed over a length equal to 1.75 H in each direction. The maximum distribution in the direction perpendicular to the span for each wheel load is one 6-ft lane width. This is equivalent to assuming the maximum wheel loads occur simultaneously in each lane. Live loads are applied for all depths and are not cut off at any preset depth.

X1.2.3 Cover loads for designs given in Tables 1 and 2 are the weight of a column of earth of a width equal to the outside width dimension of the box section and a height equal to the depth of cover over the top of the section multiplied by the maximum soil/structure interaction factor of 1.15 for embankment installations.

X1.2.4 Lateral earth pressure from weight of earth above and adjacent to a box section is taken as a minimum of 0.25 times the vertical pressure, and an additional 0.25 times

⁷ Available from U.S. Department of Commerce.

TABLE X1.1 Specific Criteria Used for Tables 1 and 2^A

Material Properties:	
Welded wire fabric, minimum specified yield stress	65 000 psi
Deformed bars, minimum specified yield stress	60 000 psi
Concrete, minimum specified compressive strength	5 000 psi
Soil Data:	
Unit weight	120 lbf/ft ³
Ratio of lateral to vertical pressure from weight to earth	0.50 max to 0.25 min
Additional lateral pressure from approaching truck wheels	$700 \div H$, lbf/ft ² or 800 lbf/ft ² when $H < 1$ ft, where H = earth cover, ft
External water table	below box section invert
Soil structure interaction factor	1.15
Capacity reduction factors (from AASHTO Bridge Specifications):	
Shear	0.90
Axial compression combined with bending	0.95
Loading Data:	
Load factor = δ (BDL + BLL)	$\delta = 1.3$ B = 1.0 for D. L. B = 1.7 for L. L.
Truck axle load:	
H2O (Table 1)	32 000 lbf
Interstate (Table 2)	2 at 24 000 lbf each
Impact (variable with depth) (see AASHTO Bridge Specifications):	
Uniform internal pressure	0 to 30 %
Depth of water in box section	0.0
External ground water pressure	equal to inside height
0.0	
Structural Arrangement:	
Concrete cover over steel	1.0 in.
Top slab	1.0 in. for fill heights 2 ft and greater, 2.0 in. for fill heights under 2 ft
Slab thickness	$\frac{1}{12}$ times inside span plus 1.0 in. up to 7-ft span, $\frac{1}{12}$ inside span above 7-ft span
Side wall thickness	equal to slab thickness
Haunch dimensions	vertical and horizontal dimensions both equal to slab thickness
Minimum reinforcing inside face slabs and side walls, outside face side walls and corners of slabs	0.002 bt

^A The structural arrangement and details are shown in Fig. 1.

vertical pressure is added when determining steel areas only when areas are increased by such increased lateral pressure. For Tables 1 and 2, additional lateral pressure in lb/ft^2 from approaching truck wheel loads is taken as 700 divided by depth of earth cover in feet, or 800 where depth to surface is less than 1 ft, and is added when determining steel areas only at sections where area is increased by increased lateral pressure.

X1.3 Methods of Analysis—The structural effects of the loads described in X1.2 are evaluated based on the elastic method of structural analysis. Design moments, shears, and thrusts are determined by computer analysis using the stiffness matrix method, and design is based on maximum stress resultants at critical sections caused by the most severe combination of design loads.

X1.4 Method of Design:

X1.4.1 Box section design is based on load factor design provisions given in *AASHTO Specifications for Bridges*. Reinforcement areas are governed by either service live load fatigue stress limitation of $21\,000\ \text{lb}/\text{in}^2$, or service total load stress limitation of $36\,000\ \text{lb}/\text{in}^2$, or ultimate total load yield stress limitation of $65\,000\ \text{lb}/\text{in}^2$ using a capacity reduction factor of 0.95 for flexure and axial compression, 0.90 for shear. Service load stress shall not be greater than permitted in the *AASHTO Specifications for Bridges*. This requirement does not govern the design of box section reinforcement with welded wire fabric circumferential reinforcement with a maxi-

imum spacing of 4 in. Longitudinal distribution reinforcement called for in Tables 1 and 2 for top slab inside face is in accordance with distribution reinforcement formulas given in AASHTO specification for bridge decks and shall either be welded wire fabric or deformed Grade 60 bars.

X1.4.2 Some box section designs shown in Tables 1 and 2 have minimum practical steel area requirements. For such designs, the steel areas calculated for support of design loads are less than the minimum steel area which is specified for slabs in AASHTO specification, $0.002\ \text{bt}$, and thus, the minimum reinforcement areas are shown in Tables 1 and 2.

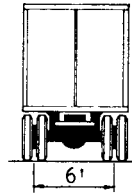
X1.4.3 For specific criteria used in Tables 1 and 2, refer to Table X1.1.

X1.4.4 The maximum height of earth cover shown in Tables 1 and 2 is determined by the shear strength of the box section without the use of special shear reinforcement and by the standard weight of the column of earth directly above the box section multiplied by the soil structure interaction factor.

X1.5 Multiple Cell Installations—The designs given herein are for single-cell precast reinforced concrete box sections. The units shall be allowed to be used in parallel for multicell installations if means of positive lateral bearing by continuous contact between the sides of adjacent boxes are provided. Compacted earth fill, granular backfill, flowable fill, or grouting between the units are considered means of providing such positive bearing.

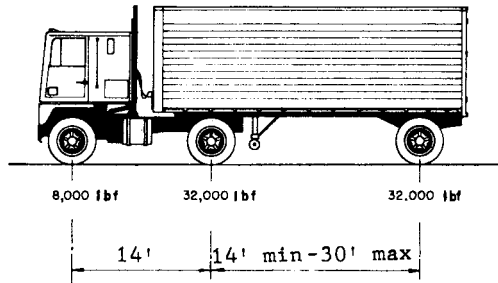
WHEEL SPACING

HS-20 Truck
and
Interstate Alternate Load



AXLE LOADS

HS-20 Load



AXLE LOADS

Interstate Alternate Load

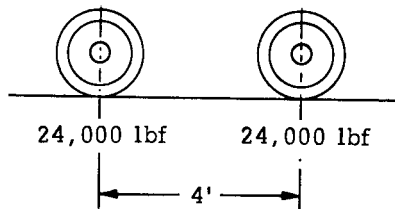


FIG. X1.1 Axle Loads for Box Section Standard Designs

The American Society for Testing and Materials takes no position respecting the validity of any patent rights asserted in connection with any item mentioned in this standard. Users of this standard are expressly advised that determination of the validity of any such patent rights, and the risk of infringement of such rights, are entirely their own responsibility.

This standard is subject to revision at any time by the responsible technical committee and must be reviewed every five years and if not revised, either reapproved or withdrawn. Your comments are invited either for revision of this standard or for additional standards and should be addressed to ASTM Headquarters. Your comments will receive careful consideration at a meeting of the responsible technical committee, which you may attend. If you feel that your comments have not received a fair hearing you should make your views known to the ASTM Committee on Standards, at the address shown below.

This standard is copyrighted by ASTM, 100 Barr Harbor Drive, PO Box C700, West Conshohocken, PA 19428-2959, United States. Individual reprints (single or multiple copies) of this standard may be obtained by contacting ASTM at the above address or at 610-832-9585 (phone), 610-832-9555 (fax), or service@astm.org (e-mail); or through the ASTM website (www.astm.org).