



Designation: E 514 – 02

Standard Test Method for Water Penetration and Leakage Through Masonry¹

This standard is issued under the fixed designation E 514; the number immediately following the designation indicates the year of original adoption or, in the case of revision, the year of last revision. A number in parentheses indicates the year of last reapproval. A superscript epsilon (ϵ) indicates an editorial change since the last revision or reapproval.

This standard has been approved for use by agencies of the Department of Defense.

1. Scope *

1.1 This laboratory test method² provides a procedure for determining the resistance to water penetration and leakage through unit masonry subjected to wind-driven rain.

1.2 *This standard does not purport to address all of the safety concerns, if any, associated with its use. It is the responsibility of the user of this standard to establish appropriate safety and health practices and determine the applicability of regulatory limitations prior to use.* For a specific hazard statement see Section 5.

2. Referenced Documents

2.1 American Concrete Institute Standard:³

ACI 531 Building Code Requirements for Concrete Masonry Structures

2.2 Brick Institute of America Standard:⁴

Construction of Brick Masonry, *Building Code Requirements for Engineered Brick Masonry*

3. Significance and Use

3.1 This test method provides information that aids in evaluating the effect of four principal variables: materials, coatings, wall design, and workmanship.

3.2 Water penetration and leakage through masonry is significantly affected by air pressure in the test chamber. Data from tests made at different pressures are not comparable.

3.3 The performance of a masonry wall is a function of materials, construction, wall design, and maintenance. In service the performance will also depend on the rigidity of supporting structure and on the resistance of components to deterioration by various causes, such as corrosion, vibration,

thermal expansion and contraction, curing, and others. It is impossible to simulate the complex conditions encountered in service, such as variations in wind velocity, negative pressure, and lateral or upward moving air and water. Factors such as location, exposure, and wall openings should be considered.

3.4 Given the complexity of variables noted above, this test method establishes comparative behavior between various masonry wall constructions in a given laboratory.

3.5 Even when a single laboratory tests the same wall design utilizing the same wall materials and the same construction practices, variables such as the level of skill of the mason building the specimen, the temperature and humidity in the laboratory at the time of construction, curing of the specimen, the moisture contents of the materials used to build the specimen, and even the use or lack of use of a lime and water wash on the back of the specimen can affect the results of the test making reliable comparisons dubious. For these reasons and the multi-variables listed in 3.1, 3.2, and 3.3, a meaningful, useful, absolute wall leakage rating standard is impractical and discouraged.

4. Apparatus

4.1 *Test Chamber*—The test chamber shall be similar to that shown in Fig. 1 and Fig. 2 and may be constructed of metal, wood, or plastic. It shall provide an opening with a minimum area of 1.08 m² (12 ft²). For example, 900 mm (36 in.) wide and 1200 mm (48 in.) high is suitable. Edges of the chamber in contact with the specimen shall be lined with a closed-cell compressible gasket material. An observation port shall be provided in the face of the chamber. The 19.0-mm ($\frac{3}{4}$ -in.) diameter corrosion-resistant spray pipe shall have a single line of 1.0-mm (0.04-in.) diameter holes spaced 25.0 mm (1 in.) apart.

4.2 *Fixtures and Appurtenances to Chamber*—Fixtures and appurtenances to the chamber shall consist of an air line with manometer, a water line with valves, an orifice meter and manometer and a water drain pipe at the bottom of the chamber. The water spray pipe shall be positioned so that the water impinges the specimen not more than 75.0 mm (3.00 in.) below the top of the test chamber. The drain pipe may discharge into a container equipped with an adjustable depth air outlet pipe and top baffles to reduce surge.

¹ This test method is under the jurisdiction of ASTM Committee C15 on Manufactured Masonry Units and is the direct responsibility of Subcommittee C15.04 on Research.

Current edition approved June 10, 2002. Published August 2002. Originally published as E 514 – 74. Last previous edition E 514 – 90(96)¹.

² This test method is based upon those used by the National Bureau of Standards and described in *NBS Report BMS7*, “Water Permeability of Masonry Walls,” 1933, and *NBS Report BMS82*, “Water Permeability of Walls Built of Masonry Units,” 1942.

³ Available from American Concrete Inst., P. O. Box 19150, Detroit, MI 48219.

⁴ Available from Brick Institute of America, 11490 Commerce Park Dr., Suite 300, Reston, VA 22091.

***A Summary of Changes section appears at the end of this standard.**

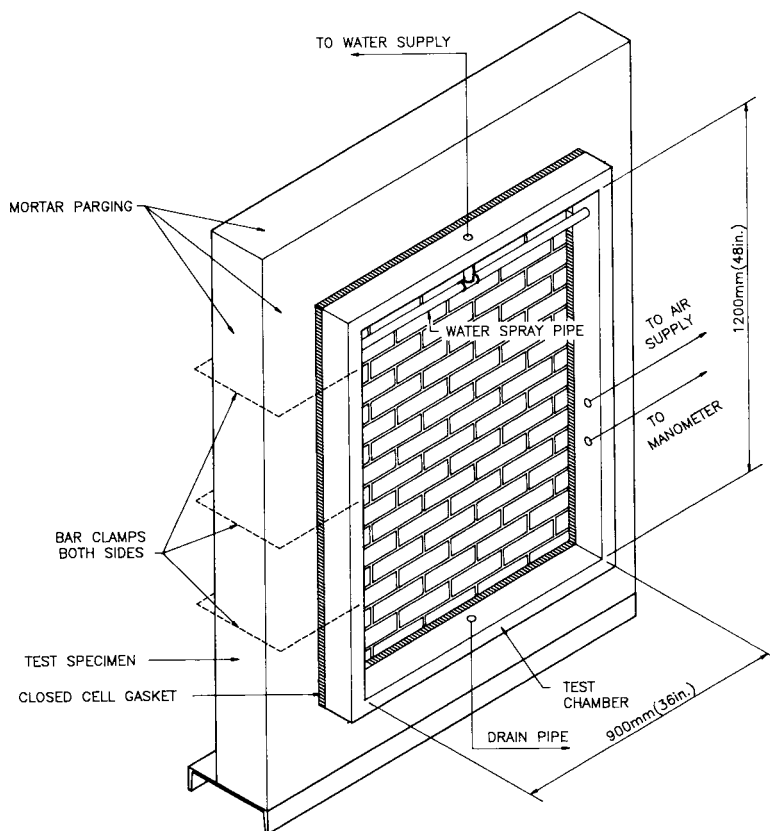


FIG. 1 Isometric Projection of Testing Chamber

4.3 Other equipment shall consist of devices for handling the specimen and measuring time, water quantities, temperature, humidity, and air pressure within the test chamber.

5. Hazards

5.1 The use of this test method will require careful design consideration of both air chamber and support of the wall system to avoid possible injury due to equipment or specimen failure.

6. Temperature and Humidity Conditions

6.1 Maintain the air in the laboratory at a temperature of $24 \pm 8^\circ\text{C}$ ($75 \pm 15^\circ\text{F}$) and a relative humidity of $55\% \pm 25\%$.

7. Test Specimens

7.1 *Masonry Materials*—Masonry and associated materials shall be representative of the construction or the materials that are being considered for the construction. Precondition all materials to a stable condition by storing in laboratory environment for not less than 5 days before use.

7.2 *Size of Test Walls*—The height and length of the specimen shall provide a minimum of 1.08 m^2 (12 ft^2) exposed to the test, plus at least a 200-mm (8-in.) overlap on all edges. The minimum height or length of the specimen shall be 1.22 m (4 ft). The length of the specimen shall be such that at least one head joint in each course of masonry is exposed to the test.

7.3 *Building Wall Specimens*—Methods and workmanship used in the construction of the specimen shall be representative of the construction (Note 1). Build the wall specimen on an

inverted steel channel section so that the face of the wall to be exposed to test is flush with the outside face of one flange of the channel. As shown in Fig. 3 attach to, or build flashing into masonry forming a trough to collect water that may pass through to the back side of the wall.

NOTE 1—Standards for masonry construction are contained in the following documents: Construction of Brick Masonry (Building Code Requirements for Engineered Brick Masonry, Section 5) and ACI Standard 531-81.

7.4 *Number of Specimens*—The test shall consist of at least 3 specimens.

7.5 *Storage of Specimens*—Specimens shall be retained in the laboratory during storage and shall be enclosed in an impervious plastic wrap immediately after construction and cured in this manner for 7 days. After 7 days, the wrap shall be removed and aging shall continue for at least 7 more days in laboratory air as stated in 6.1.

8. Procedure

8.1 *Mounting Chamber*—Position the test chamber on the specimen and clamp firmly in place, compressing the gasket to form a seal.

8.2 Apply a 10-mm ($\frac{3}{8}$ -in.) minimum thickness coat of mortar parging to all exposed surfaces of the specimen except the back side of the wall and the area enclosed by the test chamber.

NOTE 2—A lime and water wash may be brush applied to back face of the test specimen to make moisture detection easier on dark surfaces. A portland cement and water wash should not be used.

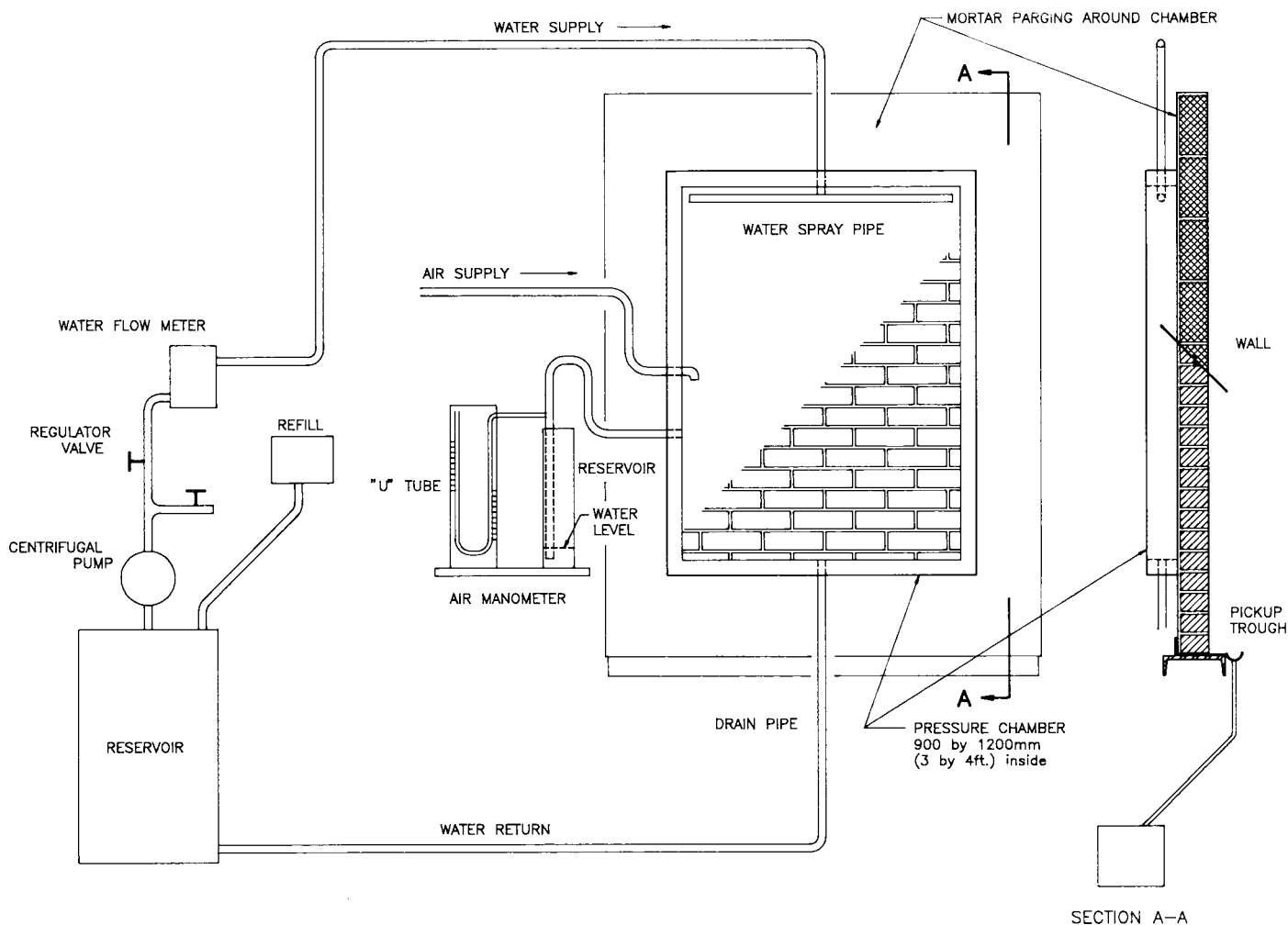


FIG. 2 General Arrangement of Water Penetration Testing Chamber System

8.3 Adjust the rate of application of water to 138 L/m² (3.4 gal/ft²) of wall per hour.

8.4 Simultaneously, with the application of water, increase the air pressure within the chamber. If the pressure is not specified the specimen will be tested at 500 Pa (10 lbf/ft²). Supply slightly more air than is needed to maintain pressure and adjust, if necessary, to prevent excessive surge in the water reservoir.

8.5 Maintain the specified conditions for a period of not less than 4 h.

9. Record of Observation

9.1 During the 4 h of testing, observations shall be made at 30-min intervals. Record the following:

- 9.1.1 Time of appearance of dampness on back of specimen.
- 9.1.2 Time of appearance of first visible water on the back of the specimen.
- 9.1.3 Area of dampness on back of wall at the end of 4-h test period expressed as a percent of area tested.
- 9.1.4 Total water collected in 4-h test period from each trough.

10. Retesting

10.1 The specimens may be returned to storage and retested at age 28 days or later and re-evaluated.

11. Report

11.1 Report the following information:

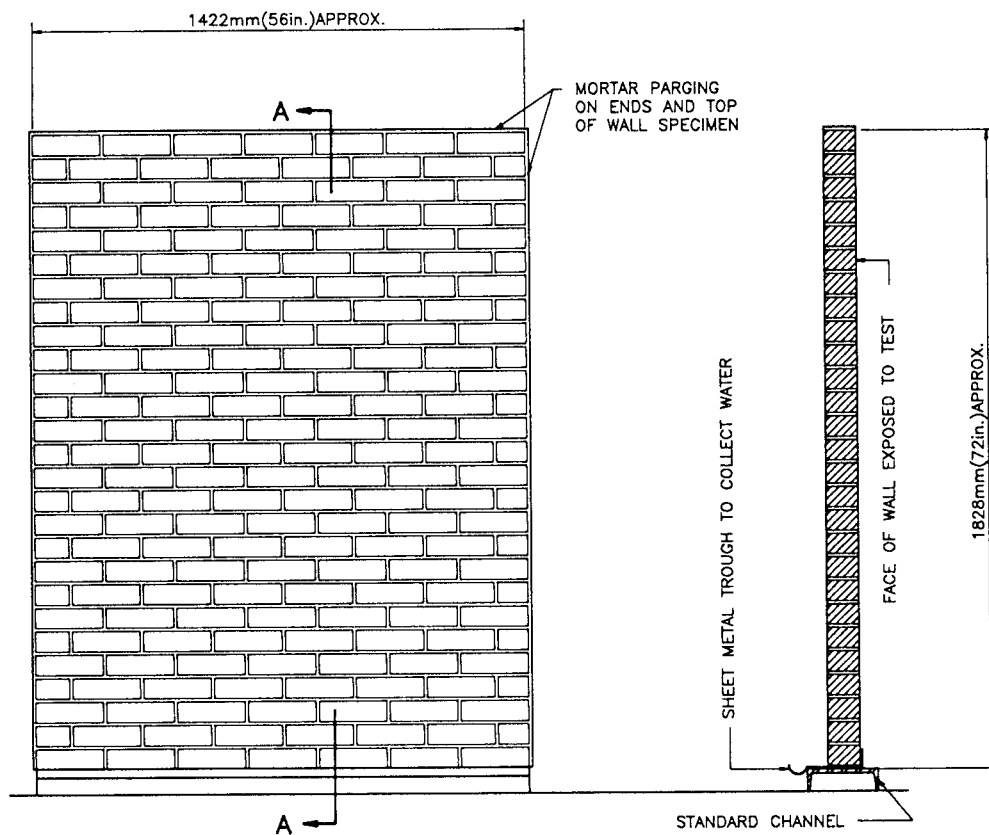
- 11.1.1 Description of all materials including coatings, masonry units, mortar materials, and composition of mortar used to construct the wall specimens, and their properties as determined by the appropriate standards.
- 11.1.2 Description of specimen wall design and details of construction. Include photographs and drawings as necessary.
- 11.1.3 Detailed description of the quality of workmanship used in construction of test specimens.
- 11.1.4 Conditions of test.
- 11.1.5 Record of observations as required in Section 9.
- 11.1.6 Record of temperature and humidity during construction, aging, and test periods.

12. Precision and Bias

12.1 No statement is made either on the precision or on the bias of this test method for testing water penetration or leakage through masonry due to the test variables involved.

13. Keywords

13.1 air-pressure; laboratory test; manometer; masonry; simulated wind driven rain; test chamber; water penetration; water spray pipe



UNEXPOSED ELEVATION

SECTION A-A

FIG. 3 Typical Brick Masonry Test Specimen

SUMMARY OF CHANGES

This section contains the principal changes to the standard that have been incorporated since the last issue.

Sections 3, 5, and 6 were modified to change the language to the imperative mood.

ASTM International takes no position respecting the validity of any patent rights asserted in connection with any item mentioned in this standard. Users of this standard are expressly advised that determination of the validity of any such patent rights, and the risk of infringement of such rights, are entirely their own responsibility.

This standard is subject to revision at any time by the responsible technical committee and must be reviewed every five years and if not revised, either reapproved or withdrawn. Your comments are invited either for revision of this standard or for additional standards and should be addressed to ASTM International Headquarters. Your comments will receive careful consideration at a meeting of the responsible technical committee, which you may attend. If you feel that your comments have not received a fair hearing you should make your views known to the ASTM Committee on Standards, at the address shown below.

This standard is copyrighted by ASTM International, 100 Barr Harbor Drive, PO Box C700, West Conshohocken, PA 19428-2959, United States. Individual reprints (single or multiple copies) of this standard may be obtained by contacting ASTM at the above address or at 610-832-9585 (phone), 610-832-9555 (fax), or service@astm.org (e-mail); or through the ASTM website (www.astm.org).