



Standard Test Method for Water Content and Density of Soil in Place by Time Domain Reflectometry (TDR)¹

This standard is issued under the fixed designation D 6780; the number immediately following the designation indicates the year of original adoption or, in the case of revision, the year of last revision. A number in parentheses indicates the year of last reapproval. A superscript epsilon (ϵ) indicates an editorial change since the last revision or reapproval.

1. Scope

1.1 This test method may be used to determine the water content of soils and the in-place density of soils using a TDR apparatus.

1.2 This test method applies to soils that have 30 % or less by weight of their particles retained on the 19.0-mm ($\frac{3}{4}$ -in.) sieve.

1.3 This test method is suitable for use as a means of acceptance for compacted fill or embankments.

1.4 This test method may not be suitable for organic and highly plastic soils.

1.5 All observed and calculated values shall conform to the guidelines for significant digits and rounding established in Practice D 6026.

1.5.1 The method used to specify how data are collected, calculated, or recorded in this standard is not directly related to the accuracy to which the data can be applied in design or other uses, or both. How one applies the results obtained using this standard is beyond its scope.

1.6 The values stated in either SI units or inch-pound units are to be regarded separately as standard. The values stated in each system may not be exact equivalents; therefore, each system shall be used independently of the other. Combining values from the two systems may result in non-conformance with the standard.

1.7 *This standard does not purport to address all of the safety concerns, if any, associated with its use. It is the responsibility of the user of this standard to establish appropriate safety and health practices and determine the applicability of regulatory limitations prior to use.*

2. Referenced Documents

2.1 ASTM Standards:

D 653 Terminology Relating to Soil, Rock, and Contained Fluids²

¹ This test method is under the jurisdiction of ASTM Committee D18 on Soil and Rock and is the direct responsibility of Subcommittee D18.08 on Special and Construction Control Tests.

Current edition approved April 10, 2002. Published August 2002.

² *Annual Book of ASTM Standards*, Vol 04.08.

- D 698 Test Methods for Moisture-Density Relations of Soils and Soil-Aggregate Mixtures, Using 5.5 lb (2.49 kg) Rammer and 12-in. (305-mm) Drop²
- D 1556 Test Method for Moisture-Density of Soil In-Place by the Sand-Cone Method²
- D 1557 Test Methods for Moisture-Density Relations of Soils and Soil-Aggregate Mixtures, Using 10 lb (4.54 kg) Rammer and 18-in. (457-mm) Drop²
- D 2167 Test Method for Density of Soil In-Place by the Rubber-Balloon Method²
- D 2216 Method for Laboratory Determination of Water (Moisture) Content of Soil, Rock, and Soil-Aggregate Mixtures²
- D 2922 Test Methods for Density of Soil and Soil Aggregate and Rock in Place by Nuclear Methods (Shallow Depth)²
- D 2937 Test Method for Density of Soil In-Place by the Drive-Cylinder Method²
- D 3017 Test Method for Water Content of Soil and Rock In-Place by Nuclear Methods (Shallow Depth)²
- D 3740 Practice for Minimum Requirements for Agencies Engaged in the Testing and/or Inspection of Soil and Rock as Used in Engineering Design and Construction²
- D 4643 Method for Determination of Water (Moisture) Content of Soil by the Microwave Oven Method
- D 4718 Practice for Correction of Unit Weight and Water Content for Soils Containing Oversize Particles²
- D 4753 Specification for Evaluating, Selecting, and Specifying Balances and Scales for Use in Soil and Rock Testing²
- D 4914 Test Method for Density and Unit Weight of Soil and Rock in Place by the Sand Replacement Method²
- D 4944 Test Method for Field Determination of Water (Moisture) Content of Soil by the Calcium Carbide Gas Pressure Tester Method²
- D 4959 Test Method for Determination of Water (Moisture) Content of Soil by Direct Heating Method²
- D 5030 Test Methods for Density and Unit Weight of Soil and Rock in Place by the Water Replacement Method²
- D 5080 Test Method for Rapid Determination of Percent Compaction²

- D 6026 Practice for Using Significant Digits in Geotechnical Data³
- D 6565 Test Method for Determination of Water (Moisture) Content of Soil by the Time Domain Reflectometry Method³
- E 1 Specification for ASTM Thermometers⁴
- E 11 Specification for Wire-Cloth Sieves for Testing Purposes⁴
- SI 10 Standard for Use of the International System of Units (SI): The Modern Metric System⁵

3. Terminology

3.1 *Definitions*—Refer to Terminology D 653 for standard definitions of terms.

3.2 *Definitions of Terms Specific to This Standard:*

3.2.1 *apparent dielectric constant, K_{insitu} , K_{mold}* —the squared ratio of the velocity of light in air to the apparent velocity of electromagnetic wave propagation in the soil measured by a TDR apparatus in place and in the cylindrical mold, respectively.

3.2.2 *apparent length, l_a* —on a plot of electromagnetic wave signal versus scaled distance measured by a TDR apparatus as shown in Fig. 1, it is the horizontal distance between the point on the waveform due to the reflection from the surface of the soil where the probe is inserted into the soil to the point on the waveform due to the reflection from the end of the probe.

3.2.3 *coaxial head, CH^6* —a device that forms a transition from the coaxial cable connected to the TDR apparatus to the Multiple Rod Probe or to a Cylindrical Mold Probe.

3.2.4 *cylindrical mold probe, CMP^6* —a probe formed by a cylindrical metal mold as the outer conductor having a non-

metallic end plate, filled with compacted soil, and with an inner conductor consisting of a rod driven into the soil along the axis of the mold.

3.2.5 *multiple rod probe, MRP^6* —a probe formed by driving four rods of equal length into the soil in a pattern where three of the rods define the outer conductor of a “coaxial cable” and one of the rods is the inner conductor.

3.2.6 *probe length, L* —the length of the TDR probe that is below the surface of the soil.

3.2.7 *scaled distance, l* —the product of the velocity of light in air and electromagnetic wave travel time in the soil divided by two.

4. Summary of Test Method

4.1 The dielectric constant of the soil in-place is determined using a multiple rod probe (MRP), a coaxial head (CH), and TDR apparatus. The soil at the location of the in-situ measurement is then excavated and compacted in a mold. By measurement of the mass of the mold and soil and with the mass and volume of the mold known, the wet density of the soil in the mold is determined. A rod driven into the soil along the axis of the mold creates a cylindrical mold probe (CMP). Using the same coaxial head (CH), an adapter ring, and the TDR apparatus the dielectric constant of the soil in the mold is measured. The water content of the soil in the mold is determined using a correlation between the dielectric constant, moisture content and soil density. The correlation requires two constants that are somewhat soil specific. It is assumed that the water content of the soil in place is the same as the water content in the mold. The density of the soil in place is determined from the density of the soil in the mold and the dielectric constants measured in the mold and in place.

5. Significance and Use

5.1 This test method can be used to determine the density and water content of naturally occurring soils and of soils placed during the construction of earth embankments, road fills, and structural backfills.

5.2 Time domain reflectometry (TDR) measures the apparent dielectric constant of soil. The dielectric constant is affected

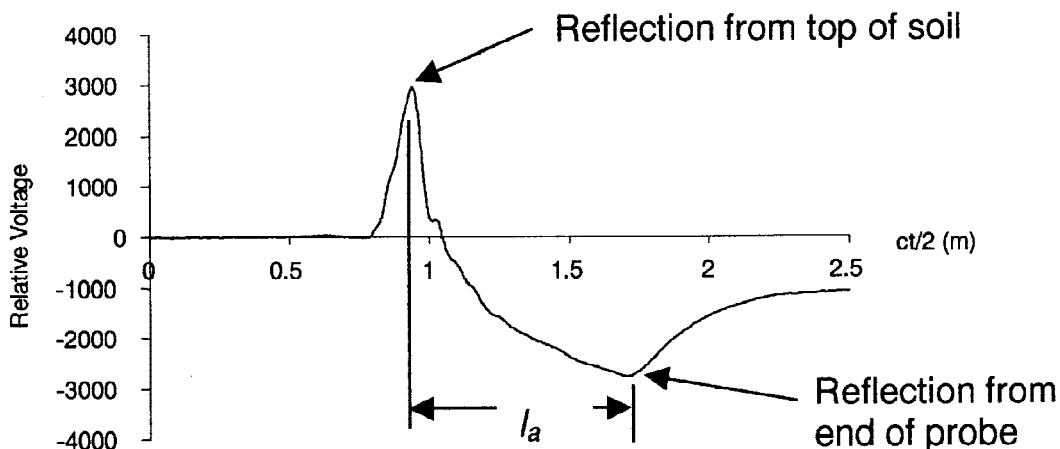


FIG. 1 Typical TDR Curve Showing Reflection Points and Apparent Length, l_a

³ Annual Book of ASTM Standards, Vol 04.08.

⁴ Annual Book of ASTM Standards, Vol 14.02.

⁵ Annual Book of ASTM Standards, Vol 14.04.

⁶ The apparatus is covered by patents. Interested parties are invited to submit information regarding the identification of alternative(s) to this patented item to the ASTM Headquarters. Your comments will receive careful consideration at a meeting of the responsible technical committee, which you may attend.

significantly by the water content and density of soil, and to a lesser extent by the chemical composition of soil and pore water and by temperature. The water content determined in this standard makes use of a different relationship between apparent dielectric constant and water content from that used in Test Method D 6565.

5.3 Soil and porewater characteristics are accounted for in this method with two calibration constants that are determined for a given soil by performing compaction tests as described in Annex A2 where water content also is measured by use of Method D 2216.

5.4 The water content is the average value over the length of the cylindrical mold and the density is the average value over the length of the multiple-rod probe embedded in the soil.

NOTE 1—The quality of the result produced by this standard is dependent on the competence of the personnel performing it, and the suitability of the equipment and facilities used. Agencies that meet the criteria of Practice D 3740 are generally considered capable of competent and objective testing/sampling/inspection/etc. Users of this standard are cautioned that compliance with Practice D 3740 does not in itself assure reliable results. Reliable results depend on many factors; Practice D 3740 provides a means of evaluating some of those factors.

6. Interferences

6.1 Quality and accuracy of the test results significantly depend on soil having contact with the inner conductor of the probes. To assist this, when installing the rods of the MRP, the rod that forms the inner conductor must be the last rod installed. If in the installation process, the rod hits upon a large particle that causes it to drift from vertical alignment, all rods should be removed and the test conducted in a new location at least 0.2-m (8-in.) from the previous test location.

6.2 The quality of the signal read by the TDR apparatus depends on having clean contacts between the CH and the MRP and the CMP. The contacting surfaces should be wiped with a clean cloth prior to placing the CH on the MRP and the CMP. Once placed, observe the signal on the TDR apparatus. If the characteristic signal is not present, the CH may have to be slightly rotated about its axis to make better contact.

6.3 This test method only applies to non-frozen soil. The apparent dielectric constant is slightly temperature dependent for soils and depends on soil type. For soil temperatures between 15°C and 25°C (59°F and 77°F), no temperature corrections are needed for most soils. A simple temperature adjustment for water content determination is part of the test method.

7. Apparatus

7.1 *TDR Apparatus*, a Metallic Time Domain Reflectometer with a scaled length resolution of at least 2.4-mm (0.10-in.) (this corresponds approximately to a time between data points less than or equal to sixteen picoseconds (16×10^{-12} s)). A portable computer with a serial communication port to the TDR is suggested for controlling the apparatus, acquiring and saving the data, and for making the calculations as the test proceeds.

7.2 *Multiple Rod Probe (MRP)⁶ with Coaxial Head (CH)³*

7.2.1 The MRP consists of four common steel spikes, typically 250-mm (10-in.) in length and uniform diameters of

9.5-mm ($\frac{3}{8}$ -in.). (Other length spikes, but with the same diameter, may be used but in no case should they have lengths less than 150-mm (6-in.). For lengths longer than 250-mm (10-in.), drift in the alignment of the spikes and loss of reflected signal from the end of the MRP may occur.)

7.2.2 A MRP guide template (see Fig. 2) is used to guide the spikes as they are driven into the soil. The template must allow for its removal after the spikes are driven and before a TDR measurement is made. (The radius from the central spike to the outer spikes must be within the range of 5 to 7.5 times the diameter of the central spike.)

7.2.3 The Coaxial Head (CH)⁶ (see Fig. 3) forms a transition from the coaxial cable coming from the TDR apparatus to the MRP.

7.3 *Cylindrical Mold Probe (CMP)⁶*, the CMP consists of a cylindrical mold, a guide template, a central rod, and a ring collar. Details for these items are shown in Fig. 4.

7.3.1 The central rod is a stainless steel rod with a diameter of 8.0-mm ($\frac{5}{16}$ -in.) and a length of 264-mm (10.4-in.) in length.

7.4 *Balances or Scales*, meeting Specification GP10 of Specification D 4753 to determine the mass of the soil and the cylindrical mold. A battery-operated balance or scale having a minimum capacity of 10 kg is suitable when an apparatus with the dimension given in Fig. 3 is used.

7.5 *Driving Tools*, a brass-headed hammer for driving spikes for the MRP and the central rod into the cylindrical mold. A resin-headed hammer also may be used for driving the central rod into the cylindrical mold. (Use of these hammers prevents peening of the driving end of the steel rods from repeated use.)

7.6 *Tamping Rod*, an aluminum rod with flat ends, a diameter of 37-mm (1.5-in.), and a length of 380-mm (15-in.).

7.7 *Thermometer*, 0 to 50°C range, 0.5°C graduations, conforming to requirements of Specification E 1.

7.8 *Vernier or Dial Caliper*, having a measuring range of at least 0 to 250-mm (0 to 10-in.) and readable to at least 0.02-mm (0.001-in.).

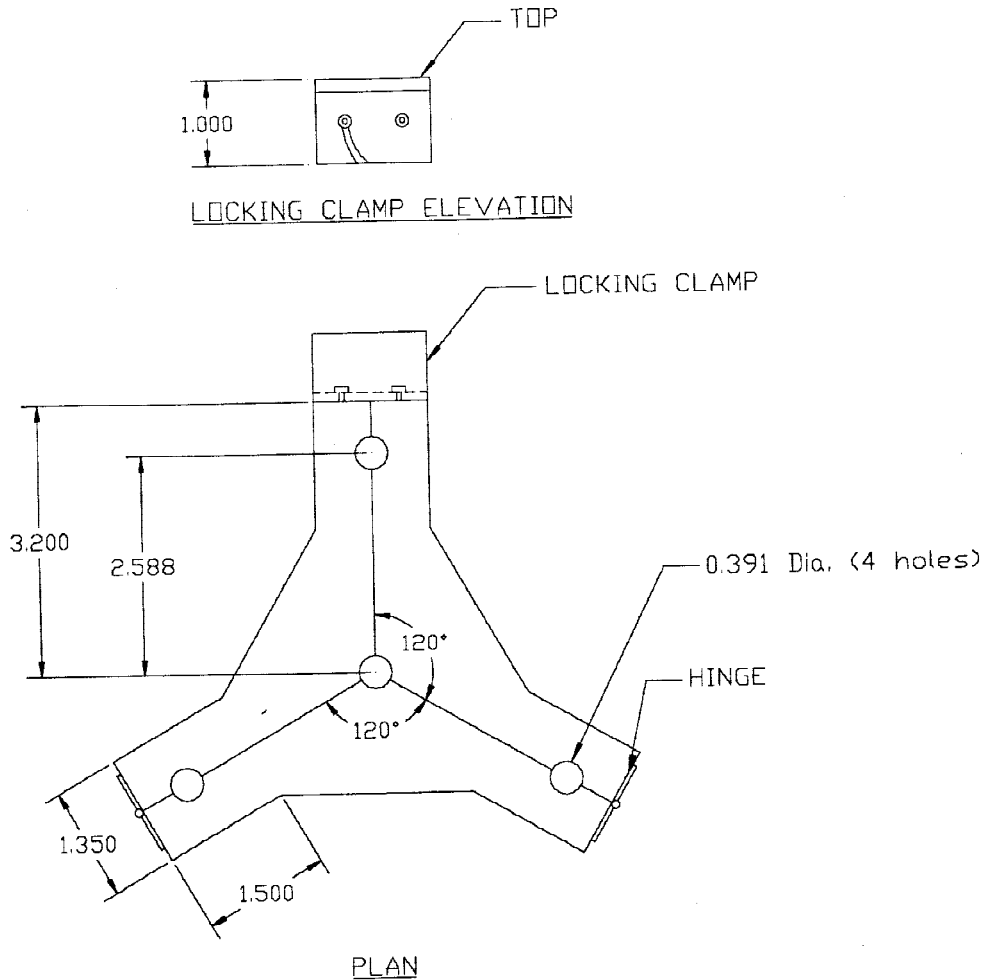
7.9 *Miscellaneous Tools*, a battery-powered hand drill with a spare battery and charger and with a 25-mm (1-in.) diameter auger bit (alternatively, a small pick will work), straight edge for smoothing the surface of the soil for the in-place test and for smoothing the surface of the soil in the cylindrical mold, pliers for removing the spikes and central rod, small scoop or spoon for removal of the loosened soil and for placement in the cylindrical mold, and a brush for removing excess soil from around the base of the cylindrical mold prior to determining its mass.

8. Preparation of Apparatus

8.1 Charge or replace, as appropriate batteries in the TDR apparatus, the hand drill, and the balance.

9. Calibration and Standardization

9.1 Determine the average length of the spikes that will penetrate into the soil surface in the in-place test, L_{insitu} , m (in.), by inserting each spike into the MRP guide template and measuring the length that each spike protrudes from the



Note: All dimensions are in inches.
See Table 1 for tolerances and metric equivalents.

FIG. 2 MRP Guide Template

TABLE 1 Metric Equivalents for Dimensions in Fig. 2

(in.)	Tol. (in.)	(mm)	Tol. (mm)
0.391	± 0.002	10.00	± 0.05
1.000	± 0.005	25.00	± 0.15
1.350	± 0.015	34.30	± 0.40
1.500	± 0.015	38.00	± 0.40
2.588	± 0.005	65.70	± 0.13
3.200	± 0.020	80.00	± 0.50

template when fully inserted. All measured lengths should be equal within 0.5-mm (0.020-in.).

9.2 Determine the volume of the cylindrical mold, V_{mold} , $m^3(in.^3)$, in accordance with Annex A1.

9.3 Determine the mass of the empty and clean cylindrical mold including the base, but without the ring collar, M_2 , kg (lbf), by placing on a calibrated balance.

9.4 Determine the length of the central rod for insertion into the compaction mold, $L_{central\ rod}$, m (in.).

9.5 Determine the values of a and b for the soils to be tested in the field by procedures in Annex A2.

10. Procedure

10.1 Measure the apparent length in place:

10.1.1 Prepare the surface at the test location so that it is plane and level.

10.1.2 Seat the MRP guide template on the plane surface.

10.1.3 Drive the outer spikes through the guide holes so that the bottom surfaces of the spike heads touch the template. Drive the central spike last. (See Fig. 5)

10.1.4 Remove the template as shown in Fig. 6. Check that all spikes are driven properly without any air gap around the spikes where they penetrate the soil.

10.1.5 Connect the coaxial cable to the CH and the TDR device. Turn on the device.

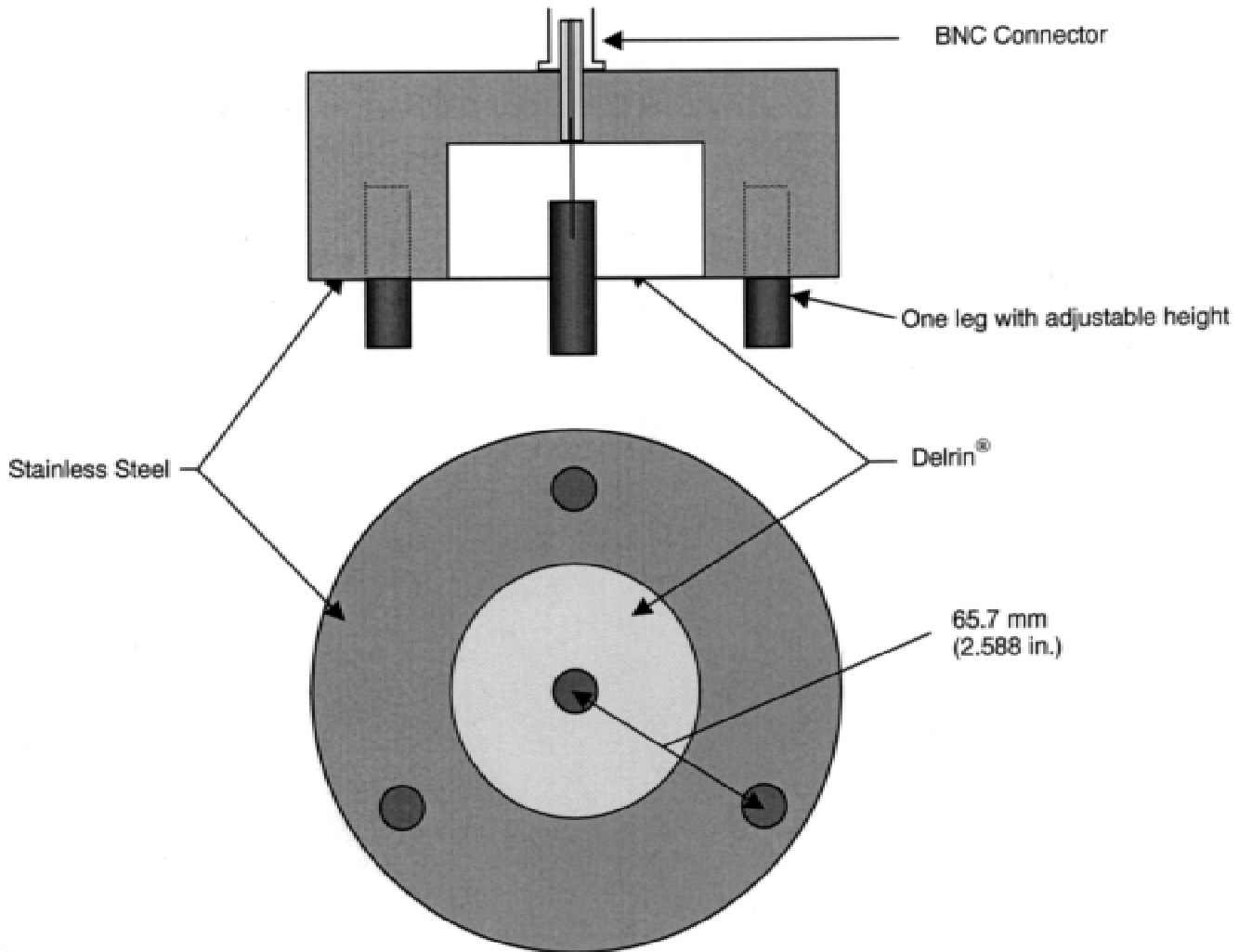


FIG. 3 Coaxial Head (CH)

10.1.6 Wipe the top surfaces of the spike heads and ends of the studs on the CH and place the CH on the spikes, centering the CH on the heads of all the spikes as shown in Fig. 7.

10.1.7 Determine and record the apparent length, l_{insitu} , m (in.) with the TDR equipment.⁷

10.1.8 Remove the spikes using the pliers.

10.2 Measure the apparent length in the cylindrical mold:

10.2.1 Assemble and secure the cylindrical mold to the base plate and attach the ring collar.

10.2.2 With the use of the power drill or other suitable digging implement, dig out soil from the between the holes left by the outer rods of the MRP and to a depth corresponding to the rod penetration and place the soil into the cylindrical mold in 6 uniform lifts applying 10 blows per lift using the aluminum-tamping rod. Soil should be taken uniformly over the entire depth of in-place measurement and placed directly and quickly into the cylindrical mold to minimize moisture

loss. Remove the ring collar and strike the surface level with the straight edge after compaction. Remove any spilled soil from around the exterior of the base plate with the brush.

10.2.3 Make sure the balance is leveled, measure and record the mass of the soil-filled cylindrical mold including the base plate, M_1 , kg (lbf).

10.2.4 Mount the cylindrical mold guide template on to the cylindrical mold.

10.2.5 Using the brass-headed or resin-headed hammer, drive the central rod through the guide hole into the soil until the top of rod is flush with the template.

10.2.6 Remove the guide template from the cylindrical mold.

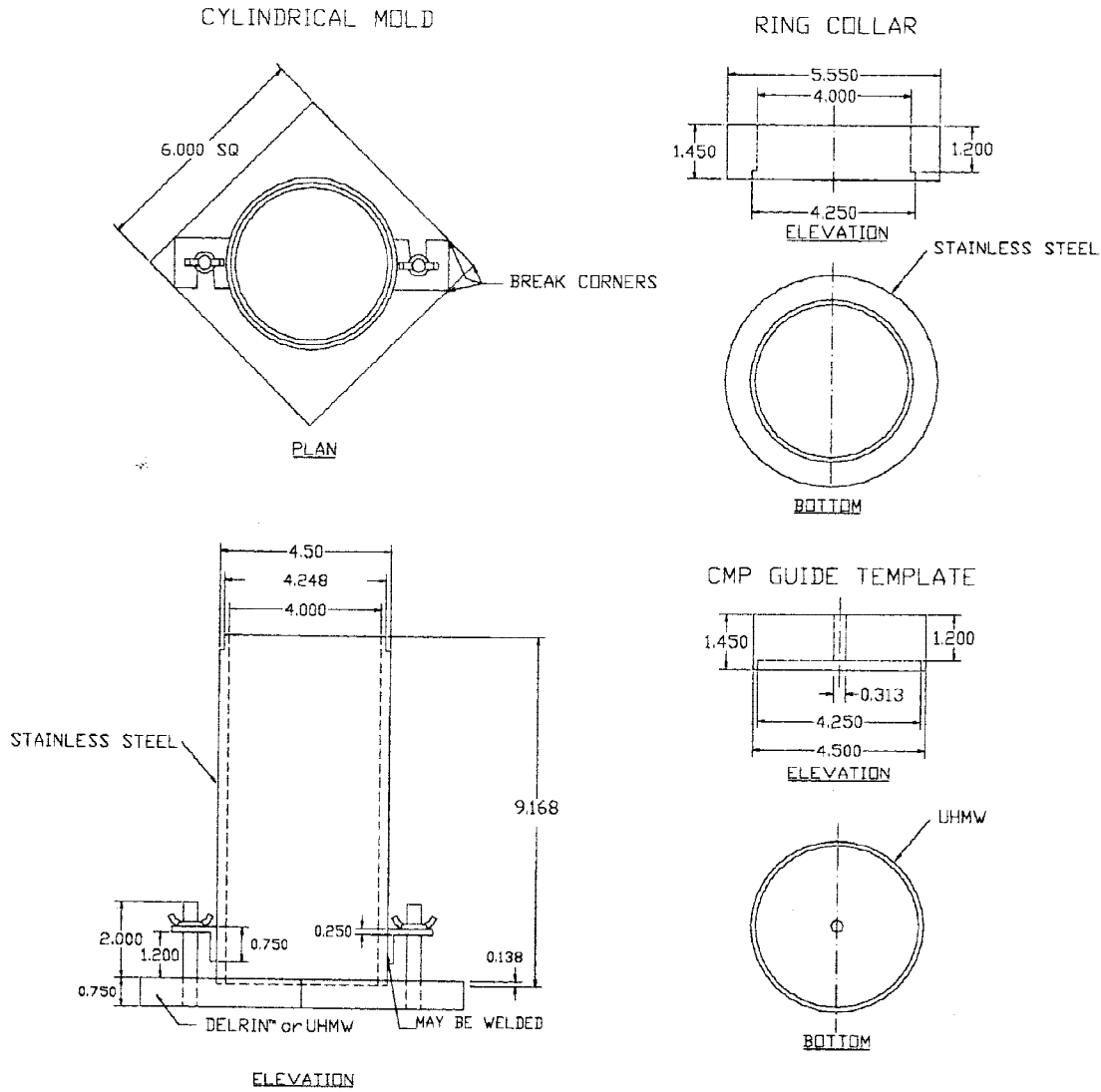
10.2.7 Determine and record the length of the central rod above the soil surface, $L_{rod\ exposed}$, m (in.).

10.2.8 Place the ring collar on the cylindrical mold.

10.2.9 Wipe the top surface of the ring collar, the central rod and the ends of studs of the CH and then place the CH on the ring collar, centering the central stud on the central rod as shown in Fig. 8.

10.2.10 Determine and record the apparent length, l_{mold} , m, with the TDR device.⁷

⁷ Automated procedures for doing this are usually contained in a program on the portable computer. Algorithms for various procedures are discussed by Baker and Allmaras (1990), Feng et al. (1998), Heimovaara and Bouten (1990), and Wraith, J.M., and Or, D., (1999).



Note: All dimensions are in inches. See Table 2 for metric equivalents and tolerances.

Note—All dimensions are in inches. See Table 2 for metric equivalents.

FIG. 4 Cylindrical Mold, Ring Collar, and Guide Template

TABLE 2 Metric Equivalents for Dimensions in Fig. 4

(in.)	Tol. (in.)	(mm)	Tol. (mm)
0.138	± 0.005	3.50	± 0.13
0.250	± 0.005	6.30	± 0.13
0.313	+ 0.002, - 0.000	7.88	+ 0.05, - 0.00
0.750	± 0.010	18.90	± 0.25
1.000	± 0.010	25.00	± 0.25
1.200	± 0.002	30.24	± 0.05
1.450	± 0.005	36.54	± 0.13
2.000	± 0.020	50.00	± 0.50
4.000	± 0.016	100.00	± 0.40
4.248	+ 0.000, - 0.003	107.90	+ 0.00, - 0.08
4.250	+ 0.003, - 0.000	107.95	+ 0.08, - 0.00
4.500	± 0.020	115.00	± 0.50
5.500	± 0.020	140.00	± 0.50
6.000	± 0.020	150.00	± 0.50
9.168	± 0.020	231.00	± 0.50



FIG. 5 Driving Spikes Through Template



FIG. 6 Removal of Template After Driving Spikes



FIG. 7 Placement of Coaxial Head on Spikes

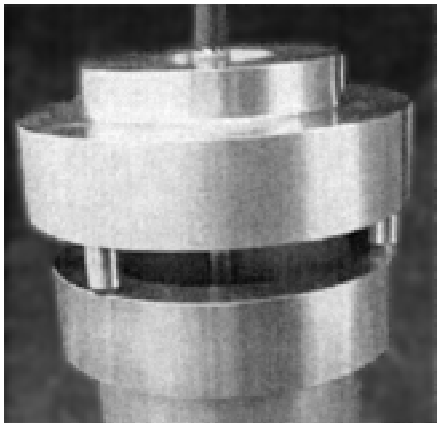


FIG. 8 Coaxial Head on Ring Collar

10.2.11 Remove the central rod from the mold.

10.2.12 If the soil is a cohesive soil and if the temperature of the soil is estimated to be outside the range of 15 to 25°C (59 to 77°F), insert a metal thermometer into the hole created by the central rod, wait until the temperature stabilizes, and record the temperature, °C.

10.2.13 Remove the soil from the cylindrical mold.

11. Calculation or Interpretation of Results

11.1 Calculate the apparent dielectric constant of the soil in place as follows:

$$K_{insitu} = \left(\frac{(l_a)_{insitu}}{L_{insitu}} \right)^2 \quad (1)$$

where:

K_{insitu} = apparent dielectric constant of the soil in place,
 $(l_a)_{insitu}$ = measured apparent length insitu, m (in.), and
 L_{insitu} = length of the spikes inserted into the soil, m (in.).

11.2 Calculate the dielectric constant of the soil in the mold as follows:

$$K_{mold} = \left(\frac{(l_a)_{mold}}{L_{mold}} \right)^2 \quad (2)$$

where:

K_{mold} = apparent dielectric constant of soil in the mold,
 $(l_a)_{mold}$ = measured apparent length in the mold, m (in.), and
 L_{mold} = length of the rod inserted into the soil in the mold, m (in.)
 $= L_{central\ rod} - L_{rod\ exposed}$

11.3 Calculate the wet density of the soil in mold as follows:

$$\rho_{t,mold} = \frac{M_1 - M_2}{V_{mold}} \quad (3)$$

where:

$\rho_{t,mold}$ = wet density of the soil in the mold, kg/m³(lbf/ft³),
 M_1 = mass of the soil-filled mold, and base plate, kg (lbf),
 M_2 = mass of the empty mold and base plate, kg (lbf),
 V_{mold} = volume of the mold, m³(ft³).

11.4 Calculate the Apparent Dielectric Constant of the soil in the mold at 20°C from:

$$K_{mold,20^\circ C} = K_{mold,T^\circ C} \times TCF \quad (4)$$

where:

TCF = Temperature Correction Factor,
 $= 0.97 + 0.0015 T_{mold,T^\circ C}$ for cohesionless soils, 4°C
 $\leq T_{mold,T^\circ C} \leq 40^\circ C$
 $= 1.10 - 0.005 T_{mold,T^\circ C}$ for cohesive soils,
 $4^\circ C \leq T_{mold,T^\circ C} \leq 40^\circ C$.

11.5 Calculate the water content of the soil in the mold and in place as follows:

$$w_{insitu} = w_{mold} = \frac{\sqrt{K_{mold,20^\circ C}} - \frac{a\rho_{t,mold}}{\rho_w}}{\frac{b\rho_{t,mold}}{\rho_w} - \sqrt{K_{mold,20^\circ C}}} \times 100 \quad (5)$$

where:

w_{mold} = water content of the soil in the mold, %,
 w_{insitu} = water content of the soil in place, %,
 ρ_w = density of water = 1000 kg/m³(62.4 lbf/ft³),
 a = calibration constant, (see Annex A2), and
 b = calibration constant, (see Annex A2).

11.6 Calculate the in place dry density of the soil as follows:

$$\rho_{d,insitu} = \frac{\sqrt{K_{insitu}}}{\sqrt{K_{mold}}} \times \frac{\rho_{t,mold}}{1 + \frac{w_{mold}}{100}} \quad (6)$$

where:

$\rho_{d,insitu}$ = dry density of the soil in place, kg/m³(lbf/ft³).

12. Report

- 12.1 The report shall include the following:
- 12.1.1 Test site identification.
 - 12.1.2 Date and time of test.
 - 12.1.3 Name of the operator(s).
 - 12.1.4 Make, model and serial number of the TDR apparatus.
 - 12.1.5 Average length of the spikes that penetrated into the soil surface in the in-place test, L_{insitu} , m (in.).
 - 12.1.6 Volume of the cylindrical mold, V_{mold} , m³(ft³).
 - 12.1.7 Length of the central rod, $L_{central\ rod}$, m (in.), the length of the central rod exposed, $L_{rod\ exposed}$, m (in.), and inserted length of the central rod in the mold, L_{mold} , m (in.).
 - 12.1.8 Temperature of the soil in the mold, T_{mold} , °C.
 - 12.1.9 Visual description of material tested.
 - 12.1.10 Values of apparent dielectric constant for the in-place test, K_{insitu} and the test in the mold, K_{mold} .
 - 12.1.11 Water content in percent, w , from Eq 5.
 - 12.1.12 Dry density of the soil in place, $\rho_{d,insitu}$, kg/m³(lb/ft³) from Eq 6.

- 12.1.13 Calibration constants a and b .
- 12.1.14 Other comments as appropriate.

13. Precision and Bias

13.1 *Precision*—Test data on precision is not presented due to the nature of this test method. It is either not feasible or too costly at this time to have ten or more agencies participate in an in situ testing program at a given site. The Subcommittee (D18.08) is seeking any data from the users of this test method that might be used to make a limited statement on precision.

13.2 *Bias*—There is no accepted reference values for this test method, therefore, bias cannot be determined.

NOTE 2—Guidance is available in Ref 7 for determining test variability for a given soil from laboratory tests simulating field tests.

14. Keywords

14.1 compaction test; construction control; density; dielectric constant; electrical permittivity; electromagnetic waves; field control; field tests; inspection; moisture content; quality control; soil compaction; soil density; time domain reflectometry; water content

ANNEXES

(Mandatory Information)

A1. VOLUME OF CYLINDRICAL MOLD

A1.1 Scope

A1.1.1 This annex describes the procedure for determining the volume of a compaction mold.

A1.1.2 The volume is determined by a water-filled method and checked by a linear-measurement method.

A1.2 Apparatus

A1.2.1 In addition to the apparatus listed in Section 7 the following items are required:

A1.2.1.1 *Vernier or Dial Caliper*, having a measuring range of at least 0 to 250-mm (0 to 10-in.) and readable to at least 0.02-mm (0.001-in.).

A1.2.1.2 *Inside Micrometer*, having a measuring range of at least 100 to 150-mm (4 to 5-in.) and readable to at least 0.02-mm (0.001-in.).

A1.2.1.3 *Plastic or Glass Plates*, two plastic or glass plates approximately 200 by 200 by 6-mm thick (8 by 8 by ¼-in. thick).

A1.2.1.4 *Thermometer*, 0 to 50°C range, 0.5°C graduations, conforming to the requirements of Specification E 1.

A1.2.1.5 *Stopcock Grease*, or similar sealant.

A1.2.1.6 *Miscellaneous Equipment*, bulb syringe, towels, etc.

A1.3 Precautions

A1.3.1 Perform this method in an area isolated from drafts or extreme temperature fluctuations.

A1.4 Procedure

A1.4.1 *Water-Filling Method*:

A1.4.1.1 Lightly grease the bottom of the compaction mold and place it on one of the plastic or glass plates. Lightly grease the top of the mold. Be careful not to get grease on the inside of the mold. If it is necessary to use the base plate, place the greased mold onto the base plate and secure with the locking studs.

A1.4.1.2 Determine the mass of the greased mold and either plastic or glass plates to the nearest 1-g (0.01-lbm) and record. When the base plate is being used in lieu of the bottom plastic or glass plate determine the mass of the mold, base plate and a single plastic or glass plate to be used on top of the mold to the nearest 1-g (0.01-lbm) and record.

A1.4.1.3 Place the mold and the bottom plastic or glass plate on a firm, level surface and fill the mold with water to slightly above its rim.

A1.4.1.4 Slide the second plate over the top surface of the mold so that the mold remains completely filled with water and air bubbles are not entrapped. Add or remove water as necessary with a bulb syringe.

A1.4.1.5 Completely dry any excess water from the outside of the mold and plates.

A1.4.1.6 Determine the mass of the mold, plates and water and record to the nearest 1-g (0.01-lbm).

A1.4.1.7 Determine the temperature of the water in the mold to the nearest 1°C and record. Determine and record the absolute density of water from Table A1.1.

TABLE A1.1 Density of Water^A

Temperature, °C (°F)	Density of Water, g/ml
18 (64.4)	0.99862
19 (66.2)	0.99843
20 (68.0)	0.99823
21 (69.8)	0.99802
22 (71.6)	0.99779
23 (73.4)	0.99756
24 (75.2)	0.99733
25 (77.0)	0.99707
26 (78.8)	0.99681

^AValues other than shown may be obtained by referring to the Handbook of

A1.4.1.8 Calculate the mass of water in the mold by subtracting the mass determined in A1.4.1.2 from the mass determined in A1.4.1.6.

A1.4.1.9 Calculate the volume of water by dividing the mass of water by the density of water and record to the nearest 1 cm³ (0.0001 ft³).

A1.4.1.10 When the base plate is used for the calibration of the mold volume repeat A1.4.1.3-A1.4.1.9.

A1.4.2 Linear Measurement Method:

A1.4.2.1 Using either the vernier caliper or the inside micrometer, measure the diameter of the mold 6 times at the top of the mold and 6 times at the bottom of the mold, spacing each of the six top and bottom measurements equally around the circumference of the mold. Record the values to the nearest 0.02-mm (0.001-in.).

A1.4.2.2 Using the vernier caliper, measure the inside height of the mold by making three measurements equally spaced around the circumference of the mold. Record values to the nearest 0.02-mm (0.001-in.).

A1.4.2.3 Calculate the average top diameter, average bottom diameter and average height.

A1.4.2.4 Calculate the volume of the mold and record to the nearest 1 cm³ (0.0001 ft³) as follows:

$$V = \frac{\pi(d_t + d_b)^2 h}{16} \times \left(\frac{1 \text{ ft}^3}{1728 \text{ in.}^3} \right) \text{ (inch-pound system)} \quad (\text{A1.1})$$

$$V = \frac{\pi(d_t + d_b)^2 h}{16} \times \left(\frac{1 \text{ m}^3}{10^9 \text{ mm}^3} \right) \text{ (SI system)} \quad (\text{A1.2})$$

where:

V = volume of mold, m³(ft³),

h = average height, mm (in.),

d_t = average top diameter, mm (in.), and

d_b = average bottom diameter, mm (in.).

A1.5 Comparison of Results

A1.5.1 The volume obtained by either method should be within the volume tolerance requirements of 6.1.1 and 6.1.2.

A1.5.2 The difference between the two methods should not exceed 0.5 % of the nominal volume of the mold.

A1.5.3 Repeat the determination of volume if these criteria are not met.

A1.5.4 Failure to obtain satisfactory agreement between the two methods, even after several trials, is an indication that the mold is badly deformed and should be replaced.

A1.5.5 Use the volume of the mold determined using the water-filling method as the assigned volume value for calculating the wet density (see 11.3).

A2. DETERMINATION OF PARAMETERS *a* AND *b*

A2.1 Scope

A2.1.1 This annex describes the procedure for determining the soil specific parameters *a* and *b* for use in Eq 5 of Section 11.

A2.1.2 The determination requires that five tests at different water contents be performed using the cylindrical mold probe.

A2.2 Apparatus

A2.2.1 See items 7.1, 7.3, 7.4, 7.5, 7.6, 7.7, and 7.9.

A2.3 Precautions

A2.3.1 Perform this method in an area where the ambient temperatures and the temperature of the soil are within the range of 15 to 25°C (59 to 77°F).

A2.4 Procedure

A2.4.1 Air-dry the soil sample.

A2.4.2 Thoroughly break up the soil clumps in such a manner as to avoid breaking individual particles. Pass the material through a No. 4 sieve.

A2.4.3 Prepare five specimens having water contents such that they bracket the estimated field water content and vary by about 2 %. Preparation procedure should be as specified in section 10.2 or 10.3 of Test Methods D 698.

A2.4.4 Determine the volume of the cylindrical mold in accordance with Annex A1.

A2.4.5 Determine and record the mass of the cylindrical mold and base plate, and the length of the central rod.

A2.4.6 Assemble and secure the cylindrical mold and ring collar to the base plate.

A2.4.7 Place the soil into cylindrical mold in 6 uniform lifts applying 10 blows per lift using the aluminum-tamping rod. Remove the ring collar and strike the surface level with the straight edge after compaction. Remove any soil from around the exterior of the base plate with the brush.

A2.4.8 Do procedure 10.2.3-10.2.13.

A2.4.9 Remove the soil from the cylindrical mold. Obtain a portion of the sample for water content determination by slicing the compacted specimen axially through the center and

removing at least 0.500 kg (1 lbf) of soil from the cut faces. Obtain the water content in accordance with Test Method D 2216.

A2.4.10 Repeat A2.5.5 to A2.5.8 for each soil specimen.

A2.5 Calculation

A2.5.1 For each of the soil specimens, calculate the dielectric constant of soil in the cylindrical mold (K_{mold}) using Eq 2.

A2.5.2 Calculate water content, $w_{oven\ dry}$, in accordance with Test Method D 2216.

A2.5.3 Calculate the wet density of the soil in the cylindrical mold using Eq 3.

A2.5.4 Calculate the dry density of the soil in the cylindrical mold as follows:

$$\rho_d = \frac{\rho_t}{1 + \frac{w_{oven\ dry}}{100}} \quad (A2.1)$$

where:

- ρ_d = dry density of the soil in the cylindrical mold, kg/m^3 (lbf/ft^3),
- ρ_t = wet density of the soil in the cylindrical mold, kg/m^3 (lbf/ft^3), and

$w_{oven\ dry}$ = oven dry water content from step A2.5.2, %.

A2.5.5 Calculate the calibration coefficients as follows:

$$\text{Plot } \sqrt{K_{mold}} \frac{\rho_w}{\rho_d} \text{ vs. } w_{oven\ dry} \quad (A2.2)$$

where:

- K_{mold} = dielectric constant of soil in the cylindrical mold,
- ρ_d = dry density of the soil in the cylindrical mold, kg/m^3 (lbf/ft^3), from Eq A2.1,
- ρ_w = density of water = 1000 kg/m^3 (62.4 lbf/ft^3), and
- $w_{oven\ dry}$ = oven dry water content, %, from step A2.4.2.

A2.5.6 Find the zero intercept and slope of the best-fit straight line where:

- a = zero intercept of the best-fit straight line, and
- b = slope of the best-fit straight line.

NOTE A2.1—Values of a typically are between 0.7 and 1.8 and values of b are typically between 7.5 and 11 for commonly encountered natural soils.

REFERENCES

- (1) Baker, J. M., and Allmaras, R. W., "System for Automating and Multiplexing Soil Moisture Measurement by Time-Domain Reflectometry," *Journal of the Soil Science Society of America*, Vol 54, 1990, pp. 1-6.
- (2) Feng, W., Lin, C. P., Drnevich, V. P., and Deschamps, R. J., "Automation and Standardization of Measuring Moisture Content and Density Using Time Domain Reflectometry," Report No.: FHWA/IN/JTRP-98/4, Joint Transportation Research Program, Indiana Department of Transportation—Purdue University, September 1998, p. 122.
- (3) Feng, W., Lin, C. P., Deschamps, R. J., and Drnevich, V. P., "Theoretical Model of a Multi-Section TDR Measurement System," *Water Resource Research*, Vol 35, No. 8, August 1999, pp. 2321-2331.
- (4) Heimovaara, T. J., and Bouten, W., "A Computer-Controlled 36-Channel Time Domain Reflectometry System for Monitoring Soil Water Contents," *Water Resources Research*, Vol 26, 1990, pp. 2311-2316.
- (5) Lin, C. P., Drnevich, V. P., Feng, W., and Deschamps, R. J., "Time Domain Reflectometry For Compaction Quality Control," Presented at and publication in *Proc. GeoDenver2000, Use of geophysical methods in construction*, Soheil Nazarian and John Diehl, Editors, Geotechnical Special Publication No. 108, ASCE GeoInstitute Conference, Denver Colorado, August 5-8, 2000, pp. 15-34.
- (6) Lin, C. P., Siddiqui, S. I., Feng, W., Drnevich, V. P., and Deschamps, R. J., "Quality Control of Earth Fills Using Electromagnetic Waves," *Constructing and Controlling Compaction of Earth Fills, ASTM STP 1384*, D. W. Shanklin, K. R. Rademacher, and J. R. Talbot, Eds., American Society for Testing and Materials, West Conshohocken, PA, 2000, pp. 290-310.
- (7) Siddiqui, S. I., and Drnevich, V. P., "A New Method of Measuring Density and Moisture Content of Soil Using the Technique of Time Domain Reflectometry," Report No.: FHWA/IN/JTRP-95/9, Joint Transportation Research Program, Indiana Department of Transportation—Purdue University, February 1995, p. 271.
- (8) Siddiqui, S. I., Drnevich, V. P., and Deschamps, R. J., "Time Domain Reflectometry Development for Use in Geotechnical Engineering," *Geotechnical Testing Journal*, GTJODJ, Vol 23, No. 1, March 2000, pp. 9-20.
- (9) Wraith, J. M., and Or, D., "Temperature Effects on Soil Bulk Dielectric Permittivity Measured by Time Domain Reflectometry: Experimental Evidence and Hypothesis Development," *Water Resources Research*, Vol 35, No. 2, February 1999, pp. 361-369.

ASTM International takes no position respecting the validity of any patent rights asserted in connection with any item mentioned in this standard. Users of this standard are expressly advised that determination of the validity of any such patent rights, and the risk of infringement of such rights, are entirely their own responsibility.

This standard is subject to revision at any time by the responsible technical committee and must be reviewed every five years and if not revised, either reapproved or withdrawn. Your comments are invited either for revision of this standard or for additional standards and should be addressed to ASTM International Headquarters. Your comments will receive careful consideration at a meeting of the responsible technical committee, which you may attend. If you feel that your comments have not received a fair hearing you should make your views known to the ASTM Committee on Standards, at the address shown below.

This standard is copyrighted by ASTM International, 100 Barr Harbor Drive, PO Box C700, West Conshohocken, PA 19428-2959, United States. Individual reprints (single or multiple copies) of this standard may be obtained by contacting ASTM at the above address or at 610-832-9585 (phone), 610-832-9555 (fax), or service@astm.org (e-mail); or through the ASTM website (www.astm.org).