



Designation: F 1169 – 9903

## Standard Specification for Full-Size Baby Crib<sup>1</sup>

This standard is issued under the fixed designation F 1169; the number immediately following the designation indicates the year of original adoption or, in the case of revision, the year of last revision. A number in parentheses indicates the year of last reappraisal. A superscript epsilon ( $\epsilon$ ) indicates an editorial change since the last revision or reappraisal.

### INTRODUCTION

This consumer safety specification addresses crib accidents that were identified by the U.S. Consumer Product Safety Commission (CPSC).

~~For the period Jan. 1, 1980 through Dec. 31, 1983, 167~~

~~CPSC received reports of strangulations incidents associated with crib corner post extensions and incidents concerning failure of crib hardware and other structural components of cribs were reported to the CPSC. These incidents accounted for 34 deaths, 22 potentially fatal entrapments, 7 medically treated injuries, 47 minor injuries such as bumps and bruises and 57 incidents without injury. Additional incidents of a similar nature have been reported subsequent to this period, that also resulted in fatalities~~

In response to the accident data collected by the CPSC, this consumer safety specification attempts to minimize the risk of injury or death due to: failure of mattress support hardware, failure of glued or bolted connections, dropside latch failure, and dislodgment of teething rails. This safety specification also addresses incidents associated with poor maintenance or assembly by means of requirements for the contents of instructional literature that must accompany a crib.

### 1. Scope

1.1 This consumer safety specification establishes ~~testing performance requirements for~~ and test procedures to determine the structural integrity of cribs. It also ~~provides~~ contains design requirements addressing entanglement on crib corner post extensions, ~~and requirements for labelling warning labels and instructional material.~~

~~1.2 The issue of mattress support system is addressed to reduce or eliminate the likelihood of the support system becoming inadvertently disengaged.~~

~~1.3 No~~

1.2 No crib produced after the approval date of this consumer safety specification shall, either by label or other means, indicate compliance with this specification unless it conforms to all requirements contained herein.

1.4<sup>3</sup> The following safety hazards caveat pertains only to the test methods portion, ~~Sections 5-9, Section 7,~~ of this specification: *This standard does not purport to address all of the safety concerns, if any, associated with its use. It is the responsibility of the user of this standard to establish appropriate safety and health practices and determine the applicability of regulatory limitations prior to use.*

### 2. Referenced Document

2.1 *Federal Standard:*

16 CFR 1303 Ban of Lead-Containing Paint and Certain Consumer Products Bearing Lead-Containing Paint

16 CFR 1500.50–.52 Test Methods for Simulating Use and Abuse of Toys and Other Articles Intended for Use by Children

16 CFR 1501 Method for Identifying Toys and Other Articles Intended for Use by Children Under Three Years of Age Which Present Choking, Aspiration or Ingestion Hazards Because of Small Parts

<sup>1</sup> This specification is under the jurisdiction of ASTM Committee F-15 on Consumer Products and is the direct responsibility of Subcommittee F 15.18 Cribs, Toddler Beds, and Play Yards, Bassinets, Cradles, and Changing Tables.

Current edition approved April Aug. 10, 1999; 2003. Published July 1999; Aug. 2003. Originally published as F 1169–88; approved in 1988. Last previous edition F 1169–88 (1993); approved in 1999 as F 1169–99.

16 CFR 1508 Requirements for Full-Size Baby Cribs<sup>2</sup>

### 3. Terminology

3.1 *drop side/drop gate, n*—a side that is intended to slide with respect to the frame when the product is in the manufacturer’s recommended use position to provide easier access to the occupant.

3.2 *dynamic load, n*—application of an impulsive force by a free falling mass.

3.3 *folding side, n*—a side, or a part thereof, that is intended to fold with respect to the frame when the product is in the manufacturer’s recommended use position to provide easier access to the occupant.

3.4 *full-size crib, n*—a bed that is designed to provide sleeping accommodations for an infant having interior dimensions of 28 ± 5/8 in. (710 ± 16 mm) wide and 52 3/8 ± 5/8 in. (1330 ± 16 mm) long.

3.5 *occupant, n*—that individual who is in the product when it is setup in one of the manufacturer’s use positions.

3.6 *static load, n*—a vertically downward force applied by a calibrated force gage or by dead weights.

3.7 *stationary side, n*—a side or end panel that is not intended to fold, slide or move with respect to the frame when the product is in the manufacturer’s recommended use position.

3.8 *structural failure, n*—damage to a component(s) or assembly resulting in partial separation (greater than 0.040 in. (1.00 mm) over original configuration), or complete separation of the component(s) or assembly.

### 4. Calibration and Standardization

34.1 All testing shall be conducted on a concrete floor which may be covered with 1/8-in. (3-mm) thick vinyl floor covering.

34.2 The crib shall be completely assembled, unless otherwise noted, in accordance with the manufacturer’s instructions.

### 4. Conditioning

4.1 No

4.3 No testing shall be conducted within 48 h of gluing.

4.24 The item to be tested shall be in a room with ambient temperature of 73.4 ± 9°F (23 ± 5°C) for at least 24 h prior to testing. Testing shall then be conducted within this temperature range.

## TEST METHODS

### 5. Vertical Impact Testing

5.1 ~~General~~—This test consists ~~General Requirements~~

5.1 Before performing any of dropping a specified weight repeatedly onto a foam pad supported by the crib mattress support system, tests in this specification all wood parts shall be smooth and free of splinters.

5.2 ~~Significance and Use~~—This test assists in evaluating ~~Surface Coatings~~—The paint or surface coating on the structural integrity of the crib assembly. Glue joints and other means of fastening are subjected to abusive loads and stresses. product shall comply with 16 CFR 1303.

5.3 ~~Small Parts~~—There shall be no small parts as defined by 16 CFR 1501 before testing or liberated as a result of testing to this specification.

5.4 ~~Corner Posts:~~

5.4.1 No corner post assembly shall extend more than 0.06 in. (1.50 mm) above the upper edge of an end or side panel, whichever is higher, when measured from the lowest point on the upper edge of the end or side panel within 3 in. (76 mm) from the outermost contour of the post or elbow (see Fig. 1).

5.4.1.1 This requirement applies when any drop side/drop gate is in either the raised or lowered position.

5.4.2 The limitations in 5.4.1 do not apply to a corner post assembly that extends at least 16 in. (400 mm) above the uppermost surface of the side rail in its highest position.

5.4.3 Corner posts intended to accept removable vertical extensions made up of two or more segments (such as canopy post extensions) shall not permit the attachment of individual segments such that the resultant vertical extension would be in violation of the dimensional requirements of 5.4.

### 6. Performance Requirements

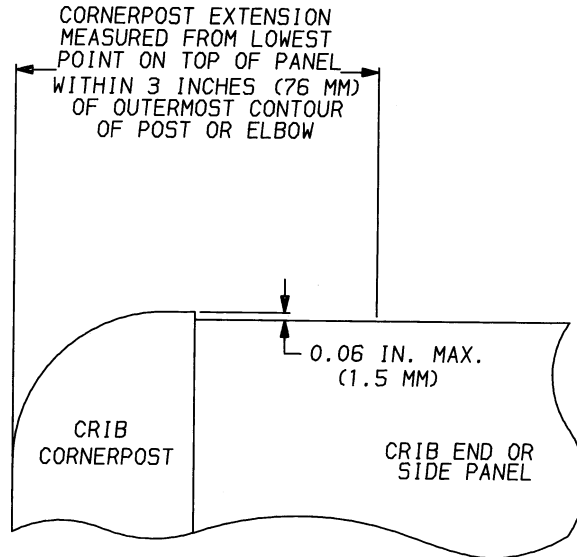
6.1 ~~Mattress Support System Vertical Impact Test Requirements:~~

6.1.1 After testing in accordance with the procedure in 7.1, the crib shall comply with 16 CFR Part 1508. Components attached by screws shall not have separated by more than 0.04 in. (1.00 mm) upon completion of testing.

6.2 ~~Crib Side Test Requirements :~~

6.2.1 After completion of the cyclic and static portions of either the drop side or stationary side test as appropriate, the crib shall comply with 16 CFR Part 1508 and no spindles or slats shall have completely separated from the top or bottom rail. Complete

<sup>2</sup> Available from the Consumer Product Safety Commission, Washington, DC 20207.



**FIG. 1 Illustration of Requirements for Crib Corner Post Extensions**

separation shall be determined by placing a right triangular prism shaped wedge (see Fig. 1 in 16 CFR Part 1508) between two spindles or slats adjacent to the rail from which these have separated and applying a 20-lbf (90-N) pull force to the wedge in a direction normal to the plane of the crib side. If a spindle or slat moves away from the hole in the rail in which it was formerly secured, complete separation has occurred.

6.2.2 Components attached by screws shall not have separated by more than 0.04 in. (1 mm) upon completion of testing.

6.2.3 Any spindles or slats that could be rotated during the torque test shall comply with the spacing of crib components at 16 CFR Section 1508.4 when turned to their most adverse position.

6.2.4 Breakage of a wooden crib side component in any location other than a joint during testing does not constitute a failure. However, if this type of breakage should occur, an additional side must be tested.

NOTE 1—A wood failure within a joint does constitute a test failure.

### 6.3 *Mattress Support System Test Requirement:*

6.3.1 When tested in accordance with the procedure in 7.3, the mattress support system shall not detach from the crib at any point of attachment, or the force applied in 7.3.3.6 cannot be maintained for 10 s.

### 6.4 *Crib Side Latch Test Requirements :*

6.4.1 The latching mechanism securing a drop or folding side of a crib shall automatically engage when the side is placed in the normal use position.

6.4.2 The latching mechanism shall not disengage during the tests conducted in accordance with the procedure in 7.4.4 or 7.4.5 (whichever is appropriate), and shall continue to function in the intended manner upon completion of the tests.

6.5 *Plastic Teething Rail Test Requirement*—The feeler gage specified in 7.5.2.1 shall not enter any gap created by the deflection or deformation, or both, of the plastic teething rail resulting from the application of a 50-lbf (222-N) vertically downward force.

## 7. Test Methods

### 7.1 *Mattress Support System Vertical Impact Test*

7.1.1 *General*—This test consists of dropping a specified weight repeatedly onto a foam pad supported by the crib mattress support system. The test assists in evaluating the structural integrity of the crib assembly. Glue joints and other means of fastening are subjected to abusive loads and stresses.

#### 7.1.2 *Apparatus for Vertical Impact Testing:*

5.3.1 The

7.1.2.1 Test frame (see Fig. 2).

7.1.2.2 A weight used in conducting this test shall have a flat circular contact area of 1 ft<sup>2</sup> (930 cm<sup>2</sup>) (13.5-in. (343-mm) diameter) (343 mm) with a 0.125-in. (3-mm) radius to ease the edge between the circular contact surface and the vertical cylindrical surface.

5.3.1.1 The

7.1.2.3 The total weight shall be 45 lb (20.4 kg).

5.3.1.2.4 The weight shall pivot freely.

5.3.1.2.5 A 4-in. (100-mm) thick open cell polyurethane foam pad having a density of 1 lb/ft<sup>3</sup> (16 kg/m<sup>3</sup>) covered with a 5 to 15 gage vinyl material (tick) shall be used to represent a mattress.

5.4

7.1.3 Procedure for Vertical Impact Testing of Full-Size Cribs:

5

7.41.3.1 Casters shall not be installed on crib (See Fig. 1):

5.4.2 The crib shall be prevented from sliding in a manner that does not prevent changes of angle that may take place in the crib structure (see Fig. 2 3).

57.41.3.2 The crib shall be prevented from sliding in a manner that does not prevent changes of angle that may take place in the crib structure (see Fig. 3).

7.1.3.3 All testing shall be conducted with the mattress support in the lowest position.

57.41.3.4 Allow the weight to free fall 6 in. (1520 mm) on to the upper surface of the foam pad at a rate of  $4 \pm 1$  seconds per cycle s/cycle for the following number of cycles:

5.4.4.1 500

7.1.3.5 500 cycles within ¼ in. (6.4 mm) of the geometric center of the mattress area.

5.4.4.2 100

7.1.3.6 100 cycles at each of two diagonally opposite corners, centered 9 in. (230 mm) from the crib sides forming the corner.

5.5 Vertical Impact Testing Requirements

7.2 Crib Side Test:

5.5.1 After testing, the crib shall comply with Title 16 CFR Part 1508:

5.5.2 Components attached by screws shall not have separated by more than 0.04 in. (1 mm) upon completion of testing:

6. Crib Side Testing

6.1

7.2.1 General:

6.1.1 This— This test consists of repeatedly impacting a crib side bottom rail with by a specified weight.

6.1.2 After weight. After completing the cyclic testing, structural integrity is tested by applying a static pull to the side assembly followed by a torque test of each spindle or slat.

6.2 Significance and Use—See 5.2:

6.3

7.2.2 Apparatus for Crib Side Cyclic Testing —The apparatus for the cyclic test (see Fig. 3 4) includes the following:

67.32.2.1 A 30-lb (13.6-kg) weight.

67.32.2.2 A 0.375-in. (9-mm) thick 30 Type A durometer rubber pad large enough to cover the impact area.

67.32.2.3 SThree support trough (see Fig. 4 5) for drop side test only.

NOTE 12—For tests of metal cribs, an additional support trough may be used to support the center of the top rail if necessary to avoid deformation.

67.32.2.4 Two vertical stops (see Fig. 5 6) for drop side only.

67.32.2.5 Impactor with a width of 1 in. (25 mm) and sufficient length to extend across the full width of the bottom rail.

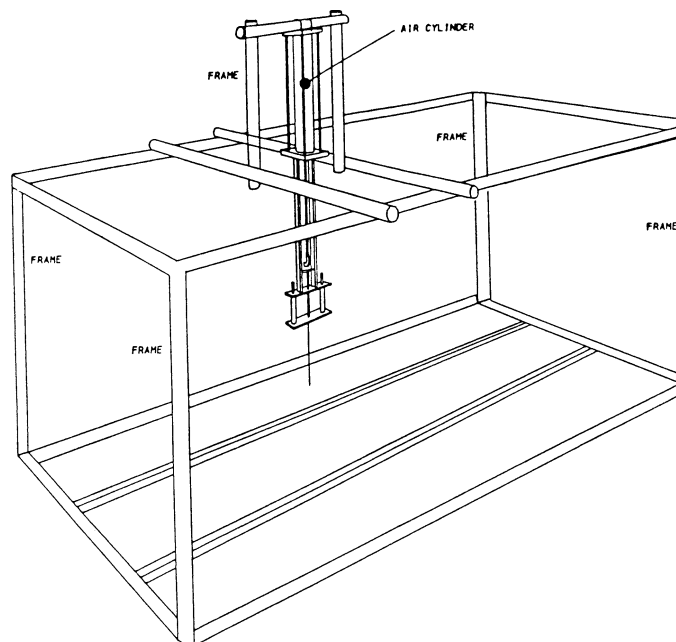


FIG. 1 2 Typical Test Frame

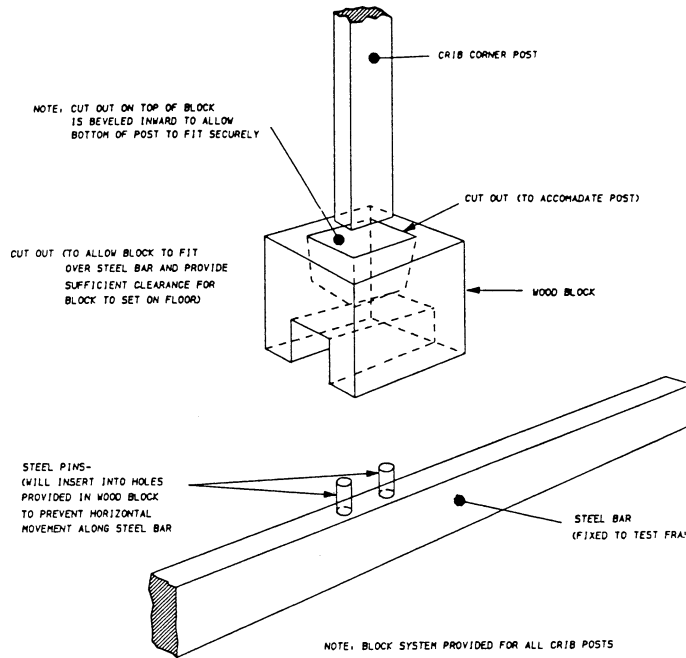


FIG. 2.3 Typical Crib Corner Post Positioning Block

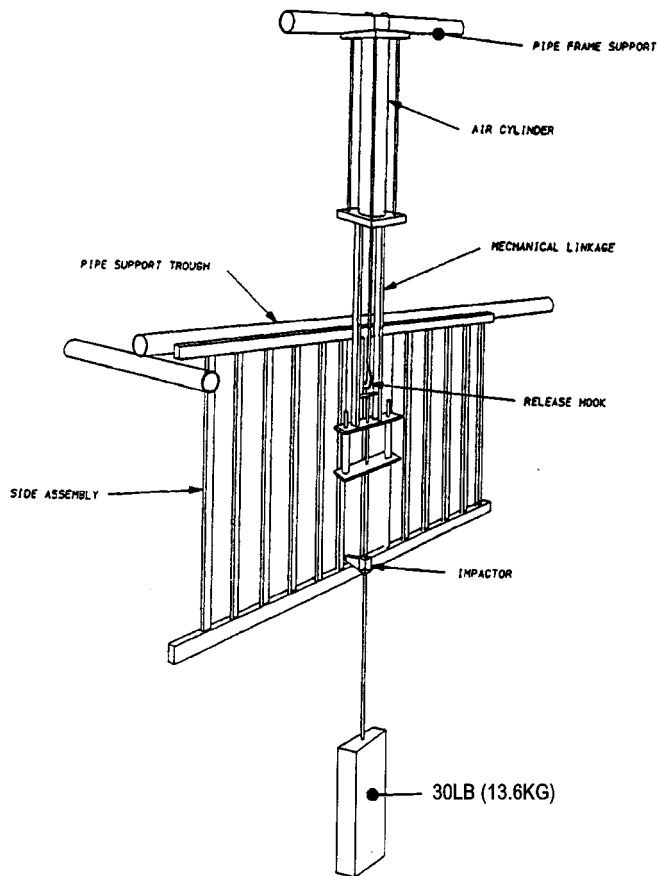


FIG. 4 Typical Side Assembly Test Fixture

67.42.3 Apparatus for Crib Side Static Test—(see Fig. 6):

6.4.1 A:

7.2.3.1 A 100-lb (45.4-kg) weight.

67.42.3.2 A rigid frame (see Fig. 7) for drop side only.

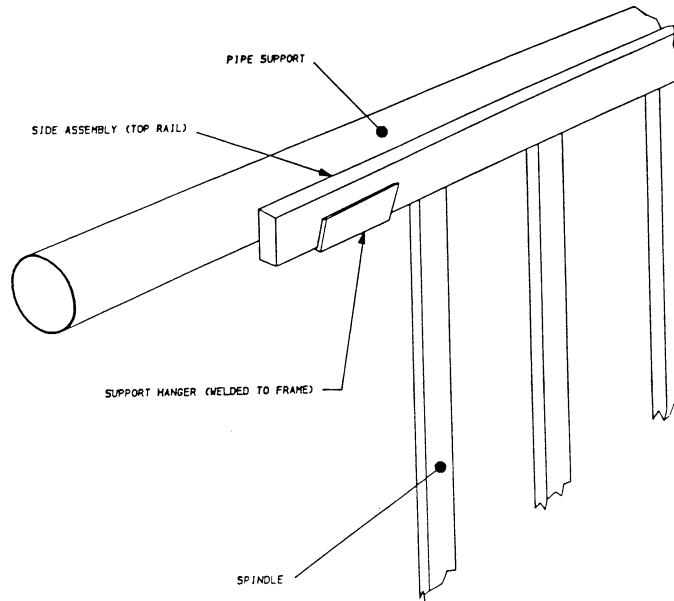


FIG. 4 5 Typical Support Trough

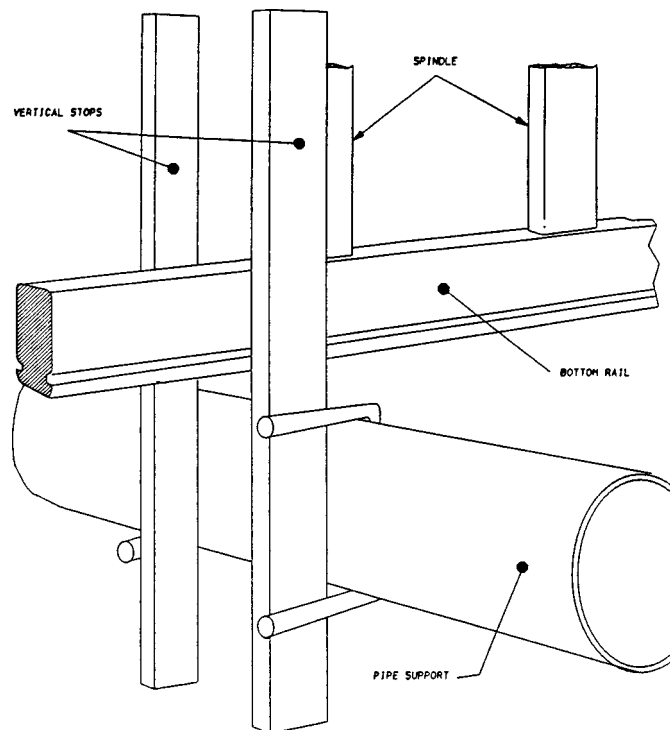


FIG. 5 6 Typical Side Test Vertical Stop Detail

6.5

7.2.4 Procedure for Crib Drop Side Testing Cyclic Test:

6.5.1 Dropside Cyclic Test:

6.5.1.1 Remove the side from the crib assembly.

6.5.1.2 The

7.2.4.2 Mount the side shall be mounted in a rigid test fixture so that it will hang vertically as it would when assembled to a crib.

6.5.1.3 The

7.2.4.3 Support the side shall be supported within 2 in. (50 mm) of each end of the top rail by placing the top rail in a trough-like support fixture (see Fig. 4):

6.5.1.4 To 5).

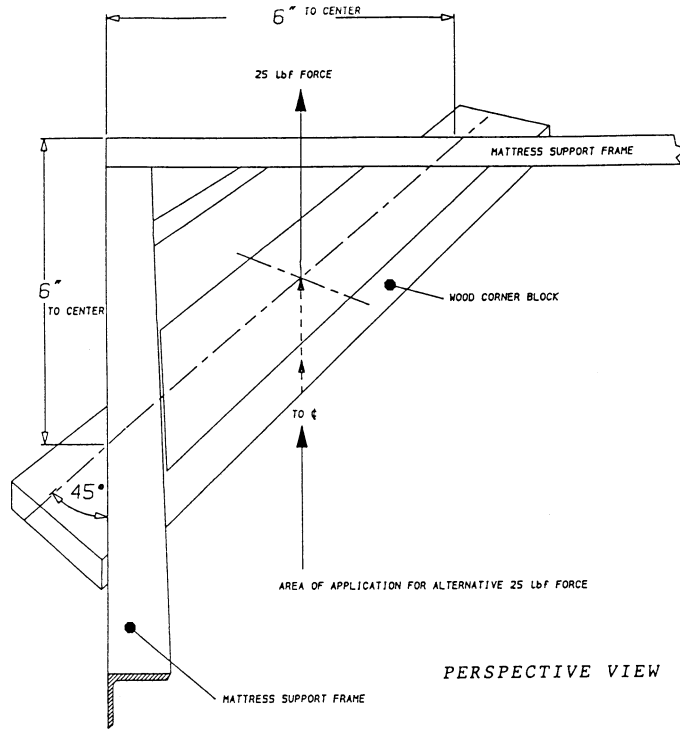


FIG. 6 8 Typical Mattress Support Detail

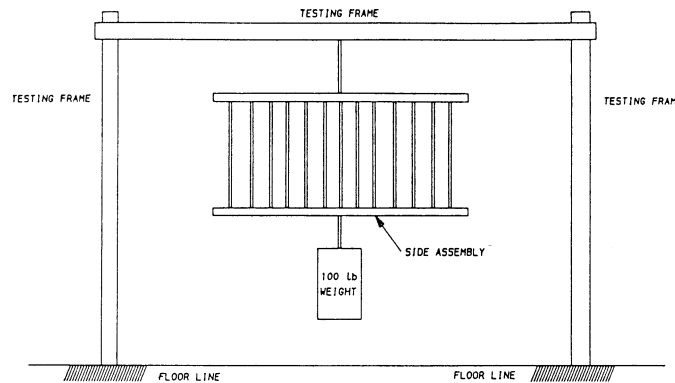


FIG. 7 Typical Testing Frame

7.2.4.4 To prevent “pendulum swing” of the side during testing, the side bottom rail may be loosely constrained between two vertical stops (see Fig. 5 6).

67.52.14.5 Allow the 30-lb (13.6-kg) weight to free-fall 3 in. (76 mm) 250 times at a rate of  $4 \pm 1$  s/cycle such that it impacts directly upon the 0.375-in. (9-mm) thick rubber pad located on the top surface of the bottom rail between two adjacent spindles or slats as near the center of the rail as possible.

6.6

7.2.5 Drop Side Static Test:

6

7.62.5.1 Upon completion of the cyclic test, apply a static load of 100 lb (45.4 kg) at the point of impact testing while the side is supported by the top rail at a point vertically in line with the point of load application (see Fig. 7).

67.62.5.2 The contact area for the load and reaction support shall be the same as the impact area previously defined.

67.62.5.3 Apply this load gradually within a period of 5 s and maintain it for an additional 30 s.

6.7

7.2.6 Stationary Side Cyclic Test :

6:7.2.6.1 Assemble the stationary side to the crib in accordance with manufacturer’s instructions.

6:7.2.6.2 Secure the bottom ends of the crib to eliminate horizontal motion at the base.

6:7.2.6.3 Allow the 30-lb (13.6-kg) weight to free-fall 3 in. (76 mm) 250 times at a rate of  $4 \pm 1$  s/cycle such that it impacts directly upon the 0.375-in. (9-mm) thick rubber pad located on the top surface of the bottom rail between two adjacent spindles



or slats as near the center of the rail as possible.

~~6.8–~~

~~7.2.7 Stationary Side Static Test :~~

~~67.82.7.1~~ The stationary side will remain mounted to the crib for this portion of the test.

~~67.82.7.2~~ Upon completion of the cyclic test, apply a weight of 100 lb (45.4 kg) at the point of impact testing while the side is supported on the top rail at a point vertically in line with the point of weight application (see Fig. 7) for location of weight only.

~~67.82.7.3~~ The contact area for the load and reaction support shall be the same as the impact area previously defined.

~~67.82.7.4~~ Apply the weight gradually within a period of 5 s and maintain it for an additional 30 s.

~~6.9–~~

~~7.2.8 Crib Side Spindle/Slat Torque Test:~~

~~67.92.8.1~~ Apply a torque of 30 lbf-in. (3.4 N-m) at the midpoint in height of each spindle or slat.

~~6.10 Crib Side Testing Requirements~~

~~7.3 Mattress Support System Test :~~

~~6.10.1~~ After completion of the cyclic and static portions of either the drop side or stationary side test as appropriate, the crib shall comply with 16 CFR Part 1508 and no spindles or slats shall have completely separated from the top or bottom rail. Complete separation shall be determined by placing a right triangular prism shaped wedge (see Fig. 1 in 16 CFR Part 1508) between two spindles or slats adjacent to the rail from which these have separated and applying a 20-lbf (90-N) pull force to the wedge in a direction normal to the plane of the crib side. If a spindle or slat moves away from the hole in the rail in which it was formerly secured, complete separation has occurred.

~~6.10.2~~ Components attached by screws shall not have separated by more than 0.04 in. (1 mm) upon completion of testing.

~~6.10.3~~ Any spindles or slats that could be rotated during the torque test shall comply with the spacing of crib components at 16 CFR Section 1508.4 when turned to their most adverse position.

~~6.10.4~~ Breakage of a wooden crib side component in any location other than a joint during testing does not constitute a failure. However, if this type of breakage should occur, an additional side must be tested.

~~NOTE 2—A wood failure within a joint does constitute a test failure.~~

**~~7. Mattress Support System Test~~**

~~7.1–~~

~~7.3.1 General—~~Apply a vertically upward force to the mattress support to evaluate its attachment to the crib.

~~7.2 Significance and Use—This—~~This test assists in evaluating the integrity of the attachment of the mattress support to the crib. A vertically upward force is applied to the mattress support to evaluate its attachment to the crib.

~~7.3.2 Apparatus for Mattress Support System Test:~~

~~7.3.2.1~~ Corner Block—(, see Fig. 6):

~~7.4– 8.~~

~~7.3.3 Procedure for Mattress Support System Test:~~

~~7.4.1~~ Upward motion of

~~7.3.3.1~~ Secure the crib will not be permitted to prevent upward motion during this test.

~~7.4.3.3.2~~ All procedures will be conducted with no mattress in the crib.

~~7.4.3.3.3~~ If the mattress support system utilizes a common support design at all points of attachment, testing is required in only one corner. If more than one support design is used, each point of attachment utilizing a different design must be tested.

~~7.4.3.3.4~~ Apply the force with the mattress support in each of the adjustment positions.

~~7.4.3.3.5~~ Apply the 25-lbf (111-N) force to the mattress support through a diagonally positioned test member such that the centerline of this test member contacts the underside of the mattress support at points 6 in. (1520 mm) from the corner of the support (6 in. (1520 mm) from the projected corner for a mattress support not having a square corner). (See Fig. 7) 8.)

~~7.4.3.3.6~~ Apply the 25-lbf (111-N) force gradually within a period of 5 s and maintain it for an additional 10 s before releasing the force.

~~7.5 Mattress Support System~~

~~7.4 Crib Side Latch Test Requirement:~~

~~7.5.1~~ Test failure occurs if the mattress support system becomes detached from the crib at any point of attachment, or if the force in 7.4.6 cannot be maintained for 10 s.

**~~8. Test Method for Crib Side Latch~~**

~~8.1–~~

~~7.4.1 General—~~This test consists of horizontally loading the crib assembly while a prescribed force is applied to the crib side.

~~8.2 Significance and Use—~~This test assists in evaluating the integrity of the crib side latching system under abusive load conditions. The test applies a force to a movable crib side in a direction tending to cause latch failure while a horizontal force is applied parallel to the major axis of the crib.

~~8.3.4.2 Apparatus for Crib Side Latch Test:~~

~~8.3.1~~ Hardwood Block;



7.4.2.1 Hardwood block with a contact area of 2 by 2 in. (50 by 50 mm) for transmission distribution of applied loads.

87.4.3 Procedure for Crib Side Latch Tests:

87.4.3.1 Casters shall not be installed on crib. Secure the bottom of the crib in a manner that will prevent horizontal motion.

~~8.4.2~~

7.4.4 Drop Side Latch Test:

8

7.4.24.1 Gradually apply within 5 s a vertically downward force of 60-lbf (270-N) through a hardwood block with a 2 by 2 in. (50 by 50 mm) contact area to the upper horizontal rail of the crib side at a point that is 6 in. (152 mm) from one end of the rail. While the 60-lbf (270-N) downward force is applied to the crib side, gradually apply within 5 s a 30-lbf (133-N) horizontal force in a direction parallel to the drop side. The point of application of this force shall be in the plane of the drop side and 1 in. (25 mm) down from the top of the crib corner post (or crib end panel for construction not incorporating crib corner posts—(see Fig. 8 9). Maintain this horizontal force for 30 s then reverse its direction and maintain it for an additional 30 s.

87.4.24.2 Repeat this procedure at the other end of the crib drop side and, if the crib has more than one drop side, perform the test at each end of each drop side.

87.4.24.3 Upon completion of the test, release the drop side latch and lower the crib side. Then raise the side and observe whether the latch automatically engages in the manner intended by the manufacturer.

~~8.4.3~~

7.4.5 Folding Side Latch Test:

8

7.4.35.1 Place the folding side in the latched position. Through a hardwood block with contact area of 2 by 2 in. (50 by 50 mm), gradually apply within 5 s a force of 30 lbf (133-N) horizontally outward, perpendicular to, and at a point that is 6 in. (152 mm) from one end of the folding side upper rail. While this 30-lbf (133-N) force is applied to the crib side, gradually apply within 5 s a 30-lbf (133-N) horizontal force in a direction parallel to the folding side. The point of application of this force shall be in the plane of the folding side and 1 in. (25 mm) down from the top of the crib corner post (or crib end panel for construction not incorporating crib corner posts (see Fig. 8 9)). Maintain this horizontal force for 30 s then reverse its direction and maintain it for an additional 30 s.

87.4.35.2 Place the folding side in the latched position. Through a hardwood block with contact area of 2 by 2 in. (50 by 50 mm), gradually apply within 5 s a force of 30 lbf (133-N) horizontally inward, perpendicular to, and at a point that is 6 in. (152 mm) from one end of the folding side upper rail. While this 30-lbf (133-N) force is applied to the crib side, gradually apply within 5 s a 30-lbf (133-N) horizontal force in a direction parallel to the folding side. The point of application of this force shall be in

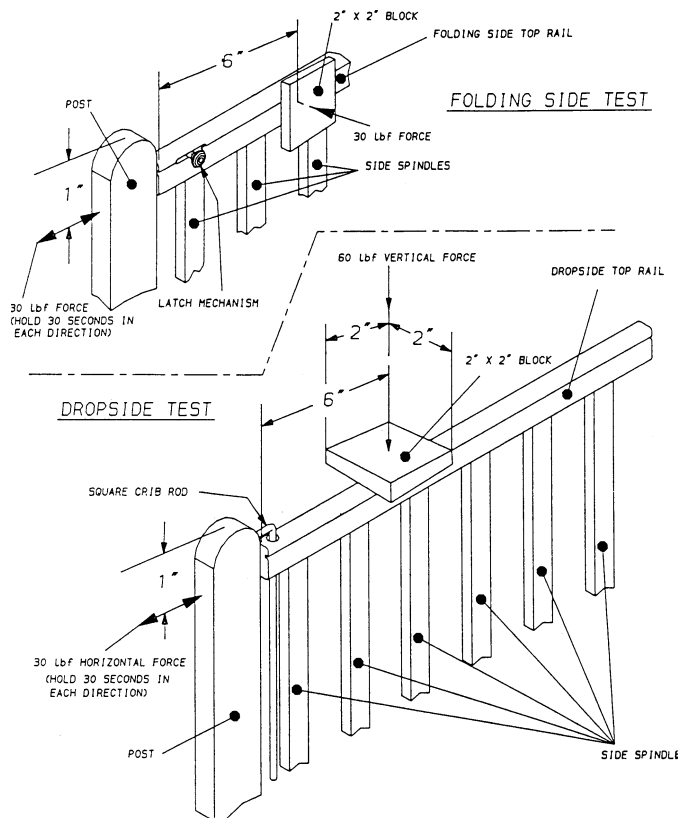


FIG. 8 9 Crib Side Latch Test

the plane of the folding side and 1 in. (25 mm) down from the top of the crib corner post (or crib end panel for construction not incorporating crib corner posts—see Fig. 8): 9). Maintain this horizontal force for 30 s then reverse its direction and maintain it for an additional 30 s.

87.4.35.3 Repeat the procedures defined in 8.4.3.1 7.4.5.1 and 8.4.3.2 7.4.5.2 at the other end of the folding side. If the crib has more than one folding side, perform this test at each end of each folding side.

87.4.35.4 Upon completion of the test, release the folding side latches and lower the crib side. Then raise the side and observe whether the latches automatically engage in the manner intended by the manufacturer.

~~8.5 Crib Side Latch~~

~~7.5 Plastic Teething Rail Test Requirements :~~

~~8.5.1 The latching mechanism securing a drop or folding side of a crib shall automatically engage when the side is placed in the normal use position.~~

~~8.5.2 The latching mechanism shall not disengage during testing and shall continue to function in the intended manner upon completion of the tests in either 8.4.2 or 8.4.3 as appropriate.~~

**9. Plastic Teething Rail Test**

~~9.1~~

~~7.5.1 General—This test consists of deforming the plastic teething rail under load to determine the security of the attachment.~~

~~97.5.2 Apparatus for Plastic Teething Rail Test:~~

~~9~~

~~7.5.2.1 Feeler Gage, 0.040 by 1 in. (1.00 by 25 mm).~~

~~97.5.2.2 Hardwood Block, with 2 by 2 in. (50 by 50 mm) contact area.~~

~~97.5.2.3 Hardware, to apply 50 lbf (222- N) to block.~~

~~9.3 Calibration and Standardization—The teething rail is to be installed per normal manufacturing practice.~~

~~9.4~~

~~7.5.3 Procedure for Plastic Teething Rail Test:~~

~~9~~

~~7.45.3.1 Install the teething rail per normal manufacturing practice.~~

~~7.5.3.2 With the plastic teething rail assembled to crib top rail, apply a 50-lbf (222-N) vertically downward force to the top of the teething rail through the hardwood block at the center top of the teething rail. While maintaining this force is maintained, force, determine if the 0.040 in. (1.00 mm) feeler gage shall not fit can be inserted between the vertical surfaces of the top rail and the inside surface or edge of the plastic teething rail (see Fig. 9 10).~~

~~9.4.2 Repeat 9.4.1~~

~~7.5.3.3 Repeat 7.5.3.2 at center location wherever a plastic teething rail is located.~~

~~9.5 Plastic Teething Rail Test Requirement—Failure occurs when the feeler gage as defined in 9.2.1 can be introduced into the gap created by the deflection or deformation, or both, of the plastic teething rail resulting from the application of the 50 lbf (222-N) force.~~

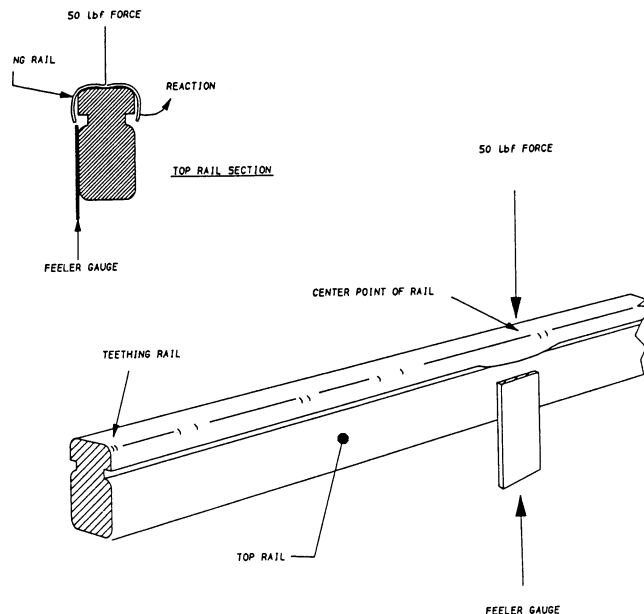


FIG. 9 10 Teething Rail Test

~~10.~~

## 8. Labeling

~~10.1 A warning statement~~

8.1 Each product shall be in contrasting color(s) and have warning statements, permanently affixed to either the headboard, footboard, or mattress support and support, shall be in contrasting color(s) and visible in its entirety when the crib mattress is removed.

~~10.1.1 In~~

8.1.1 The warning statements located as defined in 10.1, shall be prefixed by the letters of safety alert symbol “ $\triangle$ ” and the word “**WARNING**” shall be **WARNING** in boldface type not less than  $\frac{3}{16}$  in. (5 mm) high and the high. The remainder of the text shall be in letters not less than  $\frac{3}{32}$  in. (2.4 mm) high.

~~10.1.2 The warning statement for cribs statements shall read:~~

$\triangle$  **WARNING:** Failure to follow these warnings and the assembly instructions could result in serious injury or death.

\* Before each usage or assembly, inspect crib for damaged hardware, loose joints, missing parts or sharp edges. DO NOT use crib if any parts are missing or broken. Ask your dealer or write to (*insert manufacturer's name*) for replacement parts and instructional literature if needed. DO NOT substitute parts.

\*After raising side, make sure latches are secure.

\*When child is able to climb out or reaches the height of 35 in. (90 cm), the crib shall no longer be used.

\*DO NOT place crib near window where cords from blinds or drapes may strangle a child.

\*If refinishing, use a non-toxic finish specified for children's products.”

~~10.1.3 Cribs not intended to hold water mattresses must include the following statement in the list of warnings set out in 10.1.2:~~

\*“DO NOT use a water mattress with this crib.”

~~10.1.4 Cribs equipped with teething rails must include the following statement in the list of warnings set out in 10.1.2:~~

\*“Replace teething rail if damaged or loose.”

## 9. Instructional Literature

9.1 Instructions must be provided with the crib and shall be easy to read and understand. These instructions shall include information on assembly, maintenance, cleaning, storage and use. A means shall be provided to keep the instructions with the crib.

~~10.1.1 In~~

9.1.1 The instructional literature shall contain warning statements located in prefixed by the instructional literature, safety alert symbol “ $\triangle$ ” and the letters of the word “**WARNING**” shall be **WARNING** in boldface type not less than  $\frac{3}{16}$  in. (5 mm) and the high. The remainder of the text shall be in letters not less than  $\frac{3}{32}$  in. (2.4 mm) high.

9.1.2 The warning statement for cribs statements shall read:

“

$\triangle$  **WARNING:** Failure to follow these warnings and assembly instructions could result in serious injury or death.

\*Read all instructions before assembling crib. **KEEP INSTRUCTIONS FOR FUTURE USE.** (This is to be highlighted.)

\*Before each usage or assembly, inspect crib for damaged hardware, loose joints, missing parts or sharp edges. DO NOT use crib if any parts are missing or broken. Ask your dealer or write to (*insert manufacturer's name*) for replacement parts and instructional literature if needed. DO NOT substitute parts.

\*After raising side, make sure latches are secure.

\*When child is able to climb out or reaches the height of 35 in. (90 cm), the crib shall no longer be used.

\*DO NOT place crib near window where cords from blinds or drapes may strangle a child.

\*Strings can cause strangulation! Do not place items with a string around a child's neck, such as hood strings or pacifier cords.

Do not suspend strings over a crib or attach strings to toys.

\*If refinishing, use a non-toxic finish specified for children's products.

\*DO NOT leave child in crib with side lowered. Be sure side is in raised and locked position whenever child is in crib.

\*When child is able to pull to standing position, set mattress to lowest position and remove bumper pads, large toys and other objects that could serve as steps for climbing out.

\*Never use plastic shipping bags or other plastic film as mattress covers because they can cause suffocation.

~~10.1.3 Cribs not intended to hold water mattresses must include the following statement in the list of warnings set out in 10.1.2:~~

\*“DO NOT use a water mattress with this crib.”

~~10.1.4 Cribs equipped with teething rails must include the following statement in the list of warnings set out in 10.1.2:~~

\*“Replace teething rail if damaged or loose.”

## 10. Keywords

10.1 crib corner post entanglement; crib structural integrity; crib warning labels and instructional material

*ASTM International takes no position respecting the validity of any patent rights asserted in connection with any item mentioned in this standard. Users of this standard are expressly advised that determination of the validity of any such patent rights, and the risk of infringement of such rights, are entirely their own responsibility.*

*This standard is subject to revision at any time by the responsible technical committee and must be reviewed every five years and if not revised, either reapproved or withdrawn. Your comments are invited either for revision of this standard or for additional standards and should be addressed to ASTM International Headquarters. Your comments will receive careful consideration at a meeting of the responsible technical committee, which you may attend. If you feel that your comments have not received a fair hearing you should make your views known to the ASTM Committee on Standards, at the address shown below.*

*This standard is copyrighted by ASTM International, 100 Barr Harbor Drive, PO Box C700, West Conshohocken, PA 19428-2959, United States. Individual reprints (single or multiple copies) of this standard may be obtained by contacting ASTM at the above address or at 610-832-9585 (phone), 610-832-9555 (fax), or [service@astm.org](mailto:service@astm.org) (e-mail); or through the ASTM website ([www.astm.org](http://www.astm.org)).*