



Standard Specification for Helmets Used for Recreational Snow Sports¹

This standard is issued under the fixed designation F 2040; the number immediately following the designation indicates the year of original adoption or, in the case of revision, the year of last revision. A number in parentheses indicates the year of last reapproval. A superscript epsilon (ϵ) indicates an editorial change since the last revision or reapproval.

1. Scope

1.1 This specification defines performance requirements for helmets used in nonmotorized recreational snow sports (such as skiing, snowboarding, and other alpine sports). This specification is a performance standard and is not intended to restrict design. Although a helmet that meets this specification will help reduce the risk of some types of injuries to the head at slower speeds, the protection is limited. The user is responsible for participating in the sport within his/her abilities and the nature of the snow conditions which may vary widely. Compliance with the common sense rules of the sport's safety, including any applicable responsibility codes, is essential to help reduce the risk of personal injury.

1.2 All testing and requirements of this specification shall be in accordance with Test Methods F 1446, except where noted herein.

1.3 Partial utilization of this specification is prohibited. Any statement of compliance with this specification shall be a certification that the product meets all of the requirements of the specification in its entirety. A product that fails to meet any one of the requirements of this specification is considered to have failed the standard and should not be sold with any indication that it meets parts of the standard.

2. Referenced Documents

2.1 ASTM Standards:

¹ This specification is under the jurisdiction of ASTM Committee F08 on Sports Equipment and Facilities and is the direct responsibility of Subcommittee F08.53 on Headgear and Helmets.

Current edition approved ~~June~~ Nov. 10, 2000². Published ~~S~~ December 2002. Originally published as F 2040 – 00. Last previous edition F 2040 – 00.

F 1446 Test Methods for Equipment and Procedures Used in Evaluating the Performance Characteristics of Protective Headgear²

3. Headforms

3.1 Headforms to be used in this specification are as specified in Section 6 of Test Methods F 1446. The appropriate size headform shall be selected (see 3.1.7 of Test Methods F 1446) for the helmet to be tested.

4. Marking the Test Line

4.1 The test line is shown in Fig. 1 and shall be marked in accordance with Test Methods F 1446.

5. Conditioning and Number of Samples

5.1 Four sample helmets are required for each shell/liner size combination.

5.2 Conditioning of the samples to be tested is described in Sections 11 and 12 of Test Methods F 1446, but differs as follows:

5.2.1 *Low Temperature*—The low temperature shall be -22 to -28°C.

5.2.2 *High Temperature*—The high temperature shall be 32 to 38°C.

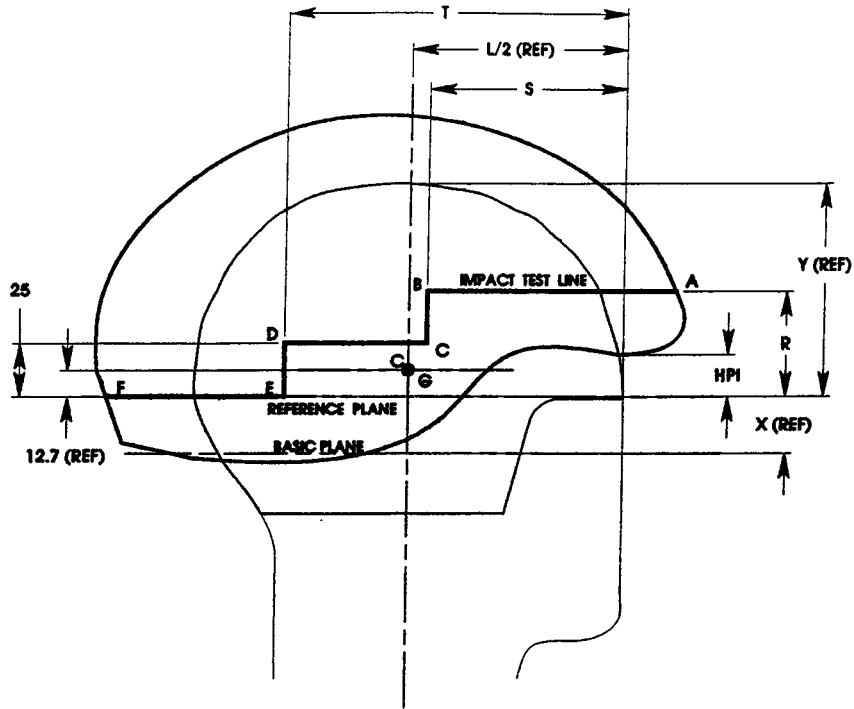
6. Retention System Testing

6.1 The Dynamic Strength Retention Test shall be completed in accordance with Test Methods F 1446 prior to impact testing.

6.2 *Dynamic Strength Retention Test*— The hot, cold, and wet helmets shall be subjected to the Dynamic Strength Retention Test. Place the helmet on the appropriate size headform on the test device described in Section 15 and Fig. 5 of Test Methods F 1446.

6.2.1 Place the twin bar (jaw) system with rod and drop weight attached within the fastened retention system.

² Annual Book of ASTM Standards, Vol 15.07.



HEADFORM SIZE	DIMENSION					
	X	L/2	Y	R	S	T
A	24.0	88.0	89.7	47	84	142
E	26.0	94.5	96.0	49	88	151
J	27.5	101.0	102.5	50	92	160
M	29.0	106.0	107.0	52	96	166
O	30.0	108.5	110.0	53	97	170

FIG. 1 Marking the Test Line

6.2.2 Mark the position of the twin bar with preload and drop weights in position.

6.2.3 Drop a 4-kg sliding weight a distance of 0.6 m.

6.2.4 The retention system shall remain intact without elongating more than 30 mm.

6.3 The ambient helmet shall be subjected to the positional stability (roll-off) test in accordance with Test Methods F 1446 using a 4 kg drop mass from a height of 0.6 m.

6.3.1 The retention system shall remain intact and the helmet shall remain on the headform.

7. Anvils and Impact Velocities

7.1 Anvils to be used for impact tests in this specification are described as follows:

7.1.1 *Flat Anvil*, as described in 16.4.1 of Test Methods F 1446.

7.1.2 *Hemispherical Anvil*, as described in 16.4.2 of Test Methods F 1446.

7.1.3 *Edge Anvil*, constructed of solid steel in accordance with Fig. 2.

7.2 *Impact Velocities*:

7.2.1 Impacts upon the flat anvil shall achieve a velocity of 6.2 m/s (corresponding to a theoretical drop height of 2.0 m).

7.2.2 Impacts upon the hemispherical anvil shall achieve a velocity of 4.8 m/s (corresponding to a theoretical drop height of 1.2 m).

7.2.3 Impacts upon the edge anvil shall achieve a velocity of 4.5 m/s (corresponding to a theoretical drop height of 1.0 m).

7.2.4 The impact velocity shall be measured during the last 40 mm of free-fall for each test and shall be within 3 % of the velocities specified in 7.2.1, 7.2.2, and 7.2.3.

8. Impact Sites

8.1 Centers of impact can be located anywhere on or above the test line with the anvils aligned in any orientation.

8.2 The theoretical center³ of each impact site shall be separated from the theoretical center of other impact sites by a minimum of 120 mm.

9. Impacting Schedule

9.1 All impacting shall be performed in accordance with 18.2 of Test Methods F 1446.

9.2 Two of the four impact sites (as described in 16.2 of Test Methods F 1446) will use the flat anvil.

³ The theoretical center of impact is the point of intersection of the Z-axis and the outer surface or projected surface of the helmet at $x = 0, y = 0$ (see X1.1 of Test Methods F 1446).

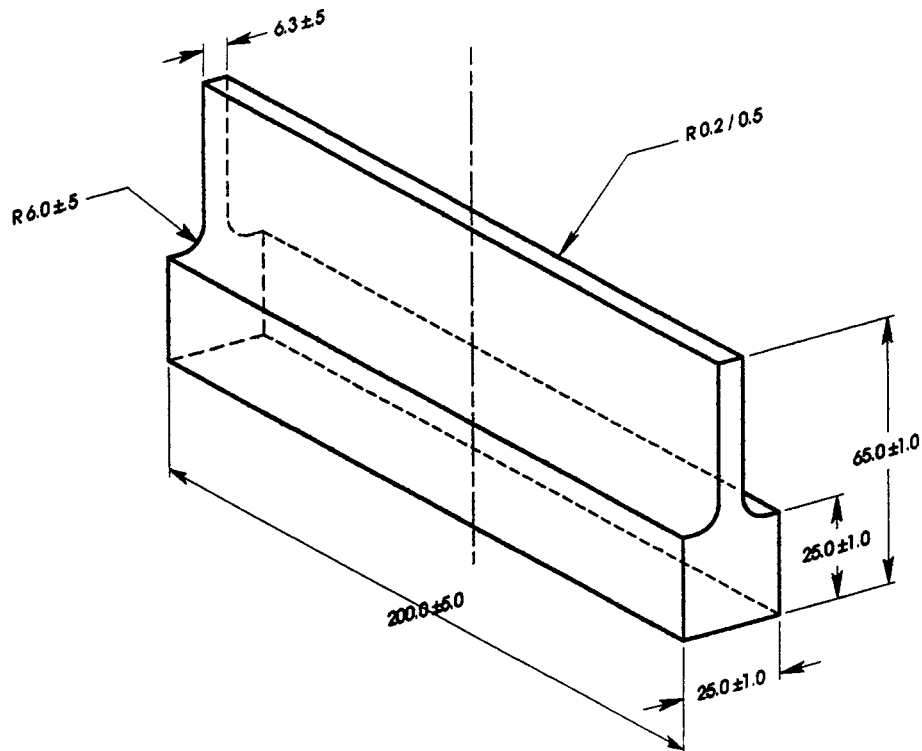


FIG. 2 Edge Anvil

- 9.3 One impact site will use the hemispherical anvil.
- 9.4 One impact site will use the edge anvil.
- 9.5 The impact sites and anvils can be selected in any sequence.

10. Peak Acceleration Requirements

10.1 The peak acceleration (g max) of the impulse during the impact shall be measured with equipment described in Section 16 of Test Methods F 1446.

10.2 The peak acceleration of any impact shall not exceed 300 g .

11. Labels and Warnings

11.1 In addition to the labeling requirements of Test Methods F 1446, the helmet shall have the words “for use in nonmotorized recreational snow sports (such as skiing, snowboarding, and other alpine sports)” inscribed on one of the interior permanent labels.

12. Keywords

12.1 helmet; protective headgear; skiing; snowboarding

ASTM International takes no position respecting the validity of any patent rights asserted in connection with any item mentioned in this standard. Users of this standard are expressly advised that determination of the validity of any such patent rights, and the risk of infringement of such rights, are entirely their own responsibility.

This standard is subject to revision at any time by the responsible technical committee and must be reviewed every five years and if not revised, either reapproved or withdrawn. Your comments are invited either for revision of this standard or for additional standards and should be addressed to ASTM International Headquarters. Your comments will receive careful consideration at a meeting of the responsible technical committee, which you may attend. If you feel that your comments have not received a fair hearing you should make your views known to the ASTM Committee on Standards, at the address shown below.

This standard is copyrighted by ASTM International, 100 Barr Harbor Drive, PO Box C700, West Conshohocken, PA 19428-2959, United States. Individual reprints (single or multiple copies) of this standard may be obtained by contacting ASTM at the above address or at 610-832-9585 (phone), 610-832-9555 (fax), or service@astm.org (e-mail); or through the ASTM website (www.astm.org).