



N O T E

This leaflet forms part of a series which also includes :

Leaflet 510-1 : Wagon running gear - Normalisation

Leaflet 510-2 : Trailing stock - Conditions concerning the use of wheels of various diameters with running gear of different types

Leaflet 810-1 : Rough rolled non-alloy steel tyres for tractive and trailing stock

SUMMARY

1 - OBJECT AND AREA OF APPLICATION

2 - REQUIRED CHARACTERISTICS

2.1 - Machining allowances; tolerances of dimensions, shape and position

2.2 - Mass

3 - CHECKING

1 - OBJECT AND AREA OF APPLICATION

This technical specification governs the supply of rough rolled non-alloy steel tyres for tractive and trailing stock as described in UIC Leaflet 810-1.

"Rough tyres" are understood to be unmachined rough rolled tyres. The alterations permitted by UIC Leaflet 810-1, section 6.6.1, may be carried out.

2 - REQUIRED CHARACTERISTICS

2.1 - Machining allowances; tolerances of dimensions, shape and position

Apply the :

- a) machining allowances
- b) tolerances of dimensions, shape and position shown in the table.


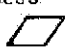
2.2 - Weight

The permissible weight tolerance may reach + 6% of the nominal weight of the tyre.  
0

3 - CHECKING

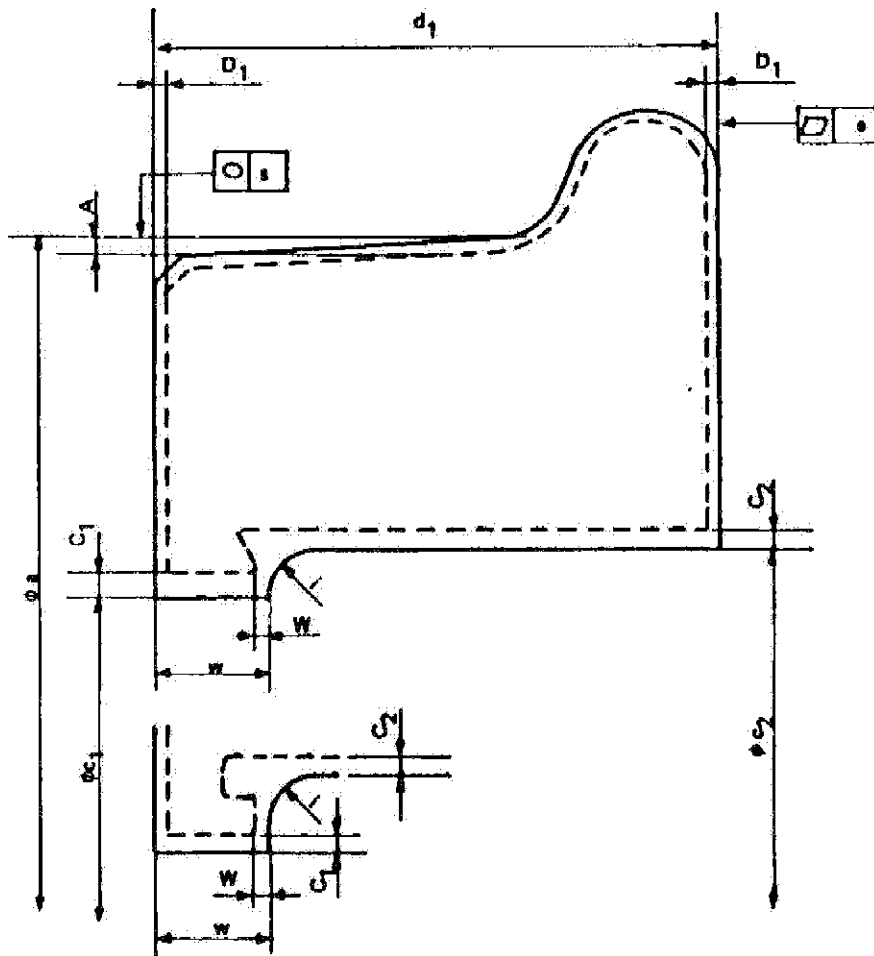
Conformity with all the tolerances indicated in this Leaflet should be checked by the manufacturer (see Table 2, UIC Leaflet 810-1).

MACHINING ALLOWANCES, TOLERANCES OF DIMENSIONS, SHAPE AND POSITION FOR "ROUGH" TYRES

Description	Tolerance symbol (see Fig. 1) dimensions shape and position		Machining allowances	Tolerances	Checking
			(1) mm	(2) mm	(3)
External diameter	A		2.5		
	a			+8 0	m
Internal diameter	C <sub>2</sub>		3		
	c <sub>2</sub>			0 - 10	m
Width	D <sub>1</sub>		1.5		
	d <sub>1</sub>			+3 0	m
Internal diameter	C <sub>1</sub>		3		
	c <sub>1</sub>			0 - 10	m
Tyre lip Width	W		3		
	w			+3 0	m
Radius	r		not exceeding the depth of the stop flange	$\left[ \frac{dc_2 - dc_1}{2} \right]$	m
Roundness 		s		2.5	m
Flatness 		e		2	m

- 1) Railways may, also for economic reasons, select higher values for the machining allowances.
- 2) The permissible weight tolerances (see Section 2.2) should be adhered to.
- 3) m = mandatory.

FIGURE 1



APPLICATION

As from 1st January 1985

All Railways in the Union.

RECORD REFERENCES

This Leaflet, codified in 1953 under No. 516, bears, as from 1st January 1955, the new number 810-2.

Headings under which the question has been dealt with :

- Determination of the quality of steel used for the manufacture of rails and tyres, particularly from the point of view of resistance, hardness, brittleness and wear, having regard to the relation between the rail and the wheel when in contact.

(5th Committee - R.S. - P.W., Lausanne, June 1952 - Board of Management, November 1952).

- Possible revision of Leaflet No. 810-2 "Rough tyres for trailing stock - Dimensions and tolerances", with reference to the width of tyres.

(5th Committee - R.S., Budapest, June 1958).

- Application of specifications : preparation of a report on the application of specifications by UIC Administrations.

(5th Committee - J.Q., Paris, May 1961).

- Examination of specifications for axles, wheels and tyres in conjunction with industrial representatives.

(5th Committee - J.Q., Portsmouth, May 1962).

- Question 5/Sa/FIC : Revision of Leaflet No. 810-2. (Traction and Rolling Stock Committee, Paris, June 1984).