

N O T E

This leaflet forms part of a set which includes :

- Leaflet 570 : Wagons - Interchangeable parts.
- Leaflet 573 : Technical conditions for the construction of tank wagons

C O N T E N T S

- 0 - GENERAL
- 1 - AIR PIPE CONNECTIONS
- 2 - CONNECTIONS FOR PIPES USED FOR POWDERED SUBSTANCES
- Plate 1 - STANDARD CONNECTION FOR AIR PIPES OF WAGONS WITH PNEUMATIC DISCHARGE
- Plate 2 - STANDARD CONNECTION FOR PIPES USED FOR POWDERED SUBSTANCES ON WAGONS WITH PNEUMATIC DISCHARGE
- Plate 3 - MODEL SHUT-OFF VALVE FOR PIPES USED FOR POWDERED SUBSTANCES FITTED WITH STANDARD CONNECTIONS

0 - GENERAL

* 0-1 - The obligatory provisions contained in this leaflet shall be applicable for wagons to be built, with effect from 1 January 1965.

0-2 - It is recommended that the scope of these same provisions be extended to cover existing wagons.

1 - AIR PIPE CONNECTIONS

* 1-1 - Air pipes for wagons equipped for pneumatic discharge shall be provided with 50 mm connections conforming to the standard design given in Plate 1.

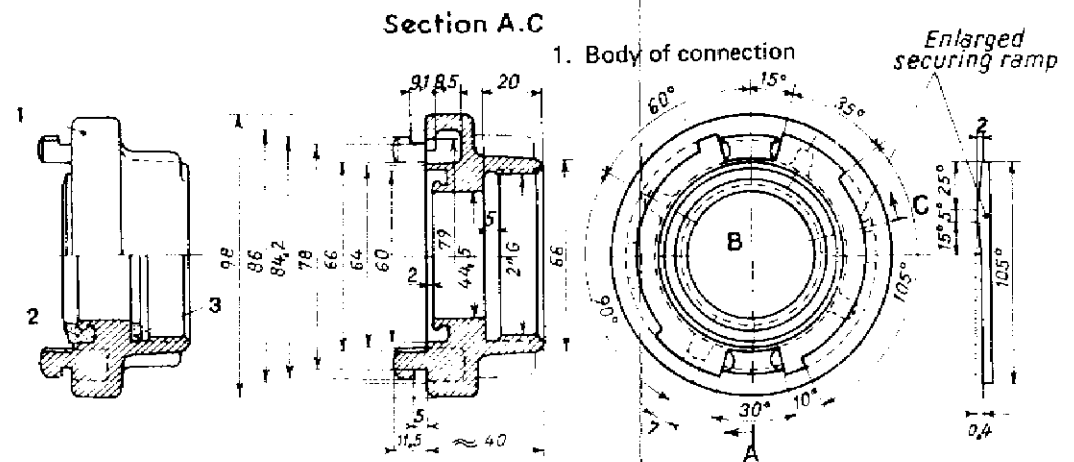
2 - CONNECTIONS FOR PIPES USED FOR POWDERED SUBSTANCES

* 2-1 - Pipes for powdered substances shall be provided with 100 mm connections conforming to the standard design given in Plate 2.

2-2 - Plate 3 reproduces, for information purposes, the drawing of a shut-off valve for pipes for powdered substances fitted with standard connections.

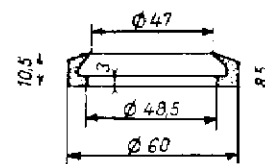
PIPE CONNECTIONS FOR WAGONS EQUIPPED FOR
PNEUMATIC DISCHARGE

STANDARD CONNECTION FOR AIR PIPES OF WAGONS
WITH PNEUMATIC DISCHARGE

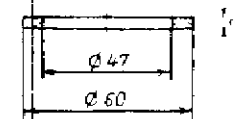


The area of maximum thickness of the securing ramp is contained within Section B C

2. Airtight joint
(rubber 70 80 IRH)

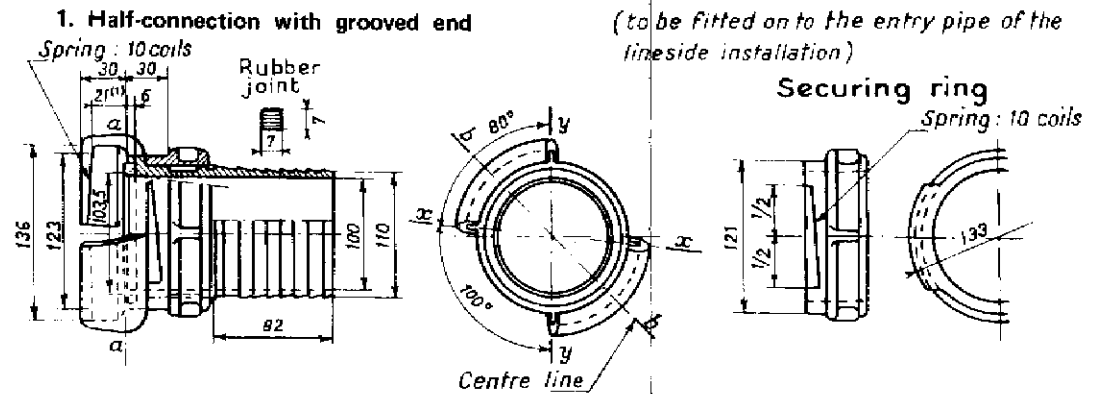


3. Flat airtight joint
(leather or rubber)

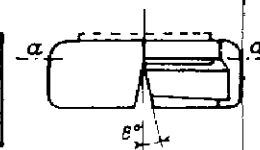


PIPE CONNECTIONS FOR WAGONS EQUIPPED FOR PNEUMATIC DISCHARGE

STANDARD CONNECTION FOR PIPES USED FOR POWDERED SUBSTANCES ON WAGONS WITH PNEUMATIC DISCHARGE

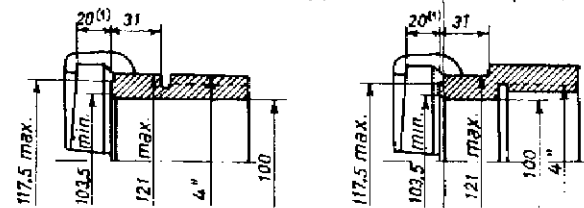


(1) This measurement is understood as being measured along the centre-line b-b of each half-sleeve.



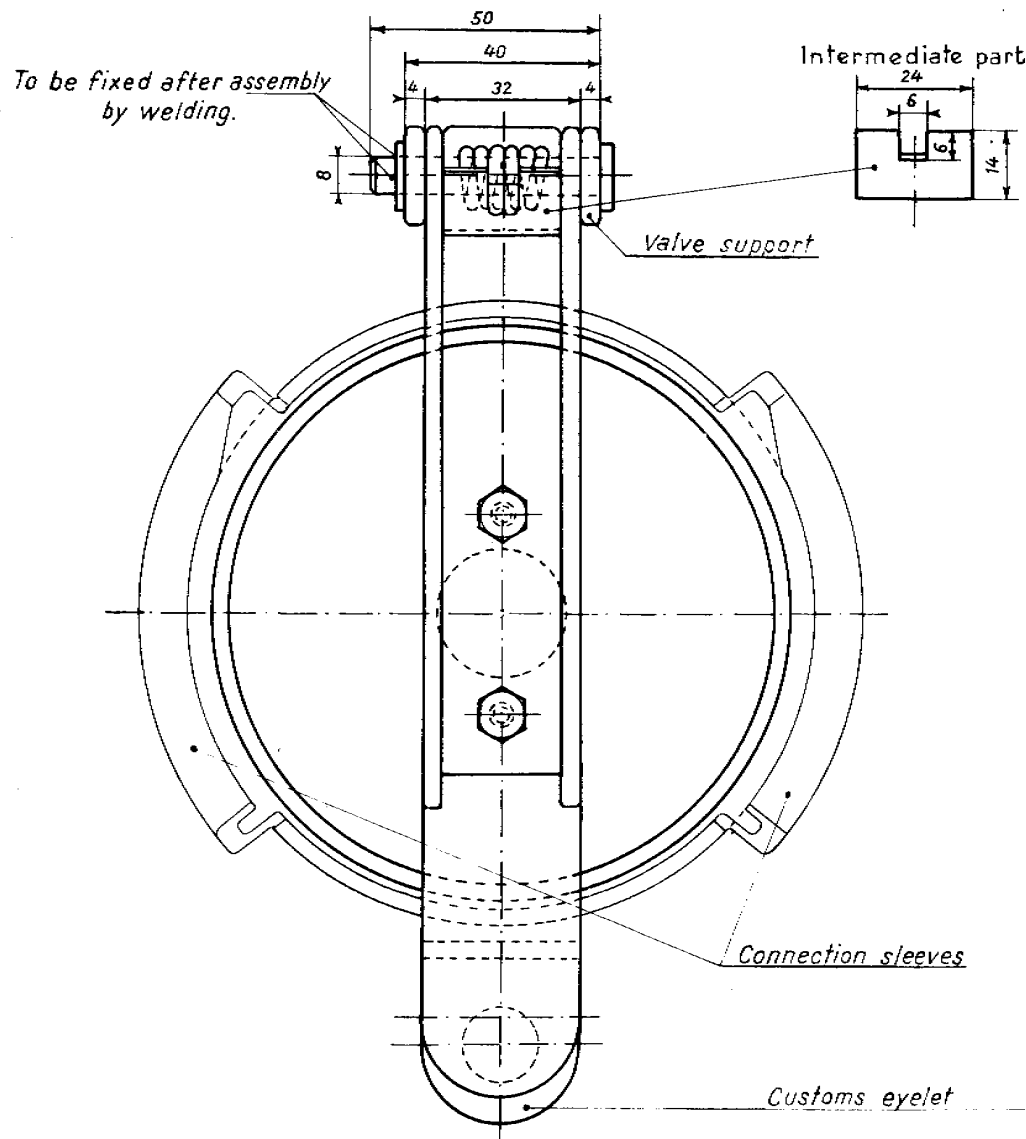
The end sections of each half-sleeve sloping at an angle of 8° to the centre line, pass through the straight lines $\alpha-\alpha$ and $y-y$ of the section $\alpha-\alpha$, forming an angle of 80° between them.

2. Half-connection with threaded or tapped end (for placing on the wagon pipe)

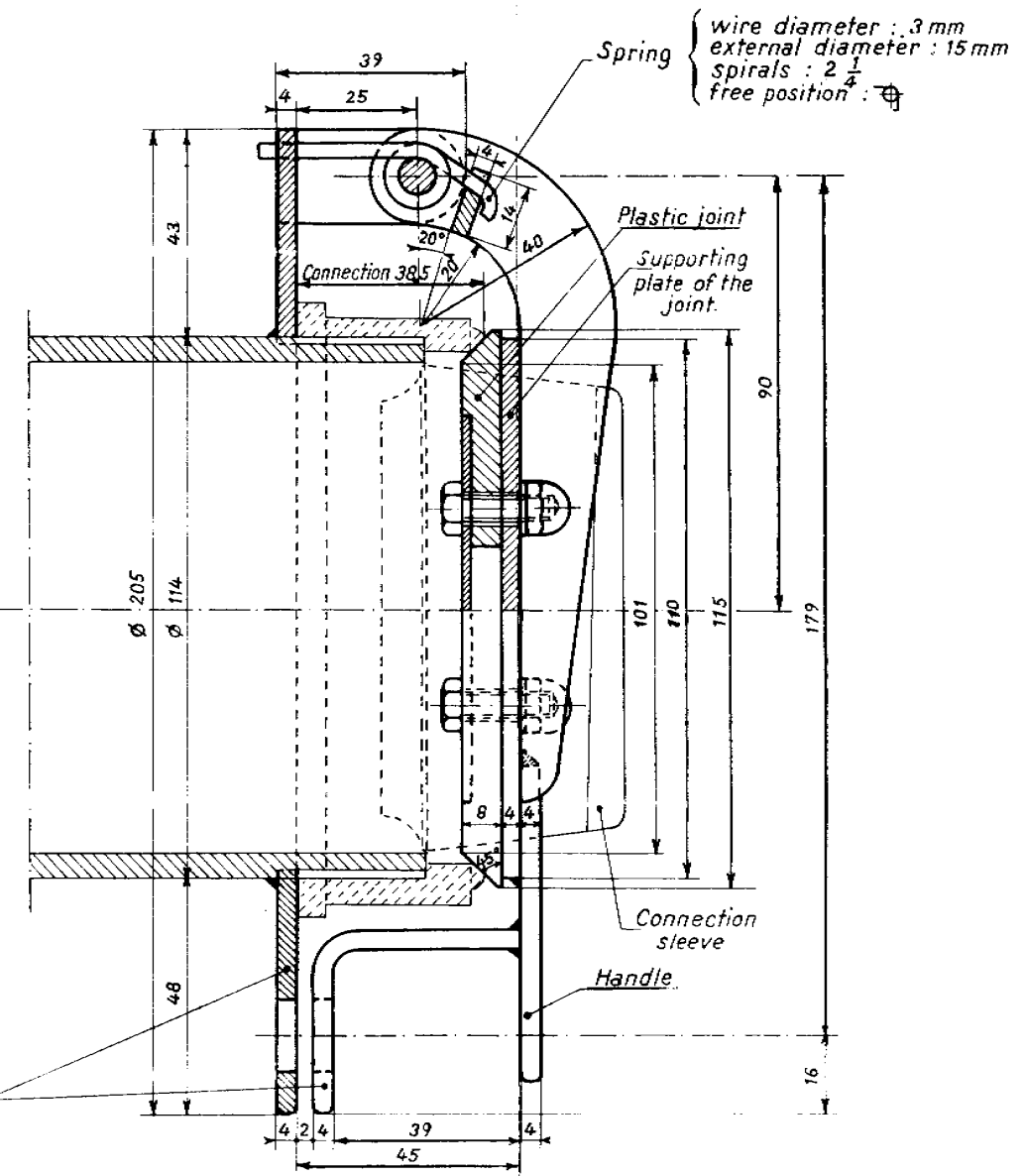


In the half-connection on the wagon, the rubber joint is replaced by a metal projection (flange). The thread or tapping at the end of the half-connection is in accordance with Whitworth thread measurements with a gas-thread 4" in diameter.

PIPE CONNECTIONS FOR WAGONS EQUIPPED FOR PNEUMATIC DISCHARGE
 MODEL SHUT-OFF VALVE FOR PIPES USED FOR POWDERED SUBSTANCES
 FITTED WITH STANDARD CONNECTIONS



Front view



Side view

Connection sleeves

Customs eyelet

APPLICATION

With effect from 1 January 1965 for obligatory provisions.
All Railways in the Union.

RECORD REFERENCES

Headings under which the question has been dealt with :

- Study concerning the possibility of standardising connections for air pipes and those for pipes used for powdered substances on wagons with pneumatic discharge.
(5th Committee - C. & W. -, Paris, May 1963).
- Examination of the possibility of standardising connections for pipes used for powdered substances on wagons with pneumatic discharge.
(5th Committee - C. & W. -, Berne, May 1964).
- Updating of UIC Leaflet 537 "Pipe connections for wagons equipped for pneumatic discharge".
(Joint Sub-Committee for Wagons, Paris, January 1986).