

N O T E

This leaflet is part of a set which also includes :

- Leaflet 533 : Protection by the earthing of metal parts of vehicles

- Leaflet 554-1 : Power supply to electrical equipment on stationary railway vehicles from a local mains system at 220 v or 380 V, 50 Hz.

I N D E X

0 - GENERAL

1 - PROTECTION MEASURES

2 - ELECTRIC INSTALLATION

Plate 1 - INSTALLATION LAY-OUT ON MECHANICALLY-REFRIGERATED WAGONS

Plate 2 - POWER SUPPLY TO MECHANICALLY-REFRIGERATED WAGONS FORMING A RAFT WITH A COMMON POWER SUPPLY AT 380 v, 50 Hz.

* 0 - GENERAL

The regulations in this leaflet shall apply to mechanically-refrigerated wagons, fitted with a three-phase current supply line at 380 V, 50 Hz and able to run in rafts and to be supplied with a common source of energy.

1 - PROTECTION MEASURES

1.1- Please refer to Leaflet 554-1, points 2.1, 2.2 and 3.1.

* 1.2- There must be no possibility of mutual interaction between the various power supply sources.

2 - ELECTRIC INSTALLATION

* 2.1- The electric installation of mechanically-refrigerated wagons must be in accordance with the diagram shown in Plate 1.

* 2.2- The electric connection between the mechanically-refrigerated wagons and the supply van must be made in accordance with one of the two electric diagrams shown in Plate 2.

* 2.3- It is necessary to use the 240 A coupling devices specified for the OSJD mechanically-refrigerated vehicles (1) for the electric connection between wagons.

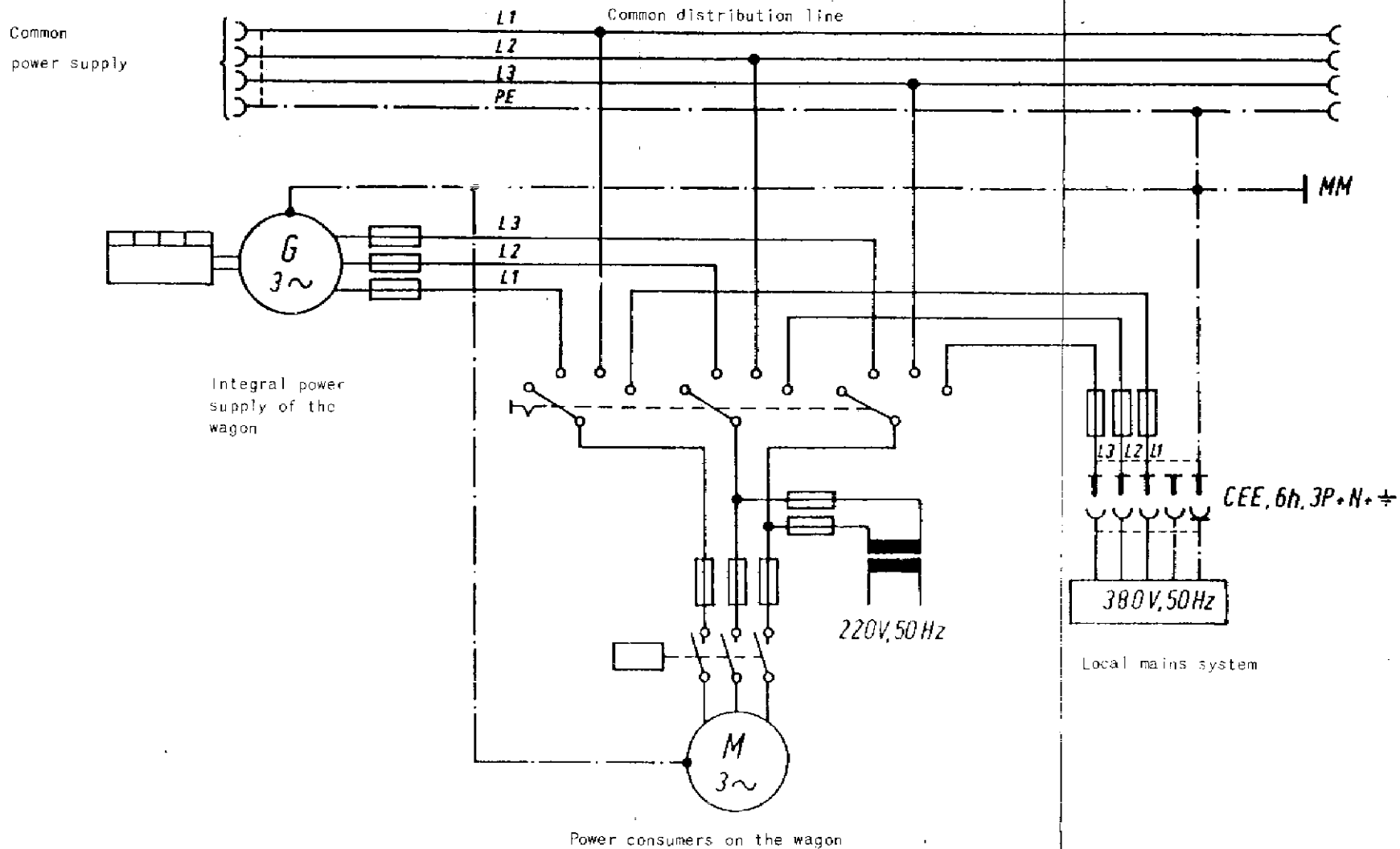
2.4- Coupling devices with pilot contact are recommended.

2.5- The protective conductor of the three-phase current supply line may have a nominal cross-section two sizes smaller than that of the phase conductor.

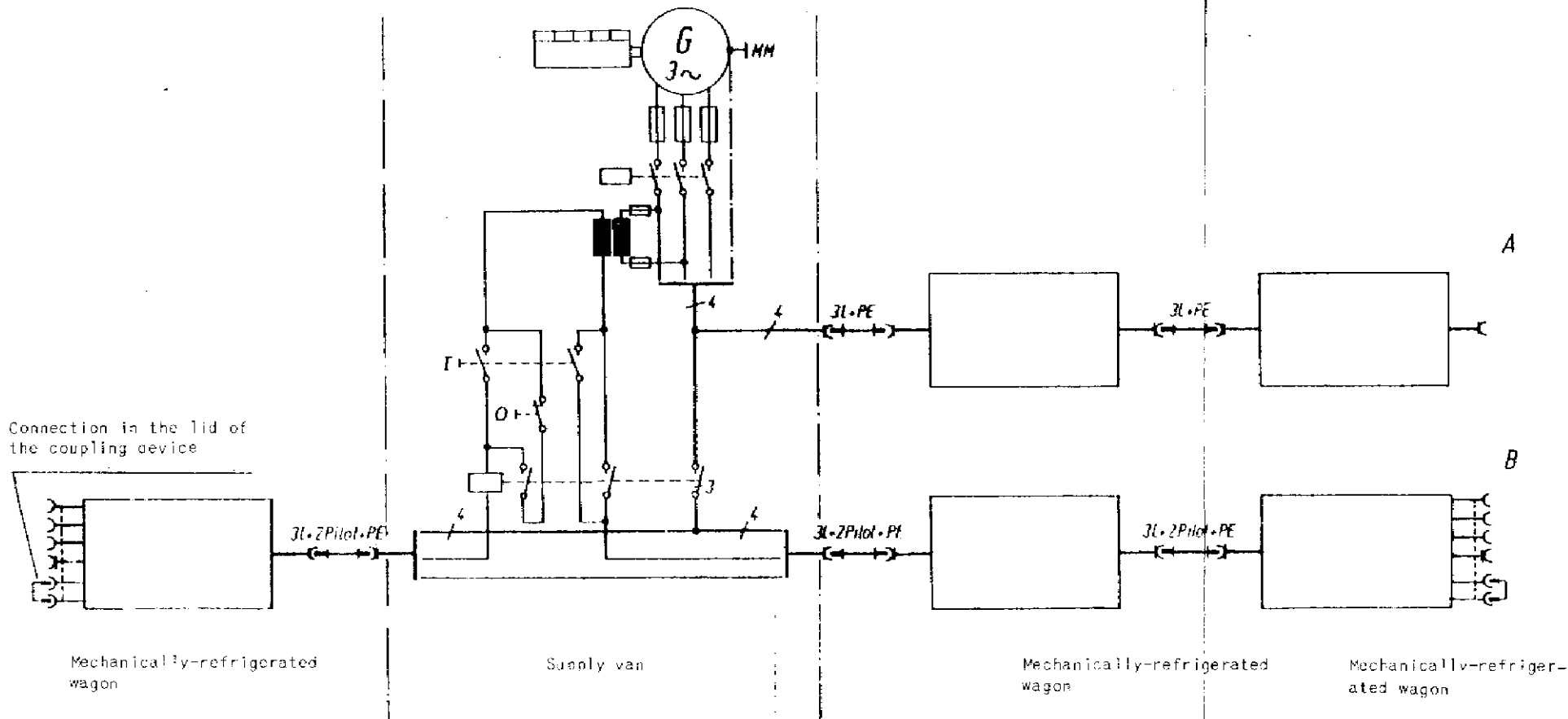
(1) OSJD : Organisation for the Collaboration of Railways, with Headquarters in Warsaw.

INSTALLATION LAY-OUT ON MECHANICALLY-REFRIGERATED WAGONS

554-2
OR
PLATE 1



POWER SUPPLY TO MECHANICALLY-REFRIGERATED WAGONS FORMING A RAFT WITH A COMMON POWER SUPPLY AT 380 V, 50 Hz



APPLICATION

With effect from 1 January 1978 as far as obligatory regulations are concerned (for new wagons).

All Railways in the Union.

RECORD REFERENCES

Heading under which the question has been dealt with :

- *Question 5/R/Pic* : Revision of Leaflets 550, 552 and 554.

(Traction and Rolling Stock Committee : Paris, June 1977).